

Accessories & Consumables

Catalogue 2018





To make our customers' work-life easier and more profitable



Essentia
Teamed
to serve
you.



Your satisfaction is our satisfaction. Anything you need is always available thanks to an extensive Customer Care global network of over **2,200** authorized service partners worldwide.



Make your work simple and your equipment last longer with **original Accessories & Consumables**.

To guarantee the best performance and boosting the highest profitability.



Accessories & Consumables

Contents



Modular cooking
page 5



Cook&Chill
page 41



Refrigeration
page 55



Dishwashing
page 69



Dynamic Preparation
page 107



Detergents
page 151



Laundry
page 163



Accessories & Consumables

Modular cooking

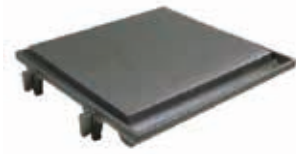
Index

Cookers and stoves - Gas range.....	6
Cookers and stoves - Electric range.....	12
Oven range	13
Induction range.....	14
Fry top.....	16
Grills	18
Fryers	21
Pasta cookers.....	28
Bain marie	33
Multifunctional range	34
Gastronorm containers and accessories.....	35
Speedelight accessories.....	38

Cookers and stoves - Gas range

Single burner smooth plate for steaks

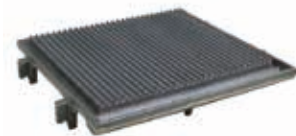
Fry top mode for gas burner and simple service;
use one on the 400 mm models, 2 on the 800 mm models and 3 on the 1200mm models;
Can be installed on frontal burners only



Code	WxDxH (mm)	Compatible with
0C4706	316x329x55	700XP; N700; EVO700; ELCO700

Single burner ribbed plate for steaks

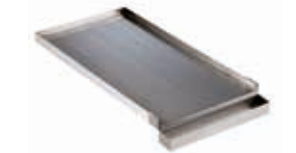
Fry top mode for gas burner and simple service;
use one on the 400 mm models, 2 on the 800 mm models and 3 on the 1200mm models;
Can be installed on frontal burners only



Code	WxDxH (mm)	Compatible with
0C4707	316x330x60	700XP; N700; EVO700; ELCO700

Double burner smooth plate for steaks

Fry top mode for gas burner and simple service;
equipped with a removable grease collector container



Code	WxDxH (mm)	Compatible with
0C6880	292,5x572,5x23	700XP; N700; PR700; B700; EVO700; ELCO700

Double burner ribbed plate for steaks

Fry top mode for gas burner and simple service;
equipped with a removable grease collector container



Code	WxDxH (mm)	Compatible with
0C6881	292,5x572,5x23	700XP; N700; PR700; B700; EVO700; ELCO700

Single burner radiant plate

solid top mode (suitable for indirect cooking with use of pots)

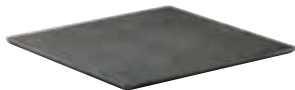


Code	WxDxH (mm)	Compatible with
0C4708	285x329x50	700XP; N700; EVO700; ELCO700

Cookers and stoves - Gas range

Single burner radiant plate

in cast iron; solid top mode (suitable for indirect cooking with use of pots)



Code	WxDxH (mm)	Compatible with
002009	350x350x30	900XP; HD900; N900; EVO900; ELCO900

Single burner ribbed plate

in cast iron; fry top mode for gas burners with grease collector



Code	WxDxH (mm)	Compatible with
055556	315x328x60	MD700; PR700

Single burner smooth plate

in cast iron; solid top mode (suitable for indirect cooking with use of pots)



Code	WxDxH (mm)	Compatible with
055550	315x328x60	MD700; PR700

Single burner ribbed plate

in cast iron; fry top mode for gas burners with grease collector



Code	WxDxH (mm)	Compatible with
002815	300x330x15	PR700

Single burner smooth plate

in cast iron; solid top mode (suitable for indirect cooking with use of pots)



Code	WxDxH (mm)	Compatible with
054838	300x260x20	PR700

Cookers and stoves - Gas range

Single burner ribbed plate

in cast iron for burners of 85 mm. diameter
fry top mode for gas burners with grease collector



Code	WxDxH (mm)	Compatible with
059273	345x395x55	HD900

Double burner ribbed plate

in cast iron for burners of 85 and 103 mm. diameter
fry top mode for gas burners with grease collector



Code	WxDxH (mm)	Compatible with
059274	395x695x55	HD900

Double burner smooth plate

in cast iron for burners of 85 and 103 mm. diameter
fry top mode for gas burners with grease collector



Code	WxDxH (mm)	Compatible with
026440	395x695x55	HD900

Single burner smooth plate

In cast iron for burners of 85 mm. diameter
solid top mode (suitable for indirect cooking with use of pots)



Code	WxDxH (mm)	Compatible with
054653	345x395x30	HD900

Single burner smooth plate for steaks

In cast iron; fry top mode for gas burners with grease collector

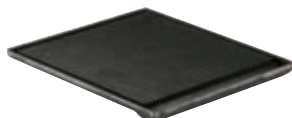


Code	WxDxH (mm)	Compatible with
002010	350x390x30	900XP; HD900; N900; EVO900; ELCO900

Cookers and stoves - Gas range

Single burner ribbed plate for steaks

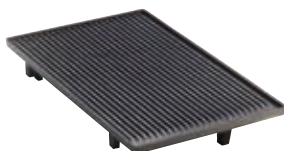
In cast iron; fry top mode for gas burners with grease collector



Code	WxDxH (mm)	Compatible with
002011	350x390x30	900XP; HD900; N900; EVO900; ELCO900

Double burner ribbed plate for steaks

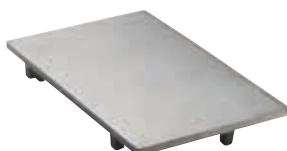
In cast iron; fry top mode for gas burners with grease collector



Code	WxDxH (mm)	Compatible with
0C6770	310x510x55	600

Double burner smooth plate

In cast iron; solid top mode (suitable for indirect cooking with use of pots)



Code	WxDxH (mm)	Compatible with
0C6771	310x510x55	600

Disk for cooking plate



Code	ØxH (mm)	Compatible with
026953	225x25	900XP; HD900; N900; EVO900; ELCO900
050803	197x18	700XP; MD700; N700; EVO700; ELCO700

Code	Description
001158	Rings hook

Wok support

in stainless steel for open burners;
diameter 260mm



Code	ØxH (mm)	Compatible with
0CA626	Ø260x47	700XP; 900XP; HD900; MD700; N700; N900; PR700; 600; B700; EVO700; ELCO700; EVO900; ELCO900

Cookers and stoves - Gas range

Single burner support grid for pans

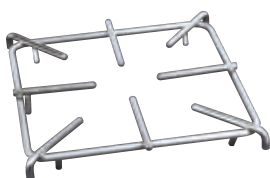
in cast iron



Code	WxDxH (mm)	Compatible with
0C1985	394x360x50	900XP; N900; EVO900; ELCO900

Single burner support grid for pans

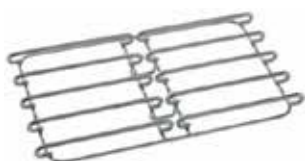
In stainless steel



Code	WxDxH (mm)	Compatible with
0C1278	398x370x35	900XP; N900; EVO900; ELCO900

Double burner support grid for pans

in stainless steel



Code	WxDxH (mm)	Compatible with
0C6298	331x760x93	900XP; N900*
0C0130	398x370x35	N900**

* from S/N beginning with 350...

** up to S/N beginning with 349...

Single burner support grid for pans

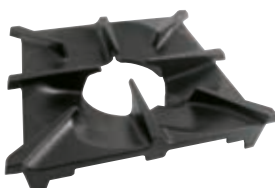
In cast iron



Code	WxDxH (mm)	Compatible with
0C0132	381x360x50	N900

Single burner support grid for pans

In cast iron



Code	WxDxH (mm)	Compatible with
002437	390x350x60	HD900

Cookers and stoves - Gas range

Single burner support grid for pans

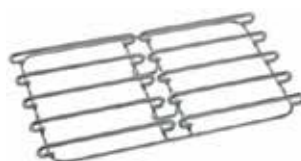
In cast iron grid with long spokes



Code	WxDxH (mm)	Compatible with
058179	395x345x37	HD900; P1000

Double burner support grid for pans

in stainless steel



Code	WxDxH (mm)	Compatible with
0S0869	335x594x75	700XP; N700; EVO700; ELCO700

Single burner support grid for pans

In cast iron



Code	WxDxH (mm)	Compatible with
0C2526	386x285x48	700XP; N700; EVO700; ELCO700

Single burner support grid for pans

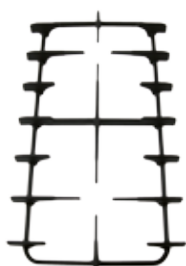
In cast iron



Code	WxDxH (mm)	Compatible with
002436	345x285x37	PR700

Double burner support grid for pans

In cast iron



Code	WxDxH (mm)	Compatible with
002446	340x600x40	PR700

Cookers and stoves - Gas range

Double burner support grid for pans

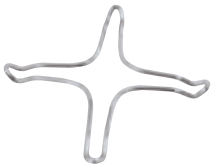
In cast iron



Code	WxDxH (mm)	Compatible with
004976	320x530x40	600

Reduction grid

in stainless steel



Code	Compatible with
025056	700XP; 900XP; MD700; N700; N900; EVO700, ELCO700, EVO900; ELCO900; PR700; B700; 600

Cookers and stoves - Electric range

Cast iron bars - 2pcs

to obtain wider flat cooking zone, fits for hot square plates only



Code	WxDxH (mm)	Compatible with
0CA622	270x115x25	700XP; N700; EVO700; ELCO700
002012	350x100x30	900XP; N900; EVO900; ELCO900

Oven range

Chromed grid for oven GN 2/1

with 2 stoppers on the short side



Code	WxDxH (mm)	Compatible with
025020	530x650x10	700XP; EVO700; ELCO700; 900XP; EVO900; ELCO900; HD900; MD700; N700; N900; PR700; 600

Chromed grid for ovens

For large oven, with two stoppers on the long side



Code	WxDxH (mm)	Compatible with
0C1722	972x687x70	900XP; N900

Chromed grid for ovens GN 2/1

with 2 stoppers on the long side



Code	WxDxH (mm)	Compatible with
0C7336	650x530x10	700XP; EVO700; 900XP; EVO900; HD900; MD700; N700; N900; PR700; 600

Induction range



Induction pan

In stainless steel; with handle in stainless steel;
diameter 200mm

Code	ØxH (mm)
0S2059	Ø200x350



Induction pan

In aluminium with handle in stainless steel;
diameter 240mm

Code	ØxH (mm)
0S2060	Ø240x400



Induction pan

In aluminium with handle in stainless steel;
diameter 280mm

Code	ØxH (mm)
0S2061	Ø280x450



Induction wok pan

In mild steel with handle in wood;
diameter 360mm

Code	ØxH (mm)
0T2024	Ø360x105



Induction wok pan

In stainless steel with handle in stainless steel;
diameter 360mm

Code	ØxH (mm)
0CA638	Ø360x100

Induction range



Lid for induction wok pan

In stainless steel diameter 360mm

Code	ØxH (mm)
0CA639	Ø360x40



Non-stick grilling plate - smooth

Universal frying pan with smooth plate suitable for induction cookers 260 x 330 cooking surface

Code	WxDxH (mm)
0S2063	465x275x50



Non-stick grilling plate - ribbed

Universal frying pan with ribbed plate suitable for induction cookers 260 x 330 cooking surface

Code	WxDxH (mm)
0S2064	465x275x50



Scraper for glass-ceramic plate

Code	WxDxH (mm)
0S1606	45x10x135



Blades for scraper 0S1606

Set of 5 pcs

Code	WxDxH (mm)
0S1071	42x1x22

Fry top

Scraper for smooth cooking plate



Code	WxDxH (mm)	Compatible with
055995	320x120x30	generic, for all smooth fry tops

Scraper for ribbed cooking plate

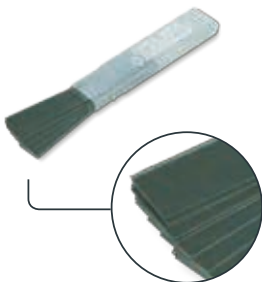
Scraper for ribbed plate fry top



Code	WxDxH (mm)	Compatible with
0CB172	200x80x60	generic, for all ribbed fry tops

Blades for scraper 055995

not recommended for chromed frytops;
set of 10 pcs



Code	Compatible with
0C2519	all smooth fry tops



Blades for scraper 055995 with rounded corners

used for chromed frytops;
set of 2 pcs

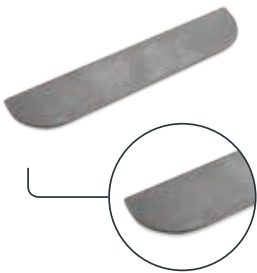


Code	Compatible with
0C6241	all smooth chromed fry tops

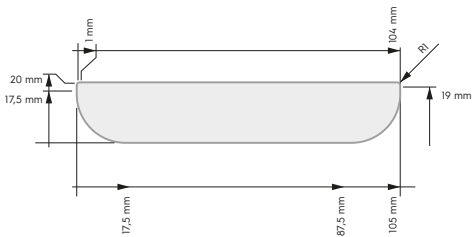


Blades for scraper 055995

with rounded corners used for braising pans;
1 pcs



Code	Compatible with
006469	all braising pans and multifunctional cookers



Fry Top



Stopper

In stainless steel for fry top with horizontal plate, used to keep the grease released by the food on the frame plate

Code	ØxH (mm)	Compatible with
0C6384	Ø46x50	900XP; N900; EVO900; ELCO900



C40 Degreaser for hot surfaces

Detergent active at high temperature for free cooking surfaces, fry tops and grills. Practical nozzle and spraying unit included.

Code	Packing
0S1841	1 pack of 6x1 liter bottle



Cleaner brush with handle for hot surfaces

to be used with temperature lower than 175 degrees

Code	Compatible with
0S1379	all fry tops

Non abrasive pads for brush 0S1379

to be used with temperature lower than 175 degrees

Code	Quantity
0S1380	set of 15 pieces

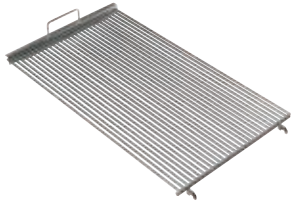


Squeegee with handle for hot surfaces

to be used with temperature lower than 175 degrees

Code	Compatible with
0S1377	all fry tops

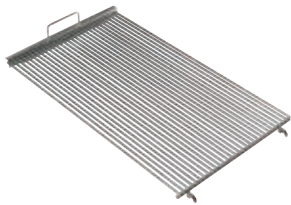
Grills



Grid for free standing gas grill

In AISI304 for appliance of width 400mm;
round grid shape; for 800mm models use 2 pcs

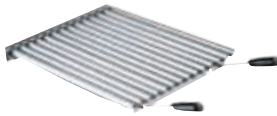
Code	WxDxH (mm)	Compatible with
0CA629	324x635x57,5	900XP; N900; EVO900; ELCO900



Grid for free standing gas grill

In stainless steel; round grid shape;
for appliance of width 400-800mm
(2 pcs required for the 800mm models)

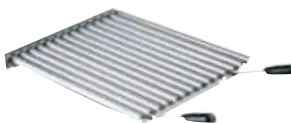
Code	WxDxH (mm)	Compatible with
0CA631	750x475x57,5	700XP; EVO700



Grill with drain channels for top and free standing grill

In stainless steel for appliance of width 400mm

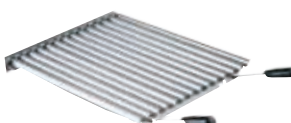
Code	WxDxH (mm)	Compatible with
0CA634	324x484,5x50	700XP; EVO700



Grill with drain channels for free standing grill

In stainless steel for appliance of width 800mm
(contains 2 pcs for covering the whole grill surface);
complete of scraper 0CA637

Code	WxDxH (mm)	Compatible with
0CA632	361x484,5x50	700XP; EVO700



Grill with drain channels for free standing grill

In stainless steel for appliance of width 400mm;
complete of scraper 0CA637

Code	WxDxH (mm)	Compatible with
0CA630	324x645,5x50	900XP; EVO900

Grills

Grill with drain channels for free standing grill - 2pcs

In stainless steel for appliance of width 800mm;
complete of scraper 0CA637



Code	WxDxH (mm)	Compatible with
0CA628	361x645,5x50	900XP; EVO900

Grill with drain channels for top grill

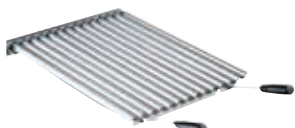
in stainless steel



Code	WxDxH (mm)	Compatible with
0C6878	335x533x50	700XP; N700; PR700; EVO700; ELCO700

Grill with drain channels for free standing grill

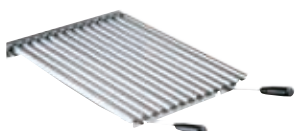
In stainless steel



Code	WxDxH (mm)	Compatible with
0C6876	363x656x50	N900; ELCO900

Grill with drain channels for free standing grill

In stainless steel



Code	WxDxH (mm)	Compatible with
0C6875	364x491x50	N700; ELCO700

Grill for top grill

in cast iron



Code	WxDxH (mm)	Compatible with
0C9059	337x529x50	N700; ELCO700

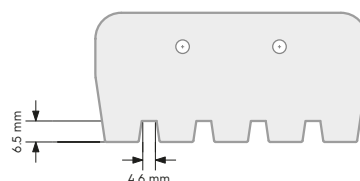
Accessories for grills

Scraper

for grill HP



Code	WxDxH (mm)	Compatible with
0C9150	84x454x62	700XP; 900XP; EVO700; EVO900; generic

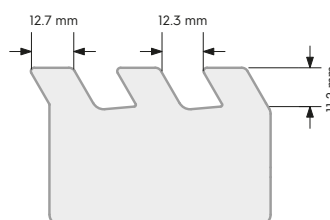


Scraper

for grill with drain channels - long handle



Code	WxDxH (mm)	Compatible with
0CA637	110x490x30	generic

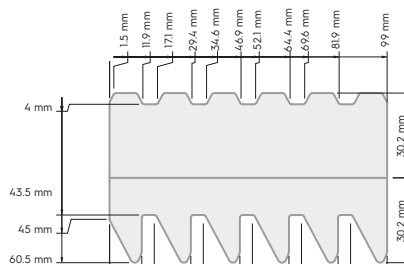


Scraper

for cast iron grills



Code	WxDxH (mm)	Compatible with
0C9974	110x490x30	generic

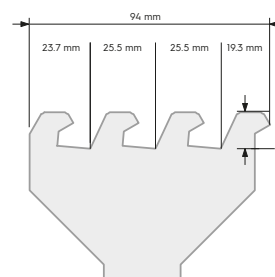


Scraper

for grill with drain channels - short handle



Code	WxDxH (mm)	Compatible with
005179	180x50x50	700XP; EVO700; ELCO700; N700; PR700



Lava rock for grills



Code	Package
050859	pack of 5 Kg

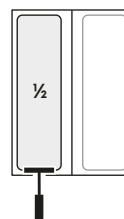
Fryers



Basket for fryer

Chromed;
Half size basket fits to 7lt appliances

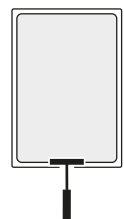
Code	WxDxH (mm)	Compatible with
054948	100x325x120	700XP; EVO700; ELCO700; MD700; N700; PR700



Basket for fryer

Chromed;
Full size basket fits to 7lt appliances

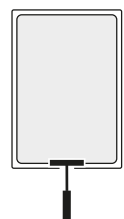
Code	WxDxH (mm)	Compatible with
004492	225x325x90	700XP; EVO700; ELCO700; MD700; N700; PR700



Basket for fryer

Chromed;
Full size basket fits to 12lt top appliances

Code	WxDxH (mm)	Compatible with
054960	225x325x125	700XP; EVO700; ELCO700; MD700; N700; PR700



Basket for fryer

Chromed;
Full size basket fits to 14-15lt appliances
and electric programmable fryer

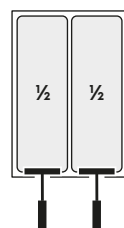
Code	WxDxH (mm)	Compatible with
005933	225x325x125	700XP; EVO700; ELCO700; 900XP; EVO900; ELCO900; HD900; N700; N900; PR700



Basket for fryer - 2pcs

Chromed; Half size baskets fits to 12lt free standing,
14-15lt appliances and electric programmable fryer

Code	WxDxH (mm)	Compatible with
005974	100x325x120	700XP; EVO700



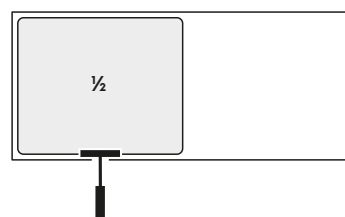
Fryers



Basket for fryer

Chromed;
Half size basket fits to 34lt and 40lt appliances

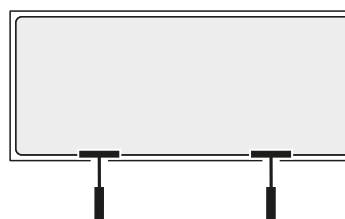
Code	WxDxH (mm)	Compatible with
004499	270x260x120	700XP; 900XP; EVO700; ELCO700; EVO900; ELCO900; HD900; MD700; N700; N900; PR700



Basket for fryer

Chromed;
Full size basket fits to 34lt and 40lt appliances

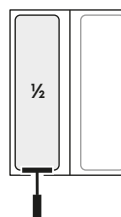
Code	WxDxH (mm)	Compatible with
005180	620x330x80	700XP; EVO700; ELCO700; N700; PR700;



Basket for fryer

Half size in stainless steel

Code	WxDxH (mm)	Compatible with
0HB228	340x130x140	HD900; N900; ELCO900



Basket for fryer

Full size in stainless steel

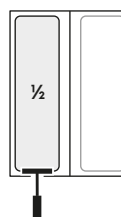
Code	WxDxH (mm)	Compatible with
0HB229	340x280x140	HD900; N900; ELCO900



Basket for fryer

Chromed;
Half size basket - fits to 20lt fryers

Code	WxDxH (mm)	Compatible with
059327	330x158x122	HD900; N900; ELCO900



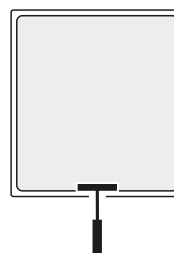
Fryers



Basket for fryer

Chromed;
Full size basket - fits to 20lt fryers

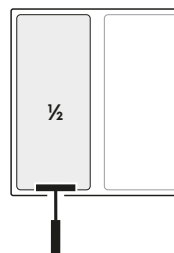
Code	WxDxH (mm)	Compatible with
059307	333x338x122	HD900; N900; ELCO900



Basket for fryer

Chromed half size basket for 20-23lt;

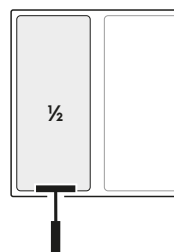
Code	WxDxH (mm)	Compatible with
0C9735	345x150x160	H900



Basket for fryer

Chromed half size basket fits to 18-23lt appliances
and electric programmable fryer

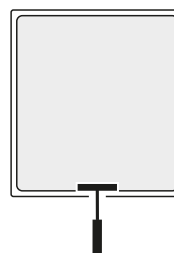
Code	WxDxH (mm)	Compatible with
006133	137x330x142	900XP; EVO900; ELCO900; HD900; N900



Basket for fryer

Chromed full size basket fits to 18-23lt appliances
and electric programmable fryer

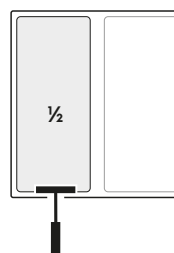
Code	WxDxH (mm)	Compatible with
006539	285x330x142	900XP; EVO900; ELCO900; HD900; N900



Basket for fryer

Chromed half size basket for 36lt freestanding fryers

Code	WxDxH (mm)	Compatible with
053206	134x260x120	MD700; PR700



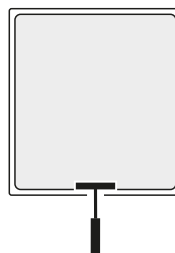
Fryers



Basket for fryer

Chromed full size basket for 36lt freestanding fryers

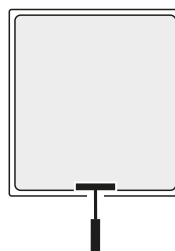
Code	WxDxH (mm)	Compatible with
052683	268x260x120	MD700; PR700



Basket for fryer

Chromed; fits to 7lt fryers

Code	WxDxH (mm)	Compatible with
005704	210x265x105	600



Grip for fryer basket

Code	Compatible with
0C3723	006133; 006539; 059307; 059327



Bottom grid

Code	WxDxH (mm)	Compatible with
005932	220x360x5	700XP; EVO700; ELCO700 MD700; N700



Bottom grid

Code	WxDxH (mm)	Compatible with
005965	230x330x5	700XP; EVO700; ELCO700; MD700; N700

Fryers

Bottom grid



Code	WxDxH (mm)	Compatible with
0C1743	388x320x5	900XP; EVO900; ELCO900; HD900; N900

Bottom grid



Code	WxDxH (mm)	Compatible with
006130	388x296x5	900XP; EVO900; ELCO900; HD900; N900

Sediment tray for 15lt fryer

For free standing v-shape fryers



Code	WxDxH (mm)	Compatible with
0CA776	58x368x114	700XP; 900XP; EVO700; EVO900; ELCO700; ELCO900; N700; N900; PR700

Sediment tray for 23lt fryer

For free standing v-shape fryers



Code	WxDxH (mm)	Compatible with
0CA777	61x384x126	900XP; N900; EVO900; ELCO900

Unclogging rod for 15lt fryer drain pipe

diameter 6mm



Code	WxDxH (mm)	Compatible with
0CA642	668x228x6	900XP; 700XP; EVO700; EVO900; ELCO700; ELCO900; HD900; N900; MD700 N700; PR700

Fryers



Unclogging rod for 23lt fryer drain pipe
diameter 6mm

Code	WxDxH (mm)	Compatible with
OCA643	781x125x6	900XP; 700XP; EVO700; EVO900; ELCO700; ELCO900; HD900; MD700; N700; N900; PR700



Oil filter

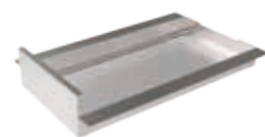
For free standing fryers in stainless steel frame and polyester net

Code	WxDxH (mm)	Compatible with
OCA775	170x485x125	900XP; N900; EVO900; ELCO900

Polyester net

For the filter OCA775

Code	Compatible with
006149	OCA775



Oil filter

For free standing fryers

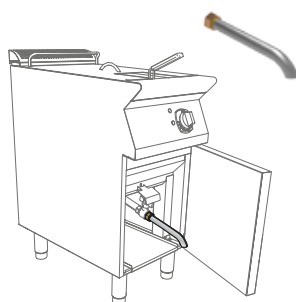
Code	WxDxH (mm)	Compatible with
0C9119	242x490x50	900XP; N900; EVO900; ELCO900



Oil filter

For free standing fryers

Code	WxDxH (mm)	Compatible with
0C9069	256x402x40	700XP; EVO700; ELCO700; N700; PR700



Extension for oil drainage

1" - 270mm long - Suitable for 23lt fryers

Code	WxDxH (mm)	Compatible with
0C7974	30x400x30	700XP; 900XP; EVO700; EVO900

Extension for oil drainage

3/4" - 185mm long - Suitable for 15lt fryers

Code	WxDxH (mm)	Compatible with
0C6282	40x185x40	700XP; 900XP; EVO700; EVO900

Fryers



Deflector

For floured products for freestanding V-shape fryers; the deflector is lying on the inclined part of the well, in order to avoid the bread or flour released by the products to lie there and get burned. Suitable for 15lt fryers

Code	WxDxH (mm)	Compatible with
0C1859	280x350x90	700XP; 900XP; EVO700; EVO900; ELCO900; ELCO700; N700; N900



Deflector

For floured products for freestanding V-shape fryers. the deflector is lying on the inclined part of the well, in order to avoid the bread or flour released by the products to lie there and get burned. Suitable for 23lt fryers

Code	WxDxH (mm)	Compatible with
0C3717	295x390x65	700XP; 900XP; EVO700; EVO900; ELCO900; N900



Hygienic lid for fryers

Suitable for 23lt fryers

Code	WxDxH (mm)	Compatible with
0CA623	550x375x1,5	900XP; N900; EVO900; ELCO900

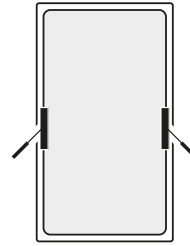
Pasta cookers



Basket for pasta cooker in stainless steel

Full size square basket with 2 side handles

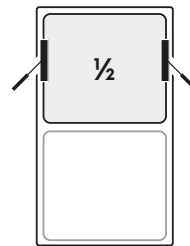
Code	WxDxH (mm)	Compatible with
004874	230x360x240	700XP; EVO700; ELCO700; N700; PR700



Basket for pasta cooker in stainless steel

Half size square basket with 2 side handles

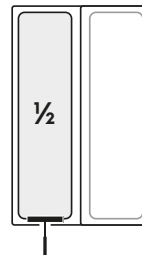
Code	WxDxH (mm)	Compatible with
004875	230x180x240	700XP; EVO700; ELCO700; N700; PR700



Basket for pasta cooker in stainless steel

Half size square basket with one handle on the frontal side

Code	WxDxH (mm)	Compatible with
004873	105x350x265	700XP; EVO700; ELCO700; N700; PR700

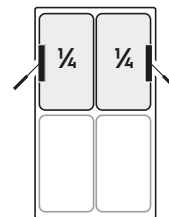


Basket for pasta cooker in stainless steel*

Set of 2 square basket 1/4 with handle: left + right

Code	WxDxH (mm)	Compatible with
0CB360	105x160x240	700XP; EVO700; ELCO700; N700; PR700

* Bottom grid code 0CB362

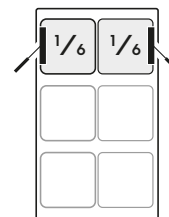


Basket for pasta cooker in stainless steel*

Set of 2 square 1/6 basket with handle: left + right

Code	WxDxH (mm)	Compatible with
0CB361	105x105x240	700XP; EVO700; ELCO700; N700; PR700

* Bottom grid code 0CB362



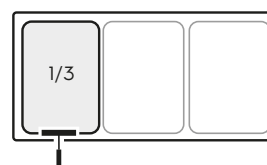
Pasta cookers



Basket for pasta cooker in stainless steel

Square basket 1/3 for "rapid system" pasta cookers

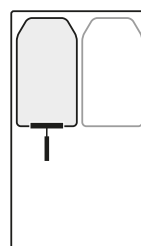
Code	WxDxH (mm)	Compatible with
056919	150x275x180	MD700; ELCO700; N700; PR700



Basket for pasta cooker in stainless steel

For automatic pasta cookers

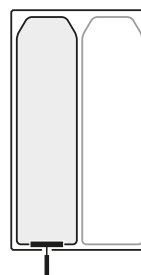
Code	WxDxH (mm)	Compatible with
006886	115x160x123	700XP; EVO700; ELCO700; N700



Basket for pasta cooker in stainless steel

For automatic pasta cookers

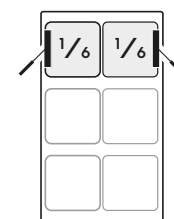
Code	WxDxH (mm)	Compatible with
0C9539	105x320x123	700XP; EVO700; ELCO700; N700



Basket for pasta cooker in stainless steel

Set of 2 square 1/6 basket with handle: left + right

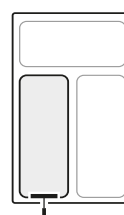
Code	WxDxH (mm)	Compatible with
0CA806	130x130x215	900XP; N900; EVO900; ELCO900



Basket for pasta cooker in stainless steel

Square basket with handle on the front side

Code	WxDxH (mm)	Compatible with
0C1901	135x310x215	900XP; N900; EVO900; ELCO900



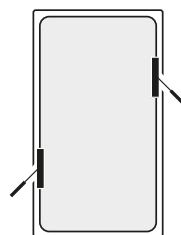
Pasta cookers



Basket for pasta cooker in stainless steel

Full size square basket 1/1

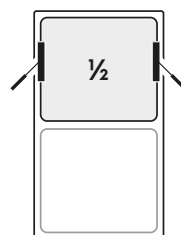
Code	WxDxH (mm)	Compatible with
0C1341	276x485x210	900XP; EVO900; ELCO900; HD900; N900; PR700



Basket for pasta cooker in stainless steel

Square basket 1/2

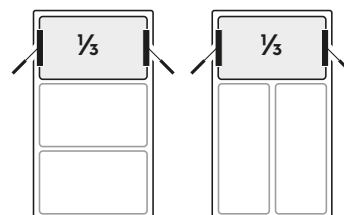
Code	WxDxH (mm)	Compatible with
0C1339	275x230x210	900XP; EVO900; ELCO900; HD900; N900; PR700



Basket for pasta cooker in stainless steel

Square basket 1/3

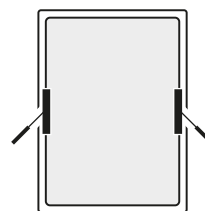
Code	WxDxH (mm)	Compatible with
0C1340	275x150x210	900XP; EVO900; ELCO900; HD900; N900; PR700



Basket for pasta cooker in stainless steel

Square basket

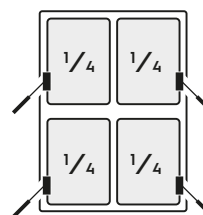
Code	WxDxH (mm)	Compatible with
005809	290x290x200	600



Basket for pasta cooker in stainless steel

Square baskets 1/4 - set of 4pcs

Code	WxDxH (mm)	Compatible with
0C6291	140x140x200	600



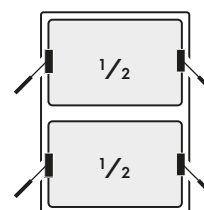
Pasta cookers



Basket for pasta cooker in stainless steel

Square baskets 1/2 - set of 2 pcs

Code	WxDxH (mm)	Compatible with
0C6290	145x290x200	600



Grip for handle

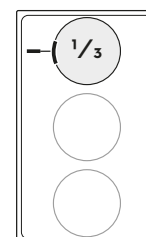
Code	Dimensions (mm)
057728	Ø 28,5 x 90mm, M8 thread connection



Basket for pasta cooker in stainless steel

Round basket 1/3 diam. 170mm

Code	Ø x H (mm)	Compatible with
056917	170x180	900XP; EVO900; ELCO900; EVO700; ELCO700; HD900; MD700; N700; N900 PR700



Grip for handle

Code	Dimensions (mm)
0C1338	L = 125mm

Athermal handle kit

in polyamide 66 (30%) black - knob with insert

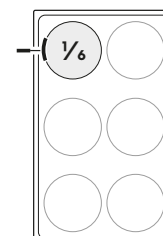
Code	WxDxH (mm)
0CA751	132x37x17



Basket for pasta cooker in stainless steel

Round basket 1/6 diam. 135mm

Code	Ø x H (mm)	Compatible with
056918	135x180	900XP; EVO900; ELCO900; EVO700; ELCO700; HD900; MD700; N700; N900 PR700



Grip for handle

Code	Dimensions (mm)
0C1338	L = 125mm

Athermal handle kit

in polyamide 66 (30%) black - knob with insert

Code	WxDxH (mm)
0CA751	132x37x17

Pasta cookers



Support frame

To hold 6 round baskets code 056918;
to be used to fix the position of the basket during the cooking

Code	WxDxH (mm)	Compatible with
0C6831	330x535x10	900XP; N900; EVO900; ELCO900



Bottom grid

Support for pasta cooker baskets for automatic pasta cookers

Code	WxDxH (mm)	Compatible with
0CA625	230x350x147	700XP; EVO700; ELCO700; N700; PR700



Bottom grid

Support for pasta cooker baskets

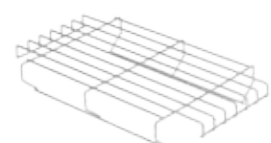
Code	WxDxH (mm)	Compatible with
0CB362	230x350x60	700XP; EVO700; ELCO700; N700; PR700



Bottom grid

Support for pasta cooker baskets

Code	WxDxH (mm)	Compatible with
056922	290x500x115	900XP; EVO900; ELCO900; HD900; N900; PR700



Bottom grid

Support for pasta cooker baskets

Code	WxDxH (mm)	Compatible with
0C1902	290x500x80	900XP; EVO900; ELCO900; N900

Pasta cookers

Lid for pasta cookers

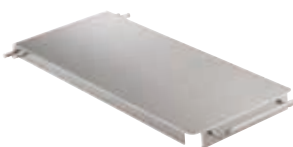
For 700 series



Code	WxDxH (mm)	Compatible with
OCA788	250x450x50	700XP; EVO700; ELCO700; N700; PR700

Lid and lid holder for pasta cookers

For 900 series



Code	WxDxH (mm)	Compatible with
OCA789	300x700x100	900XP; EVO900; ELCO900; N900

Bain marie

Drilled false bottom

For bain maries of width 400mm - all range



Code	WxDxH (mm)	Compatible with
004852	280x500x20	all range

Drilled false bottom

For bain maries of width 800mm - all range



Code	WxDxH (mm)	Compatible with
004858	490x600x20	all range

Multifunctional range

Lid

In stainless steel for multifunctional cookers of width 400mm



Code	WxDxH (mm)	Compatible with
OCA640	350x550x20	700XP; 900XP; EVO900; ELCO900; EVO700; ELCO700; HD900; MD700; N700; N900; PR700; 600

Lid

In stainless steel for multifunctional cookers of width 800mm



Code	WxDxH (mm)	Compatible with
OCA641	700x550x 20	700XP; 900XP; EVO900; ELCO900; EVO700; ELCO700; HD900; MD700; N700; N900; PR700; 600

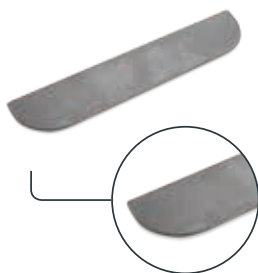
Scraper for smooth cooking plate



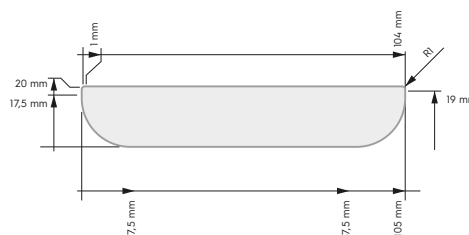
Code	WxDxH (mm)	Compatible with
055995	320x120x30	700XP; 900XP; EVO900; ELCO900; EVO700; ELCO700; HD900; MD700; N700; N900; PR700; 600; B700

Blades for scraper 055995

with rounded corners used for brasing pans;
1 pcs



Code	Compatible with
006469	700XP; 900XP; EVO900; ELCO900; EVO700; ELCO700; HD900; MD700; N700; N900; PR700; 600



Gastronorm containers

Gastronorm container GN 2/1



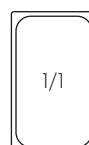
Code	WxD (mm)	Height (mm)
OS1964	650x530	20
OS1965	650x530	40
OS1966	650x530	65



Gastronorm container GN 1/1



Code	WxD (mm)	Height (mm)
OS1967	530x325	20
OS1048	530x325	40
OS1968	530x325	65
OS1733	530x325	100
OS1455	530x325	150



Gastronorm container GN 1/2



Code	WxD (mm)	Height (mm)
OS0900	325x265	65
OS2167	325x265	100
OS2168	325x265	150



Gastronorm container GN 1/3



Code	WxD (mm)	Height (mm)
OS2195	325x175	65
OS2196	325x175	100
OS2107	325x175	150



Gastronorm container GN 1/4



Code	WxD (mm)	Height (mm)
OS2197	265x162	100
OS2198	265x162	150



Gastronorm containers



Gastronorm container GN 1/6

Code	WxD (mm)	Height (mm)
0S2199	176x162	100
0S2200	176x162	150



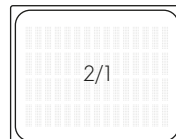
Gastronorm container GN 1/9

Code	WxD (mm)	Height (mm)
0S2066	176x108	65
0S2067	176x108	100



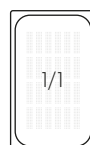
Perforated Gastronorm container GN 2/1

Code	WxD (mm)	Height (mm)
0S1969	650x530	20
0S1970	650x530	40
0S1232	650x530	65



Perforated Gastronorm container GN 1/1

Code	WxD (mm)	Height (mm)
0S1971	530x325	20
0S1972	530x325	40
0S0899	530x325	65
0S2201	530x325	100



Containers accessories

Lids for Gastronorm containers



Code	GN size
0S1916	Lid GN 1/1
0PR975	Lid GN 1/2
0S2106	Lid GN 1/3
0S1917	Lid GN 1/4
0S2202	Lid GN 1/6
0S2068	Lid GN 1/9

Supports for Gastronorm containers



Code	GN size	WxDxH (mm)
088951	GN 1/1	528x20x30
0A8155	GN 1/2	328x22x15

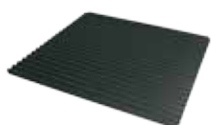
SpeedDelight accessories



Food-grade non-stick paper for SpeedDelight

Keeps the plate clean by removing food residues and fats

Code	Dimensions (mm)	Package
0S2225	215x400	Pack of 24 sheet



Teflon coated corrugated aluminum plate

Suitable for machines arranged for the insertion of the removable teflon plate

Code	WxDxH (mm)
0C9500	213x203x4



Silicone plate spatula

Versatile for multiple uses

Code
0D4063



Plate cleaning brush

Suitable for high temperatures, removes solid residues and crumbs

Code
0D7015



Scraper for glass ceramic hobs

Code	WxDxH (mm)
0S1606	50x160x25

Code	Description	Package
0S1071	S/steel blades for scraper 0S1606	Set of 5 pcs



C41 RAPID GREASE for Speedelight

for cleaning of Speedelight
hot plates (max 175°C).
Practical nozzle and spraying unit included.

1 pack of six 1l bottles
(Sprayer 0S2331 included)

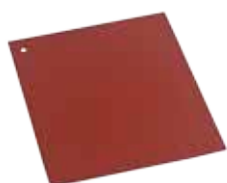
Code	Package
0S2292	1 pack of six 1l bottles



Sprayer

for C41 RAPID GREASE with extension

Code	Description
0S2331	Sprayer for C41 RAPID GREASE with extension



Silicone protective mat

for glass ceramic plate Suitable for protecting the
glass when cleaning the top plate
(to be used only during servicing)

Code	WxDxH (mm)
0D4024	240x240x5



Accessories & Consumables

Cook&Chill

Index

GN grids and trays	42
Grids and trays for bakery rack	45
Grids and trays for convection ovens.....	46
Generic trays in stainless steel	48
Filters	48
Sous-vide cooking	49
Smokers.....	50
Cleaning system	51
Water treatment	52
Thermal blanket for racks	53

GN grids and trays



Aluminium alloy trays with non-stick coating

- ▶ Reduces cooking time up to 10% and energy consumption up to 8%
- ▶ reduces food weight loss by 2% - 4% in comparison with traditional trays
- ▶ improve operations

Code	GN Size	WxDxH (mm)
0S1875	GN 1/2	325x265x20
0S1876	GN 1/2	325x265x40
0S1877	GN 1/2	325x265x60

⚠ Warning

- ▶ Recommended to use plastic spatulas in order to extend special coating life
- ▶ Recommended not to clean with granule-type dishwashers

Code	GN Size	WxDxH (mm)
0S1872	GN 1/1	530x325x20
0S1873	GN 1/1	530x325x40
0S1874	GN 1/1	530x325x60



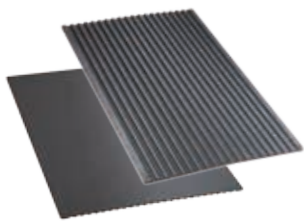
Aluminium grill with non-stick coating

Ideal for marking steaks improving operations (no pre-heating needed)

Code	GN Size	WxDxH (mm)
0S1878	GN 1/1	530x325x12

⚠ Warning

- ▶ Recommended to use plastic spatulas in order to extend special coating life
- ▶ Recommended not to clean with granule-type dishwashers



Non-stick frying plate

in aluminum alloy with non-stick coating.

For various cooking needs: **double faced plate** features ribbed side for grilling and marking, flat side for baking and toasting

Code	GN Size	WxDxH (mm)
0S1894	GN 1/1	530x325x5

⚠ Warning

- ▶ Recommended to use plastic spatulas in order to extend special coating life
- ▶ Recommended not to clean with granule-type dishwashers



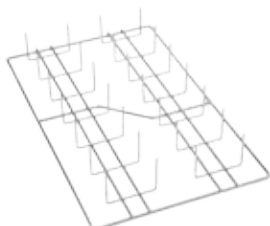
Non-stick egg fryer

Tray for 8 eggs in aluminum alloy with non-stick coating for automatic egg cooking process; may be used for pancakes, hamburgers, omelette, quiches and other round shaped food.

Code	GN Size	WxDxH (mm)
0C8526	GN 1/1	530x325x12

⚠ Warning

- ▶ Recommended to use plastic spatulas in order to extend special coating life
- ▶ Recommended not to clean with granule-type dishwashers



Potato baker

in AISI 304 for 28 potatoes

Code	GN Size	WxDxH (mm)
0S1992	GN 1/1	530x325x85

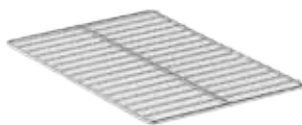
GN grids and trays



Non-stick baguette tray GN 1/1

perforated aluminium, silicon coating, ideal for baking baguettes (enables fitting 4 pieces, 290g each)

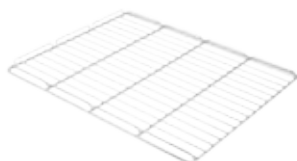
Code	GN Size	WxDxH (mm)
0C8525	GN 1/1	530x325x14



Oven grids in stainless steel AISI 304

for roasting large pieces, as support for irregular containers and plates to be regenerated

Code	GN Size	WxDxH (mm)
0S0868	GN 1/1	530x325x12



Inox oven grid in AISI 304

with stoppers on 3 sides: 2 on the long sides and 1 on one short side; suitable for length wise ovens

Code	GN Size	WxDxH (mm)
003189	GN 2/1	530x650x12



Frying basket, set of 2 pieces

Frying basket in AISI 304; ideal for air frying frozen pre-fried finger food (French fries, chicken nuggets, crab sticks...)

Code	GN Size	WxDxH (mm)
0C6037	GN 1/1	530x325x40



Chicken grids

in AISI 304, ideal for obtaining perfect browning and juicy cooking results thanks to the distribution of the chickens on the grid. 4 or 8 chickens per grid.

Code	GN Size	WxDxH (mm)
0C7013	GN 1/2	265x325x140

Chicken load: 4 chicken by grid

Code	GN Size	WxDxH (mm)
0S0869	GN 1/1	530x325x140

Chicken load: 8 chicken by grid

GN grids and trays



Grease drip trays in AISI 304

In stainless steel AISI 304; ideal for an easy fat collection and drain all thanks to the integrated stainless steel drain. Includes tray with integrated drain and lid

Code	GN Size	WxDxH (mm)
0S1752	GN 1/1	530x325x40

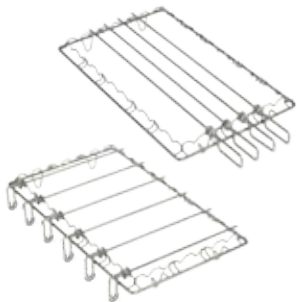
Code	GN Size	WxDxH (mm)
0S1993	GN 1/1	530x325x100



Aluminium baking tray with 2 edges GN 1/1

for bakery

Code	GN Size	WxDxH (mm)
0C8634	GN 1/1	530x325x10



Universal skewer rack with skewers

in AISI 304, Ideal for preparing all type of kebab, tandoor grill, churrasco, yakitori and any other kind of cooking using skewers

Code	GN Size	WxDxH (mm)	Skewers
0S1747	GN 1/1	530x325x55	4 long

Code	GN Size	WxDxH (mm)	Skewers
0S1748	GN 1/1	530x325x55	6 short



Long skewers

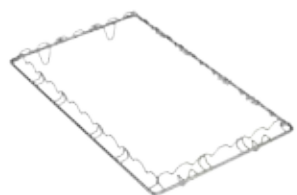
set of 4 pieces

Code	GN Size	WxDxH (mm)
0S1750	GN 1/1	240x615x10

Short skewers

set of 6 pieces

Code	GN Size	WxDxH (mm)
0S1751	GN 1/1	240x355x10



Universal skewer rack

Code	GN Size	WxDxH (mm)
0S1749	GN 1/1	530x325x55

Grids and trays for bakery rack



Oven grid

in AISI 304, used as support for containers and pans without removing the bakery rack

Code	WxDxH (mm)
0S1754	600x400x12



Baguette tray

in perforated aluminum, silicon coated, ideal for baking baguettes (enables fitting 5 pieces, max. 600 mm long)

Code	WxDxH (mm)
0S0587	600x400x38



Perforated bakery/pastry tray

in aluminum, Ideal for baking light pastry (ex. bigné)

Code	WxDxH (mm)
0S0588	600x400x20



Smooth bakery/pastry tray

in aluminium, ideal fo baking breads and pastry

Code	WxDxH (mm)
0S0936	600x400x20

Grids and trays for convection ovens

Grid for FCF 2 ovens



Code	WxDxH (mm)
054846	354x325x20

Pan GN 2/3 for FCF2 ovens

in AISI 304, flat edges, capacity 2l / 4l



Code	GN Size	WxDxH (mm)	Capacity (l)
0S0901	GN 2/3	354x325x20	2
0S0926	GN 2/3	354x325x40	4

Enamelled pan GN 2/3 for FCF2 ovens

Code	GN Size	WxDxH (mm)	Capacity (l)
054845	GN 2/3	354x325x25	2

Inox oven grid in AISI 304

with 3 stoppers: 2 on the short sides and 1 on one long side



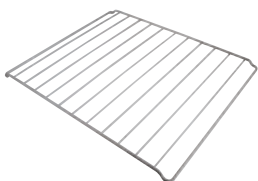
Code	GN Size	WxDxH (mm)
055428	GN 1/1	325x530x40

Enamelled Backing tray for FCF4 ovens



Code	WxDxH (mm)
0C3029	422x370x20
0C3028	422x370x33

Oven grid in stainless steel for FCF4 ovens



Code	WxDxH (mm)
0C3030	370x422x8

Chromed grid for FCF4 ovens

Code	WxDxH (mm)
054297	422x370x20

Grids and trays for convection ovens

Oven pan in stainless steel

For 3 GN 1/2 combi ovens



Code	GN Size	WxDxH (mm)
0KB698	GN 1/2	325x265x40

Perforated baking tray

For 3 GN 1/2 combi ovens



Code	GN Size	WxDxH (mm)
0KI553	GN 1/2	325x265x40

Smooth baking tray

for 3GN 1/2 combi ovens



Code	GN Size	WxDxH (mm)
0KI275	GN 1/2	325x265x5

Wire grid

in stainless steel AISI 304 for 3 GN 1/2 combi ovens



Code	GN Size	WxDxH (mm)
0KD893	GN 1/2	325x265x5

Generic trays in stainless steel

Smooth trays



Code	GN Size	WxDxH (mm)
0S1967	GN 1/1	530x325x20
0S1048	GN 1/1	530x325x40
0S1968	GN 1/1	530x325x65

Code	GN Size	WxDxH (mm)
0S1872	GN 2/1	530x650x20
0S1873	GN 2/1	530x650x40
0S1874	GN 2/1	530x650x65

Perforated trays



Code	GN Size	WxDxH (mm)
0S1971	GN 1/1	530x325x20
0S1972	GN 1/1	530x325x40
0S0899	GN 1/1	530x325x65

Code	GN Size	WxDxH (mm)
0S1969	GN 2/1	530x650x20
0S1970	GN 2/1	530x650x40
0S1232	GN 2/1	530x650x65

Filters



Fat filters

Recommended for greasy cooking to facilitate cleaning operations.
Can be washed in the dishwasher

Code	Oven Size	WxDxH (mm)
006310	6 GN 1/1	450x360x30



Fat filters

Recommended for greasy cooking to facilitate cleaning operations. Can be washed in the dishwasher

Code	Oven Size	WxDxH (mm)
005918	10 GN 1/1 - 10 GN 2/1 20 GN 1/1 - 20 GN 2/1	620x490x100

► Note: for 20 GN ovens use 2 pieces



Fat filters

Recommended for greasy cooking to facilitate cleaning operations.
Can be washed in the dishwasher. Fits to cross wise ovens only!

Code	Oven Size	WxDxH (mm)
003774	10 GN 1/1 - 10 GN 2/1 crosswise	580x450x80
056044	20 GN 1/1	483x598x51
056045	20 GN 2/1	678x598x51

► Note: for 20 GN ovens use 2 pieces

Sous-vide cooking



USB Sous-vide probe

Ideal for sous-vide cooking to ensure that the correct core temperature is accurately reached without affecting the vacuum in the bag.
1 mm in diameter, 60 mm in length, with a special diagonal-cut needle point design to avoid breaking the vacuum seal when inserted.
Only for air-o-steam Touchline and air-o-convect Touchline

Code	GN Size	WxDxH (mm)
0C8514	all	160x170x90

Adhesive strip for cooking probe



Code	Quantity	WxDxH (mm)
0S1827	set of 57 pieces	30 x 50 x 12

Vacuum bags

For temperatures from 0 to 115 Celsius degrees. Thickness 85 micron.



Code	Quantity	Size (mm)
0S1532	100 pieces	150x300
0S1523	100 pieces	200x300
0S1524	100 pieces	250x400

Code	Quantity	Size (mm)
0S1525	100 pieces	300x450
0S1526	100 pieces	400x500
0S1527	100 pieces	400x600

Probe for ovens

Used for Convection cross wise ovens



Code	Description	Dimensions (mm)
0S0668	Probe for ovens 6-10 GN 1/1	675x Ø 4
0TTH54	Probe for ovens 10 GN 2/1	1300x Ø 4
0TTAV7	Probe for ovens 20 GN 1/1-2/1	1122x Ø 4

Smokers



Volcano smoker

in AISI 304. For Cooking and smoking of fish, pork, poultry, beef, cheese, bread, vegetables (using wood chips, dried spices).

Low temperature cooking with smoked flavour. the quantity of smoke produced can be adjusted (registered design @ EPO)

Code	Oven compatibility	WxDxH (mm)
0S1753	all	220x220x85



Coal for Volcano Smoker

- ▶ Wood Charcoal, Cuban Marabú type, with cornstarch used as binder
- ▶ smooth burn, free of crackle and sparks
- ▶ combustion duration 4-5 hours
- ▶ recommended for 15 loads

Code	Description	Weight
0S2159	Coal briquets for smoker	3 Kg



Wood chips to use with Volcano smoker - for food use

Oak: good on ribs, red meat, pork, fish and heavy game

Hickory: sweet to strong, heavy bacon flavour. Good with pork, ham and beef.

Maple: smoky, mellow and slightly sweet. Good with pork, poultry, cheese, and small game birds.

Cherry: good with poultry, pork and beef.



Code	Description	Weight
0S1714	Oak flavour	450 g
0S1716	Maple flavour	450 g

Code	Description	Weight
0S1715	Hickory flavour	450 g
0S1717	Cherry flavour	450 g



Blow torch

Code	Description
0S1919	Blow torch



**Experience
how it works
with the smoky touch**
watch our video

Cleaning system



C20 Extra Strong Detergent for ovens

Cleaning detergent for ovens with automatic washing system. Pack of 2 x 5 liter can.

Code	Package
0S2282	one pack of 2 cans of 5 lt.



C21 Extra Strong Rinse aid for ovens

Rinse aid for ovens with automatic washing system. Pack of 2 x 5 liter can.

Code	Package
0S2283	one pack of 2 cans of 5 lt.



Retractable external spray unit

with retractable hose mounts on the bottom, external part of the oven, includes support for mounting to the oven

Code	Oven Size	WxDxH (mm)
006696	all range	300x250x120



External spray unit

Includes a support to be mounted on the external side panel of the oven

Code	Oven Size	Length (mm)
0S0662	all	2000



External spray unit

with hook on the handle

Code	Oven Size	Length (mm)
0S0354	all	2000

Water treatment



Purity QUELL filter kit with flowmeter

Kit with flow meter. Recommended for 6 GN 1/1 and 10 GN 1/1 ovens with low use of steam.

Code	Description	Steam use
0S1630	Purity C500 Quell; recommended for 6 GN 1/1 - 10 GN 1/1	low
0S1631	Purity C1100 Quell; recommended for 10 GN 1/1	medium

Code	Description
0S1056	Refill cartridge for Purity C500 QUELL
0S1708	Refill cartridge for Purity C1100 QUELL



Filter Purity STEAM with MDU

Code	Description	Steam use
0S1632	Purity STEAM 450; recommended for all range	low
0S1633	Purity STEAM 600; recommended for all range	medium
0S1634	Purity STEAM 1200; recommended for all range	high

Code	Description
0S1635	Refill cartridge for Purity STEAM 450
0S1636	Refill cartridge for Purity STEAM 600
0S1637	Refill cartridge for Purity STEAM 1200



Automatic water softener for ovens

water softener for high concentration of calcium

Code	Oven size	Electrical connection	Power (kW)	WxDxH (mm)
002454	all models and size	220/230V 1N 50/60 Hz	0,04	250x480x540



Resin sanitizer

for water softener

Code	WxDxH (mm)
002453	280x160x80

Cationic Resin

suitable for all softeners with use of resin, of any capacity



Code	Description
0S2191	5 Kg package (lt 6,14)
0S2192	10 Kg package (lt 12,28)
0S0333	25 Kg package (lt 30,71)

Thermal blanket for racks



Thermal blanket for racks

Ideal for keeping food warm up to 30 minutes.
Enables easy folding with straps. Washable: ETL Sanitation approved

Code	Oven size	WxDxH (mm)
OS1994	10 GN 1/1	390x660x720



Thermal blanket for racks

Ideal for keeping food warm up to 30 minutes.
Enables easy folding with straps. Washable: ETL Sanitation approved

Code	Oven size	WxDxH (mm)
OS1995	10 GN 2/1	2225x2165x720



Thermal blanket for racks

Ideal for keeping food warm up to 30 minutes.
Enables easy folding with straps. Washable: ETL Sanitation approved

Code	Oven size	WxDxH (mm)
OS1996	20 GN 1/1	385x660x1560



Thermal blanket for racks

Ideal for keeping food warm up to 30 minutes.
Enables easy folding with straps. Washable: ETL Sanitation approved

Code	Oven size	WxDxH (mm)
OS1997	20 GN 2/1	625x785x1550



Accessories & Consumables

Refrigeration

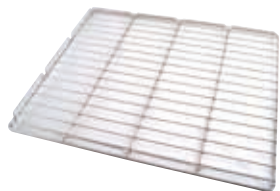
Index

Grids	56
Containers	63
Baskets	65
Runners	66

Grids

Grid in AISI 304 GN 2/1

with 2 stoppers on the long sides and 1 on the short one



Code	WxDxH (mm)	Height (mm)
003189	530x650x25	25

Grid in AISI 304 GN 1/1

with 2 stoppers on the short sides and 1 on the long one



Code	WxDxH (mm)	Height (mm)
055428	530x325x30	30

Chromed grid

with 2 stoppers on one side. For slim models



Code	WxDxH (mm)	Height (mm)
082307	530x530x40	40

Rilsan grid for refrigerated tables GN 1/1

with 1 stopper on the short side



Code	WxDxH (mm)	Height (mm)
082729	325x530x20	20

White rilsan grid GN 2/1

with 2 stoppers on the short side



Code	WxDxH (mm)	Height (mm)
082885	530x650x20	20

Grids

White rilsan grid for refrigerated tables

with 2 stopper on one side and 2 non-liftout device



Code	WxDxH (mm)	Height (mm)
082904	530x530x20	20

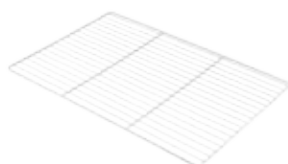
Grid in AISI 304 GN 2/1

with 2 stopper on one side and 2 non-liftout device



Code	WxDxH (mm)	Height (mm)
083035	530x650x40	40

White rilsan grid



Code	WxDxH (mm)	Height (mm)
083595	400x600x6	6

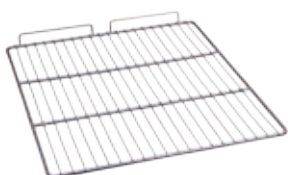
Grey rilsan grid GN 1/1



Code	WxDxH (mm)	Height (mm)
083615	325x530x25	25

Grey rilsan grid GN 2/1

with 2 stoppers on the short side

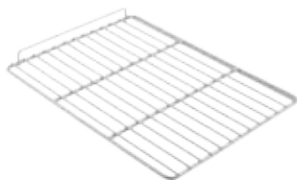


Code	WxDxH (mm)	Height (mm)
083635	530x650x40	40

Grids

Grey rilsan grid

with 1 stopper on the short side



Code	WxDxH (mm)	Height (mm)
083734	400x530x20	20

Grey rilsan grid GN 2/1

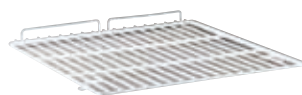
with 2 stoppers on the 2 long sides



Code	WxDxH (mm)	Height (mm)
083785	530x650x40	40

Grey rilsan grid

with 2 stoppers on one side



Code	WxDxH (mm)	Height (mm)
083911	530x530x60	60

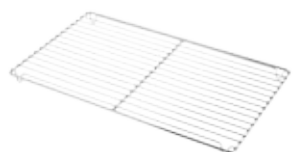
Meat rail with 4 hooks



Code	WxDxH (mm)	Height (mm)
087222	530x650x40	40

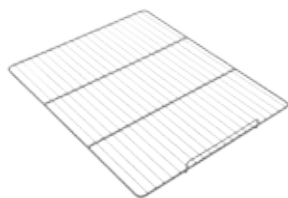
Grid in AISI 304 GN1/1

with 4 U-feet



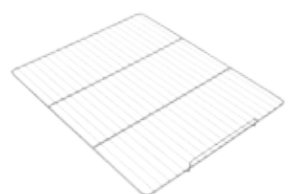
Code	WxDxH (mm)	Height (mm)
091169	325x530x25	25

Grids



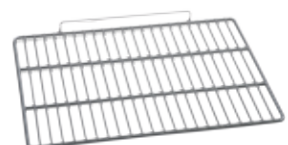
Grey rilsan grid GN 2/1
with 1 stopper on the short side

Code	WxDxH (mm)	Height (mm)
093252	530x650x40	40



Grid in AISI 304 GN 2/1
with 1 stopper on the short side

Code	WxDxH (mm)	Height (mm)
093360	530x650x40	40



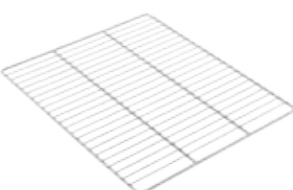
Grid Rilsan grid
with 1 stopper on the long side

Code	WxDxH (mm)	Height (mm)
094105	530x700x40	40



Grey rilsan grid for 400l wine refrigerators
with 1 stopper on the long side

Code	WxDxH (mm)	Height (mm)
099619	430x600x35	35



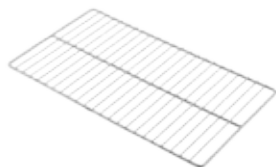
Grey rilsan grid
for 160lt fs refrigerator - cell

Code	WxDxH (mm)	Height (mm)
099875	480x410x6	6

Grids

Grey rilsan grid

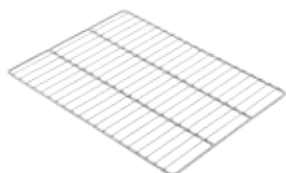
for 160lt fs refrigerator - bottom



Code	WxDxH (mm)	Height (mm)
099876	475x275x8,5	8,5

Grey rilsan grid

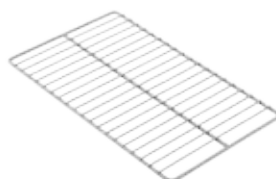
for 160lt fs refrigerator - cell



Code	WxDxH (mm)	Height (mm)
099879	424x320x6,5	6,5

Grey rilsan grid

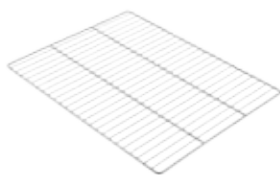
for 160lt fs refrigerator - bottom



Code	WxDxH (mm)	Height (mm)
099880	415x250x6	6

Grey rilsan grid

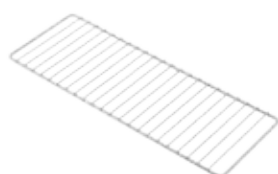
For 160lt undercounter refrigerator - cell



Code	WxDxH (mm)	Height (mm)
091147	530x410x8,5	8,5

Grey rilsan grid

For 160lt undercounter refrigerator - bottom



Code	WxDxH (mm)	Height (mm)
091148	475x175x6	6

Grids

Grey rilsan grid for pastry fridges



Code	WxDxH (mm)	Height (mm)
099932	600x800x25	25

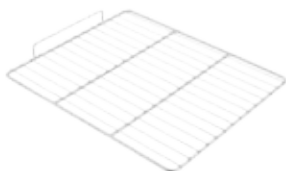
Polyethylene coated grid



Code	WxDxH (mm)	Height (mm)
0A8650	410x600x2	2

Grid in stainless steel

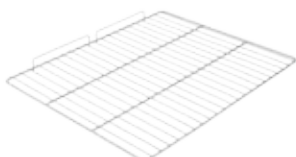
with 1 stopper on the short side, for Prostore 470lt



Code	WxDxH (mm)	Height (mm)
095009	442x520x40	40

Grid in AISI 304 GN 2/1

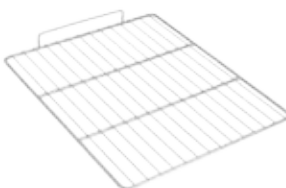
with 2 stoppers on the long side



Code	WxDxH (mm)	Height (mm)
095008	530x650x20	20

Grey rilsan grid

with 1 stopper on the short side, for Prostore 470lt

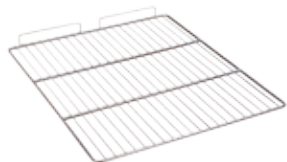


Code	WxDxH (mm)	Height (mm)
094169	442x520x40	40

Grids

Grid in AISI 304

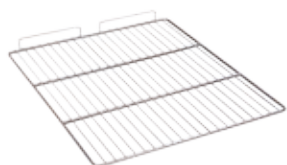
with 1 stopper on the long side, for Prostore 720lt



Code	WxDxH (mm)	Height (mm)
095010	530x700x40	40

Grid in AISI 304 GN 2/1

with 2 stoppers on the short side



Code	WxDxH (mm)	Height (mm)
081883	530x650x40	40

Perforated shelf GN 2/1

plain perforated shelf



Code	WxDxH (mm)	Height (mm)
0A8876	530x650x15	15

Stainless steel grid for PASTRY LINE refrigerated counters



Code	WxDxH (mm)	Height (mm)
0PRAY1	400x600x10	10

Rilsan grid for PASTRY LINE refrigerated counters

Code	WxDxH (mm)	Height (mm)
0PRAY2	400x600x10	10

Containers

PVC container

GN 2/1, h=200mm



Code	WxDxH (mm)	GN size
082468	530x650x200	2/1

Plastic container

GN 1/1, h=65mm



Code	WxDxH (mm)	GN size
0A8018	530x325x65	1/1

Plastic container

GN 1/1, h=100mm



Code	WxDxH (mm)	GN size
087024	530x325x100	1/1

Plastic container

GN 1/1, h=150mm



Code	WxDxH (mm)	GN size
082882	530x325x150	1/1

PVC container for fish

GN 1/1, h=200mm



Code	WxDxH (mm)	GN size
080702	530x325x200	1/1

Containers



False bottom in AISI 304

for container 080702

Code	WxDxH (mm)	GN size
080901	530x320x5	1/1



PVC container for fish

Code	WxDxH (mm)
0A8858	400x600x210

Baskets

Chromed basket GN 2/1



Code	WxDxH (mm)	GN size
082536	650x530x150	2/1

Chromed basket GN 2/1



Code	WxDxH (mm)	GN size
082537	650x530x150	2/1

Rilsan basket GN 1/1



Code	WxDxH (mm)	GN size
082794	325x530x200	1/1

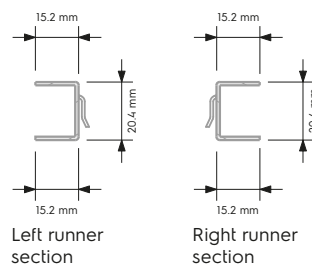
Runners

Pair of runners for Ecostore models

Kit left and right



Code	Compatible with	Length (mm)
093849	ecostore	645,5

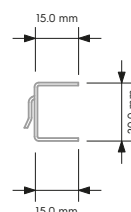


Pair of runners for Heavy Duty models

650-1400 liters



Code	Compatible with	Length (mm)
093851	HD 650-1400 liters	621,0

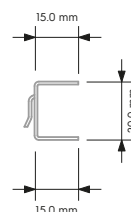


Pair of runners for Heavy Duty models

550-1100 liters



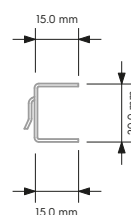
Code	Compatible with	Length (mm)
093852	HD 550-1100 liters	526,0



Pair of runners for Prostore models



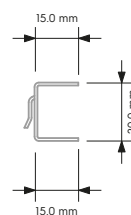
Code	Compatible with	Length (mm)
093853	Prostore	466,0



Pair of runners for Standard Benefit models



Code	Compatible with	Length (mm)
093850	Standard Benefit	581,0





Accessories & Consumables

Dishwashing

Index

Detergents.....	70
Baskets 500x500 for universal use	72
Accessories for baskets 500x500	78
Half baskets 250x500.....	81
Wire baskets 500x500	83
Baskets for glasswashers.....	84
Accessories for wire baskets.....	86
Accessories for plastic baskets	88
Baskets for Pot&Pan washers.....	89
Water taps.....	91
Water taps with shower units	93
Washing groups	99
Water treatment	101

Detergents



C11 Detergent for dishwashers

- Ideal for all types of crockery: ceramic, porcelain, glass, crystal and metal
- It is very functional for removing caffeine and theine deposits from cups and teapots.
- Its delicate aroma helps minimize the unpleasant odour which can sometimes be found in dishwashers.
- Highly recommended for restaurants preparing fish and sea food.
- Particularly suitable for hard and medium hard water

Code	Package	Compatible with
OS2092	one pack of 2 cans of 5lt.	glasswasher, undercounter,
OS2281	1 can of 20lt.	front loading, hood type, rack type



C13 ECO Detergent for dishwashers

- Ideal for all type of crockery: ceramic, porcelain, glass, crystal and metals
- It's special "Eco-Formula" free of phosphates, EDTA and NTA makes the product ecologically friendly with a very low environmental impact
- Very efficient in case of dried food residues on all kind of dishes
- Particularly suitable for soft water and recommended for dishwashing systems with osmosis or demineralisers

Code	Package	Compatible with
OS2093	one pack of 2 cans of 5lt.	glasswasher, undercounter,
OS2280	1 can of 20lt.	front loading, hood type, rack type



C12 Rinse aid for dishwashers

- Brightener additive for crockery rinsing in the dishwasher
- Guarantees sparkling clean and dry crockery
- Use of vegetable origin surfactants
- Ideal for ceramics, porcelain, glass and crystal
- Specific formula for hard water and medium hard waters

Code	Package	Compatible with
OS2094	one pack of 2 cans of 5lt.	glasswasher, undercounter, front loading, hood type, rack type



C14 Rinse aid Plus for dishwashers

- Rinse additive for crockery rinsing in the dishwashers
- Super concentrated formula recommended for soft water conditions
- Offers a perfect drying without stains or any water trace, therefore highly recommended for glasses
- Use of vegetable origin surfactants
- Ideal for dishes in glass, crystal, ceramics, porcelain

Code	Package	Compatible with
OS2095	one pack of 2 cans of 5lt.	glasswasher, undercounter, front loading, hood type, rack type



Extra LimeAway

- Liquid acidic delimer to remove the scale from dishwashers and built in steam generators.
- For professional use only.

Code	Package	Compatible with
OS1196	one pack of 4 cans of 5lt.	glasswasher, undercounter, front loading, hood type, rack type

Detergents



Peristaltic pump for detergent

model PR4 with analogic dosing regulation squeeze tubes made in santoprene used as accessory for the dishwashers without built-in dosing systems

- ▶ easy regulation
- ▶ supplied with fixing bracket, injection connection, suction tube, outlet tube and filter

Code	Compatible with
0S0669	glasswasher, undercounter, front loading, hood type, rack type without built-in dosing system

- ▶ power consumption: 3,5w
- ▶ power supply: 230V, 50Hz
- ▶ pressure: 0,1 bar
- ▶ flow: 0,6 - 4l/h



Fixed speed peristaltic pump for detergent

model PR6 with analogic dosing regulation by conductivity probe, squeeze tubes made in santoprene

- ▶ used as accessory for the dishwashers without built-in dosing systems
- ▶ easy regulation
- ▶ supplied with fixing bracket, injection connection, suction tube, outlet tube filter and conductivity probe

Code	Compatible with
0S0670	glasswasher, undercounter, front loading, hood type, rack type without built-in dosing system

- ▶ power consumption: 3,5w
- ▶ power supply: 230V, 50Hz
- ▶ pressure: 0,1 bar
- ▶ flow: 6l/h



Peristaltic pump for rinse aid

model PR1 with analogic dosing regulation tubes made in sekobil

- ▶ used as accessory for the dishwashers without built-in dosing systems
- ▶ easy regulation
- ▶ supplied with fixing bracket, injection connection with non-return valve, suction tube, outlet tube, filter, pipe connection of "fi" 6-8 mm, for single tank machines

Code	Compatible with
0S0671	glasswasher, undercounter, front loading, hood type, rack type without built-in dosing system

- ▶ power consumption: 3,5w
- ▶ power supply: 230V, 50Hz
- ▶ pressure: 3 bar
- ▶ flow: 0,2 - 1l/h



Hand pump dosing system

wall mounting hand pump for manual detergent dosing

Code
0TTW09



Power granules

Solid detergent for pot washers

Code	Package	Compatible with
0KZL56	one pack of 10kg	pot&pan washer

Baskets 500x500 for universal use

Green basket

for 12 bowls of max. diameter 240mm



Code	WxDxH (mm)	Compatible with
048891	500x500x105	undercounter, front loading, hood type, rack type

Code	Description	Compatible with
0L1965	Set of 5 pcs	undercounter, front loading, hood type, rack type

Blue basket

with wire insert for 16 flat plates or bowls of max. diameter 240mm



Code	WxDxH (mm)	Compatible with
048960	500x500x105	undercounter, front loading, hood type, rack type

Yellow basket

for 18 flat plates of max. diameter 240mm



Code	WxDxH (mm)	Compatible with
048795	500x500x105	undercounter, front loading, hood type, rack type

Code	Description	Compatible with
0L1964	Set of 5 pcs	undercounter, front loading, hood type, rack type

Grey basket

universal basket for 18 flat plates or 16 bowls of max. diameter 240mm or 9 main course plates 450x370mm



Code	WxDxH (mm)	Compatible with
068692	500x500x110	undercounter, front loading, hood type, rack type

Code	Description	Compatible with
0S0944	Set of 5 pcs	undercounter, front loading, hood type, rack type

Blue basket

with wire insert for 12 pizza plates of max. diameter 320mm (for undercounter range max. diameter 300mm; for plates up to 320mm use basket code 049895)



Code	WxDxH (mm)	Compatible with
048961	500x500x105	undercounter, front loading, hood type, rack type

Baskets 500x500 for universal use

Blue basket

for universal use



Code	WxDxH (mm)	Compatible with
048796	500x500x105	undercounter, front loading, hood type, rack type

Code	Description	Compatible with
0L1961	Set of 5 pcs	undercounter, front loading, hood type, rack type

Blue basket

with wire insert for 20 cups or 24 coffee cups



Code	WxDxH (mm)	Compatible with
048964	500x500x105	undercounter, front loading, hood type, rack type

Brown basket

for cutlery



Code	WxDxH (mm)	Compatible with
048797	500x500x105	undercounter, front loading, hood type, rack type

Code	Description	Compatible con
0L1962	Set of 5 pcs	undercounter, front loading, hood type, rack type

Blue basket

complete of 16 containers for cutlery



Code	WxDxH (mm)	Compatible with
048965	500x500x155	undercounter, front loading, hood type, rack type

Yellow cutlery containers in plastic

Set of 4 pcs



Code	WxDxH (mm)	Compatible with
0L1813	110x110x150	glasswasher, undercounter, front loading, hood type, rack type

Baskets 500x500 for universal use



Grey cutlery container in plastic

universal basket with 8 compartments

Code	WxDxH (mm)	Compatible with
0S1131	480x230x145	universal



Red basket for trays

with open side suitable for 7 trays of max. dimension 530x370mm

Code	WxDxH (mm)	Compatible with
048890	500x500x105	rack type

Code	Description	Compatible with
0L1963	Set of 5 pcs	rack type



Red basket for trays

with open side and stainless steel insert suitable for 5 insulated trays of max. dimension 530x370mm

Code	WxDxH (mm)	Compatible with
048962	500x500x105	rack type



Red basket for trays

for 6 trays of max. dimension 530x370mm

Code	WxDxH (mm)	Compatible with
068701	538x504x110	front loading, hood type, rack type



Red basket for trays

for 5 GN 1/1 trays

Code	WxDxH (mm)	Compatible with
048963	538x504x110	undercounter

Baskets 500x500 for universal use

Blue basket

for 16 glasses of max. height 70mm and max. diameter 100mm



Code	WxDxH (mm)	Compatible with
050318	500x500x105	undercounter, front loading, hood type, rack type

Blue basket

with tilted bottom for 16 glasses, max. height 100mm and max. diameter 100mm



Code	WxDxH (mm)	Compatible with
048968	500x500x155	undercounter, front loading, hood type, rack type

Blue basket

with tilted bottom for 16 glasses, max. height 150mm and max. diameter 100mm



Code	WxDxH (mm)	Compatible with
048971	500x500x205	glasswasher, undercounter, front loading, hood type, rack type

Blue basket

with tilted bottom for 16 glasses, max. height 200mm and max. diameter 100mm



Code	WxDxH (mm)	Compatible with
048974	500x500x255	undercounter, front loading, hood type, rack type

Blue basket

with tilted bottom for 25 glasses, max. height 100mm and max. diameter 80mm



Code	WxDxH (mm)	Compatible with
048969	500x500x155	undercounter, front loading, hood type, rack type

Baskets 500x500 for universal use

Blue basket

with tilted bottom for 25 glasses,
max. height 150mm and max. diameter 80mm



Code	WxDxH (mm)	Compatible with
048972	500x500x205	undercounter, front loading, hood type, rack type

Blue basket

with tilted bottom for 25 glasses,
max. height 200mm and max. diameter 80mm



Code	WxDxH (mm)	Compatible with
048975	500x500x255	undercounter, front loading, hood type, rack type

Blue basket

with tilted bottom for 36 glasses, max. height
100mm and max. diameter 70mm



Code	WxDxH (mm)	Compatible with
048970	500x500x155	undercounter, front loading, hood type, rack type

Blue basket

with tilted bottom for 36 glasses,
max. height 150mm and max. diameter 70mm



Code	WxDxH (mm)	Compatible with
048973	500x500x205	undercounter, front loading, hood type, rack type

Blue basket

with tilted bottom for 36 glasses,
max. height 200mm and max. diameter 70mm



Code	WxDxH (mm)	Compatible with
048976	500x500x255	undercounter, front loading, hood type, rack type

Baskets 500x500 for universal use

Blue basket

for 49 glasses of max. height 70mm and max. diameter 60mm



Code	WxDxH (mm)	Compatible with
048966	500x500x105	undercounter, front loading, hood type, rack type

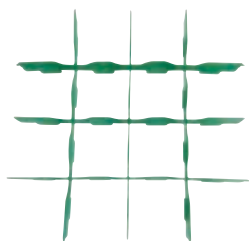
Blue basket

for 64 glasses of max. height 70mm and max. diameter 50mm



Code	WxDxH (mm)	Compatible with
048967	500x500x105	undercounter, front loading, hood type, rack type

Accessories for baskets 500x500

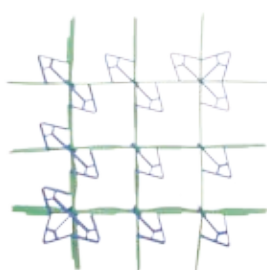


Green insert

for 16 glasses of max. diameter 100mm

Code	Compatible with
048892	Blue basket 048796

Code	Description	Compatible with
0S0572	set of 15 pcs	blue basket cod. 048796

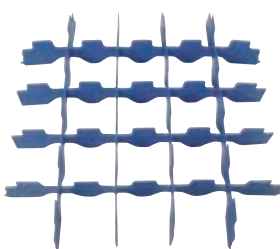


Green insert

for 16 glasses of max. diameter 100mm with tilting device

Code	Compatible with
048951	Blue basket 048796

Code	Description	Compatible with
0S0963	set of 8 pcs	blue basket cod. 048796

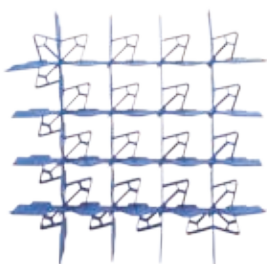


Blue insert

for 25 glasses of max. diameter 80mm

Code	Compatible with
048953	Blue basket 048796

Code	Description	Compatible with
0S0573	set of 15 pieces	Blue basket 048796

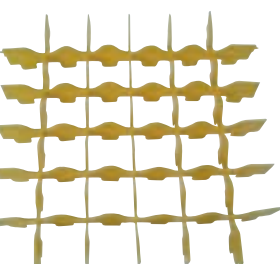


Blue insert

for 25 glasses of max. diameter 80mm with tilting device

Code	Compatible with
048952	Blue basket 048796

Code	Description	Compatible with
0S0964	set of 8 pcs	blue basket cod. 048796



Yellow insert

for 36 glasses of max. diameter 70mm

Code	Compatible with
048955	Blue basket 048796

Code	Description	Compatible with
0S0574	set of 15 pieces	blue basket cod. 048796

Accessories for baskets 500x500

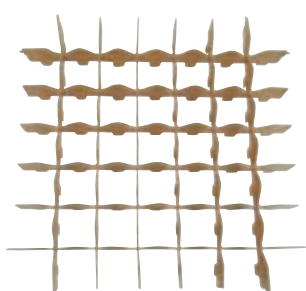


Yellow insert

for 36 glasses of max. diameter 70mm with tilting device

Code	Compatible with
048954	Blue basket 048796

Code	Description	Compatible with
0S0571	set of 8 pcs	blue basket cod. 048796

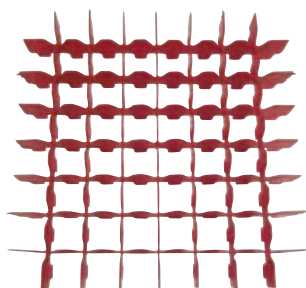


Brown insert

for 49 glasses of max. diameter 60mm

Code	Compatible with
048948	Blue basket 048796

Code	Description	Compatible with
0S0575	set of 15 pcs	blue basket cod. 048796



Red insert

for 64 glasses of max. diameter 50mm

Code	Compatible with
048949	Blue basket 048796

Code	Description	Compatible with
0S0576	set of 15 pcs	blue basket cod. 048796

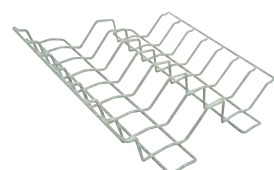


Blue frame

to increase of 50mm the height of the blue basket code 048796

Code	WxDxH (mm)	Compatible with
048950	500x500x60	Blue basket 048796

Code	Description	Compatible with
0S0571	set of 12 pcs	blue basket cod. 048796

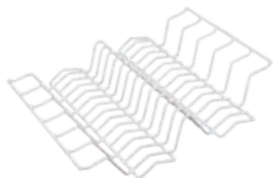


Wire insert

for 16 flat plates or bowls; for blue basket code 048796

Code	Compatible with
048946	Blue basket 048796

Accessories for baskets 500x500



Wire insert

for 12 pizza plates max diam. 320mm;
for blue basket code 048796

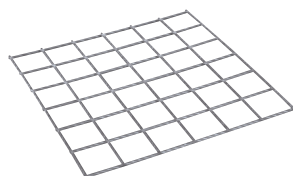
Code	Compatible with
048947	Blue basket 048796



Wire insert

for cups to be tilted; for blue basket code 048796

Code	Compatible with
069399	Blue basket 048796



Cover grid

for small and light objects

Code	WxDxH (mm)	Compatible with
050860	458x458x10	Blue basket 048796 and brown basket 048797

Half baskets 250x500

Half basket

for universal use



Code	WxDxH (mm)	Compatible with
0S1161	500x250x80	glasswasher, undercounter, front loading, hood type

Half basket

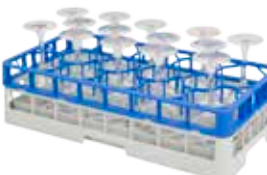
for 14 glasses of max. diam. 70mm, h 140mm



Code	WxDxH (mm)	Compatible with
0S1163	500x250x90	glasswashers, undercounter, front loading, hood type

Half basket

for 14 glasses of max. diam. 70mm, h 140mm



Code	WxDxH (mm)	Compatible with
0S1164	500x250x125	glasswashers, undercounter, front loading, hood type

Half basket

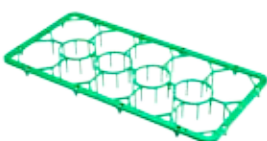
for 24 small plates



Code	WxDxH (mm)	Compatible with
0S1165	500x250x115	glasswashers, undercounter, front loading, hood type

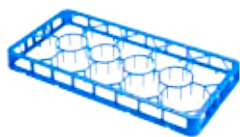
Green insert

for 14 glasses used to half basket code 0S1161



Code	WxDxH (mm)	Compatible with
0S1166	500x250x10	half basket 0S1161

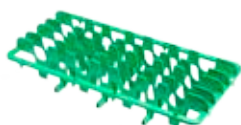
Half baskets 250x500



Blue insert

for 14 glasses used to half basket code OS1161

Code	WxDxH (mm)	Compatible with
OS1168	500x250x45	half basket OS1161



Insert

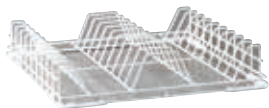
for 24 small plates used to half basket code OS1161

Code	WxDxH (mm)	Compatible with
OS1170	500x250x35	half basket OS1161

Wire baskets 500x500

Wire basket

in plastic coated steel; for 18 plates suitable for fixed jet dishwashers



Code	WxDxH (mm)	Compatible with
0S0057	500x500x93	old undercounter and hood type

Code	Description	Package
0S1045	Angular for plastic steel wire baskets	set of 20 pcs

Wire basket

in plastic coated steel; for plates and cutlery suitable for fixed jet dishwashers

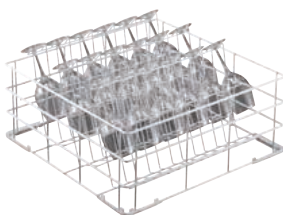


Code	WxDxH (mm)	Compatible with
0S0058	500x500x100	old undercounter and hood type

Code	Description	Package
0S1045	Angular for plastic steel wire baskets	set of 20 pcs

Wire basket

for wine glasses of max. height 270mm and max. diameter 104mm

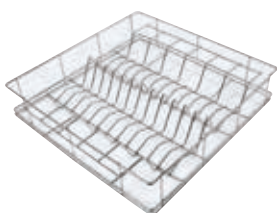


Code	WxDxH (mm)	Compatible with
0S0861	500x500x246	undercounter, hood type

Code	Description	Package
0S1045	Angular for plastic steel wire baskets	set of 20 pcs

Wire basket

in stainless steel; for 12 pizza plates of max. diameter 320mm

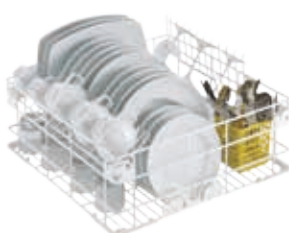


Code	WxDxH (mm)	Compatible with
049895	500x500x105	undercounter, front loading, hood type

Code	Description	Package
0S1045	Angular for plastic steel wire baskets	set of 20 pcs

Square wire basket

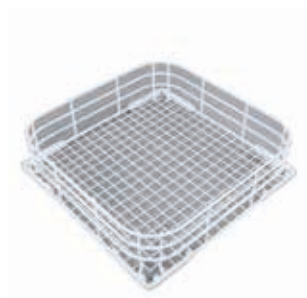
completed of insert for cups and one cutlery basket; for undercounter hood type and front loading machine



Code	WxDxH (mm)	Compatible with
0S2180	500x500x200	undercounter, front loading, hood type

Code	Description	Package
0S1045	Angular for plastic steel wire baskets	set of 20 pcs

Baskets for glasswashers



Wire basket

for glasses; suitable for model LB/WT/GW 1-2

Code	WxDxH (mm)	Compatible with
049069	395x395x100	glasswasher



Square wire basket

for glasses

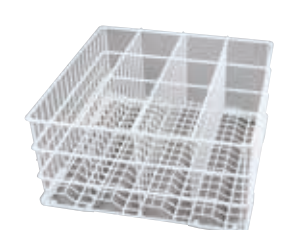
Code	WxDxH (mm)	Compatible with
0S2173	395x395x115	glasswasher



Wire basket

for glasses and cups

Code	WxDxH (mm)	Compatible with
049365	395x395x200	glasswasher



Wire basket

with tilted bottom for 16 glasses; suitable for model LB/WT/GW 1-2

Code	WxDxH (mm)	Compatible with
049367	395x395x200	glasswasher



Wire basket

for plates, capacity 16 plates of max. diameter 190mm or 8 plates of max. diameter 240mm; suitable for model LB/WT/GW 2

Code	WxDxH (mm)	Compatible with
049364	395x395x100	glasswasher

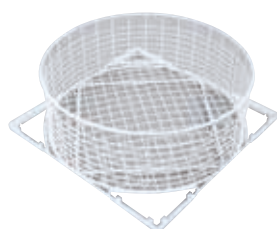
Baskets for glasswashers



Wire basket

complete with insert for plates and cutlery container; suitable for model LB/WT/GW 1-2

Code	WxDxH (mm)	Compatible with
049366	395x395x100	glasswasher



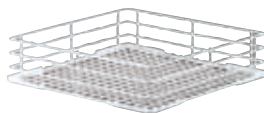
Wire round basket

for glasses with square fixing frame

Code	ØxH (mm)	Compatible with
049269	Ø400x140	glasswasher

Accessories for wire round basket code 049269

Code	Dim. (mm)	Description
0L4313	Ø400x140	wire round basket
0L4314	400x400	square fixing frame



Wire basket

for glasses, suitable for models LTB 11-12-22 (not compatible with glass washer LB/WT/GW1-2)

Code	WxDxH (mm)	Compatible with
069563	382x382x105	glasswasher
069564	382x382x200	glasswasher



Square basket

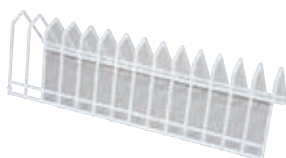
Code	WxDxH (mm)	Compatible with
0R0067	350x350x180	glasswasher
0R0069	400x400x180	glasswasher



Square basket with tilted bottom

Code	WxDxH (mm)	Compatible with
0R0068	350x350x180	glasswasher
0R0070	400x400x180	glasswasher

Accessories for wire baskets



Insert for saucers

for wire basket

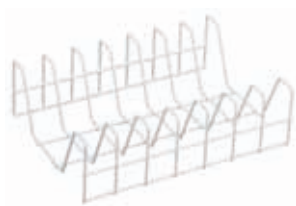
Code	WxDxH (mm)	Compatible with
049071	352x110x100	glasswasher



Insert for flute glasses

for wire basket

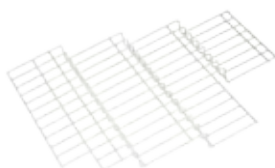
Code	WxDxH (mm)	Compatible with
0TTA00	100x400x100	glasswasher



Insert for 7 plates diam. 240 mm

For wire basket

Code	WxDxH (mm)	Compatible with
049369	327x240x100	glasswasher



Inclined insert for cups

For wire basket

Code	WxDxH (mm)	Compatible with
049368	373x265x32	glasswasher

Plastic baskets for glasswashers



Square basket for glasses

in plastic

Code	WxDxH (mm)	Compatible with
OS2174	350x350x150	glasswasher



Square basket for glasses

in plastic

Code	WxDxH (mm)	Compatible with
OS2175	380x380x150	glasswasher



Plastic basket

for glasses and small cups

Code	WxDxH (mm)	Compatible with
OS1130	400x400x150	glasswasher



Plastic basket with protected corners

for glasses and small cups

Code	WxDxH (mm)	Compatible with
OL3731	400x400x130	glasswasher



Square basket for plates

in plastic

Code	WxDxH (mm)	Compatible with
OS2176	400x400x110	glasswasher

Plastic baskets for glasswashers



Round basket for glasses

in plastic

Code	ØxH (mm)	Compatible with
0S2177	Ø350x160	glasswasher
0S2178	Ø380x170	
0S2179	Ø400x180	

Accessories for plastic baskets



Grey container for cutlery

in plastic

Code	WxDxH (mm)	Compatible with
0S2105	113x113x89	glasswasher



Insert for 12 saucers

in plastic

Code	WxDxH (mm)	Compatible with
0S2104	290x290x75	glasswasher



Tilting insert for glasses

in plastic

Code	Compatible with
0S2182	basket 0S1130
0S2215	basket 0L3731

Baskets for Pot&Pan washers



Basket for pot washers

in stainless steel

Code	WxDxH (mm)	Compatible with
0E3564	700x630x590	pot&pan washer



Basket for pot washers

in stainless steel

Code	WxDxH (mm)	Compatible with
0E3563	1300x630x590	pot&pan washer



Basket for pot washers

in stainless steel

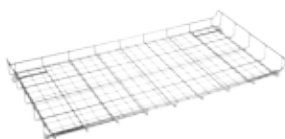
Code	WxDxH (mm)	Compatible with
049664	688x716x100	hood type, pot&pan washer



Reinforced basket for pot washers

in stainless steel

Code	WxDxH (mm)	Compatible with
0L3583	688x716x100	pot&pan washer



Basket for pot washers

in stainless steel

Code	WxDxH (mm)	Compatible with
049709	1351x716x100	pot&pan washer

Baskets for Pot&Pan washers

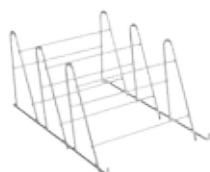
Reinforced basket for pot washers

in stainless steel



Code	WxDxH (mm)	Compatible with
0L3582	1351x716x100	pot&pan washer

Rack for containers and trays



Code	WxDxH (mm)	Compatible with
075690	500x500x110	for all baskets for all pot washers

Wire basket

for trays, pizza plates and small accessories;



Code	WxDxH (mm)	Compatible with
0L2014	535x550x103	front loading

Wire basket

for small accessories



Code	WxDxH (mm)	Compatible with
0L2441	535x550x103	front loading

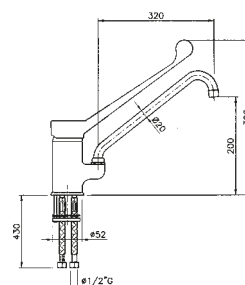
Water taps



One hole mixer tap

with lever, water supply connection $\varnothing 1/2"$,
base connection $\varnothing 52\text{mm}$,
spout L=320mm H=200mm

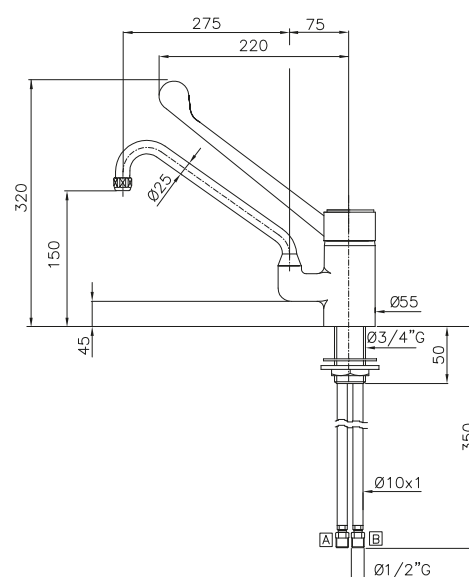
Code
OS1244



One hole mixer tap

with lever, water supply connection $\varnothing 1/2"$,
base connection $\varnothing 3/4"$, spout L=225mm H=150mm

Code
OS0863



One hole mixer tap

with lever, water supply connection $\varnothing 1/2"$,
base connection $\varnothing 3/4"$, spout L=275mm H=150mm

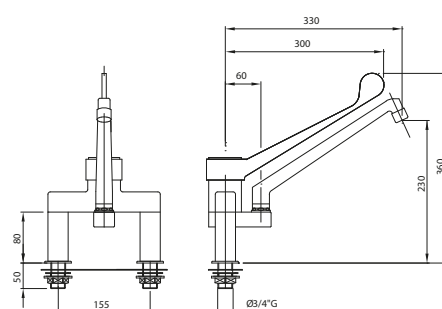
Code
OS0864



Two hole mixer tap

with lever, water supply and
base connection $\varnothing 3/4"$,
spout L=270mm H=230mm

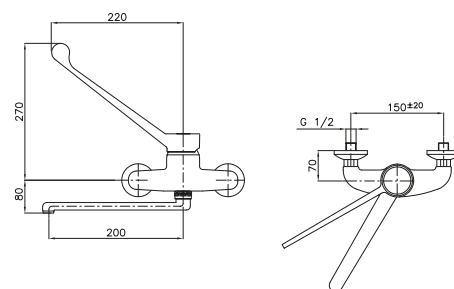
Code
OS1457



Two hole wall mounted mixer tap

with lever, water supply connection $\varnothing 1/2"$
spout L=200mm

Code
OS1250



Water taps

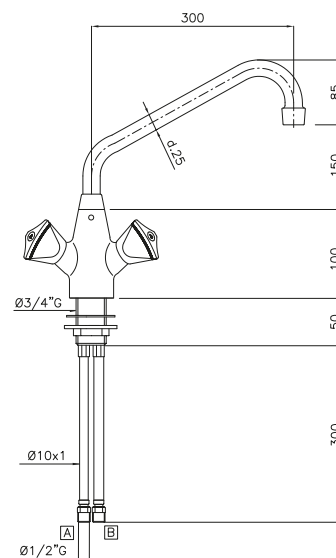


One hole mixer tap

with swivel, water supply connection $\varnothing 1/2"$,
base connection $\varnothing 3/4"$,
spout L=300mm H=250mm

Code

0S0862

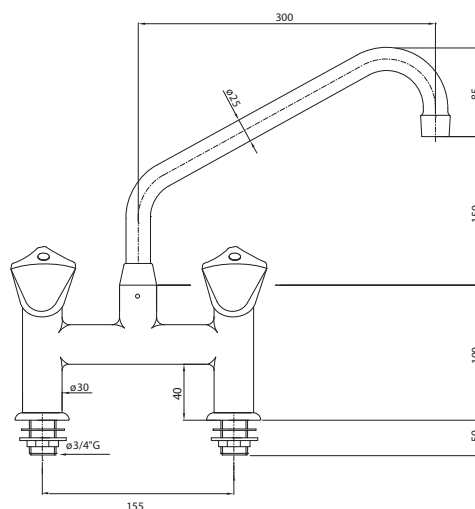


Two hole mixer tap

with swivel, water supply and
base connection $\varnothing 3/4"$,
spout L=300mm H=250mm

Code

033125

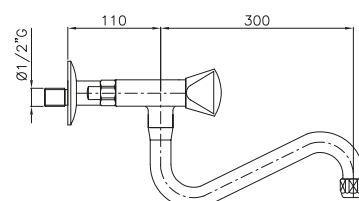
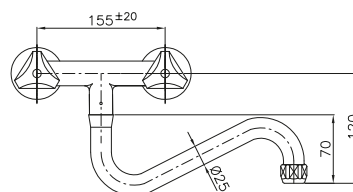


Two hole mixer tap

wall mounted; with swivel,
water supply and wall connection $\varnothing 1/2"$,
spout L=300mm
H=120mm below the level of water connection

Code

0S1472



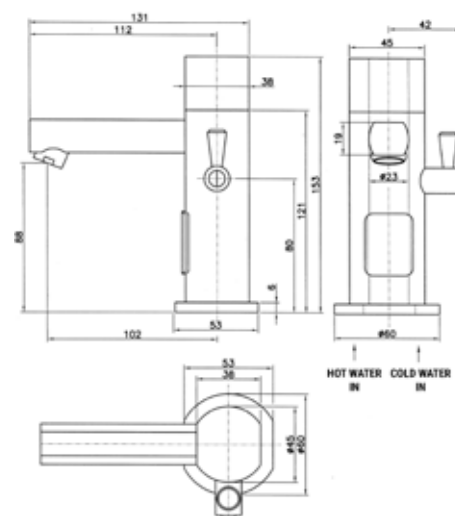
Water taps



Infrared operated one hole mixer tap

water supply connection $\varnothing 1/2"$,
base connection $\varnothing 35\text{mm}$,
spout L=102mm H=88mm;
power supply 115-230V/50Hz

Code
OS1436



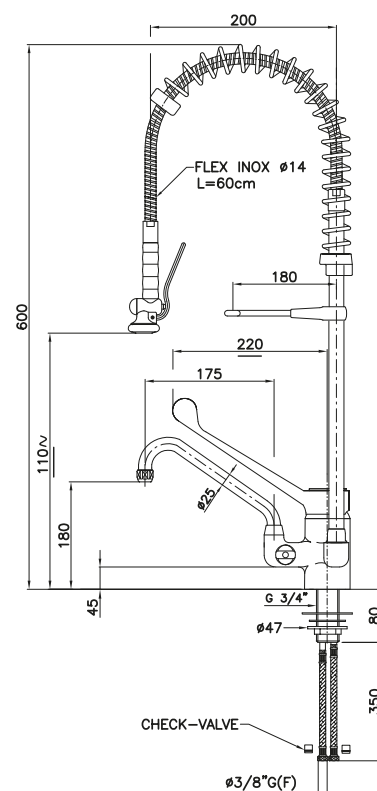
Water taps with shower units



One hole mixer tap

with lever, water supply connection $\varnothing 3/8"$,
base connection $\varnothing 3/4"$,
spout L=175mm H=180mm

Code
OS1990



Water taps with shower units

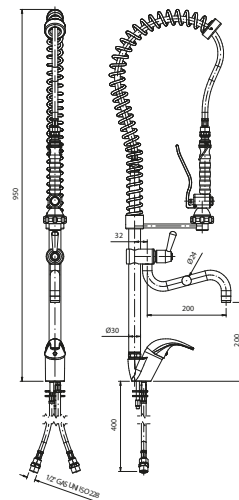


One hole mixer tap with shower unit JOLLY

with lever, water supply connection $\varnothing 1/2"$,
base connection $\varnothing 35\text{mm}$;
spout of mixer tap L=232mm H=200mm

Code

0S0956

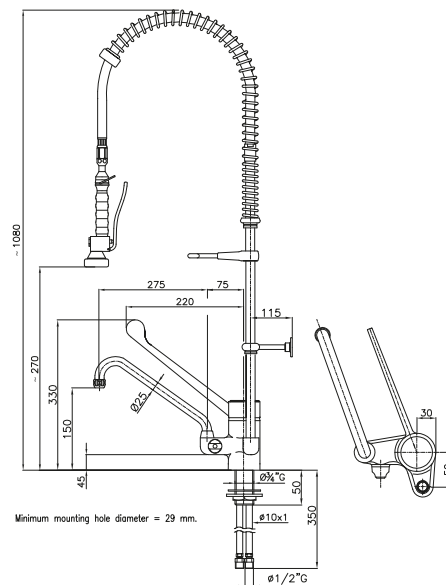


One hole mixer tap with shower unit

with lever, water supply connection $\varnothing 1/2"$,
base connection $\varnothing 3/4"$,
spout of mixer tap L=350mm H=150mm

Code

0S0874



Minimum mounting hole diameter = 29 mm.

Water taps with shower units

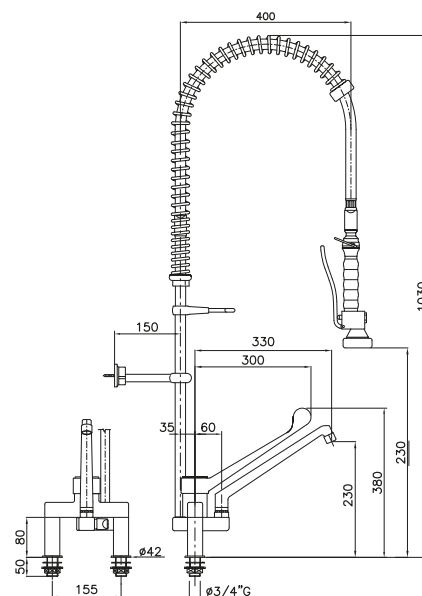


Two hole mixer tap with shower unit

with lever, water supply and
base connection $\text{Ø}3/4"$,
spout of mixer tap L=330mm H=230mm

Code

0S1461

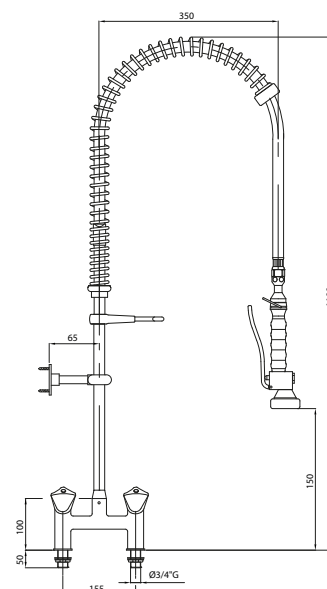


Two hole mixer shower unit

with swivel, water supply and
base connection $\text{Ø}3/4"$

Code

0L0643



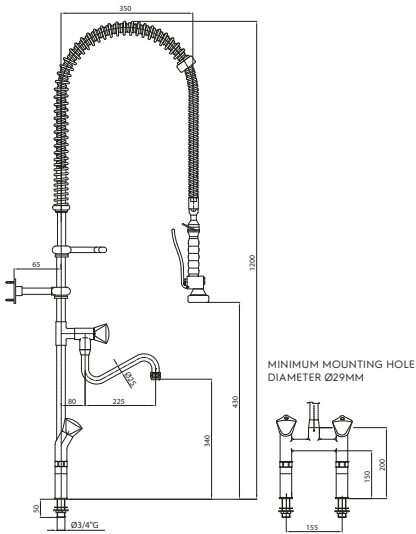
Water taps with shower units



Two hole mixer tap with shower unit

with swivel, water supply and
base connection Ø3/4",
spout of mixer tap L=305mm H=340mm

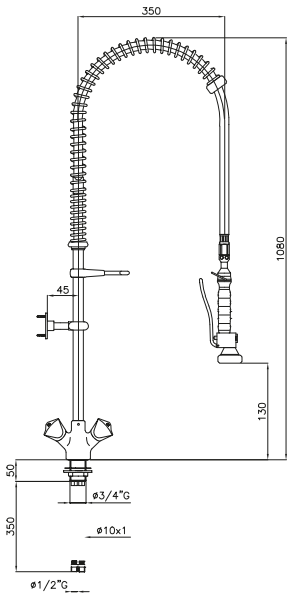
Code
OS1465



One hole shower unit

with swivel, water supply connection Ø1/2",
base connection Ø3/4"

Code
OS1036



Water taps with shower units

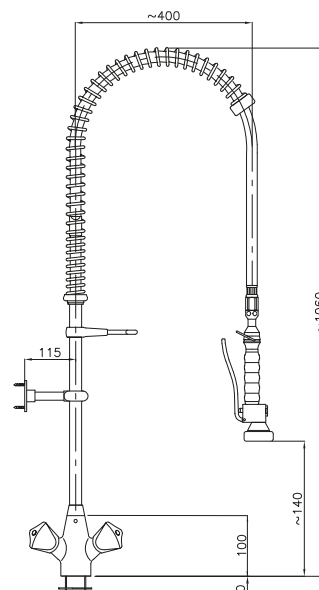


One hole shower unit with no return valve

with swivel, water supply connection $\varnothing 1/2"$,
base connection $\varnothing 3/4"$

Code

0S0951

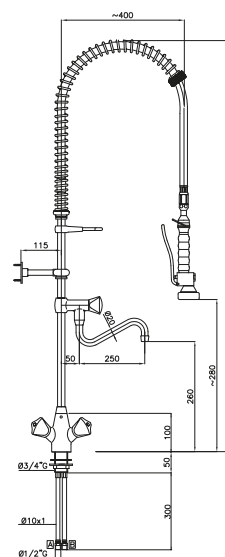


One hole mixer tap with shower unit

with swivel, water supply connection $\varnothing 1/2"$,
base connection $\varnothing 3/4"$
spout of mixer tap L=300mm H=260mm

Code

0S0906



Water taps with shower units

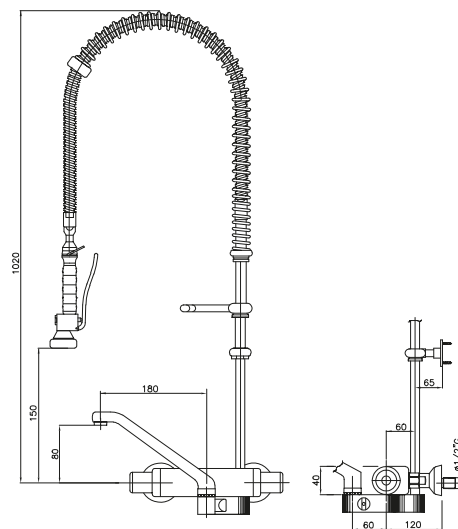


Two hole mixer tap with shower unit

wall mounted; with thermostatic control;
water supply Ø1/2";
spout of mixer tap L=180mm H=80mm

Code

0S0875



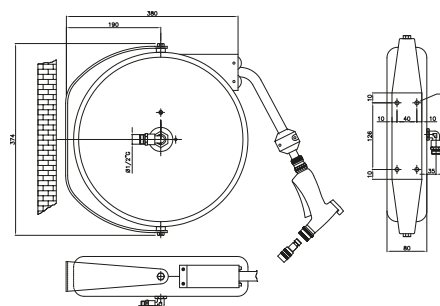
Washing groups



Washing group MIDREEL

wall mounted; water supply connection Ø1/2";
case in AISI 304, tube in EPDM,
automatic reel up

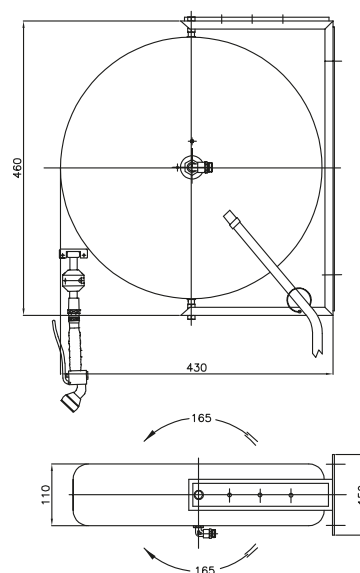
Code	Tube length
0S0876	6 m



Washing group MAXIREEL with standard shower head

wall mounted;
water supply connection Ø1/2";
case in AISI 304, tube in EPDM,
automatic reel up

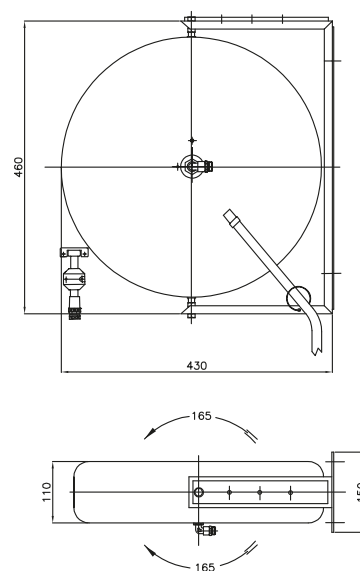
Code	Tube length
OS0877	10 m



Washing group MAXIREEL with NITO 2 shower unit

wall mounted;
water supply connection Ø1/2";
case in AISI 304, tube in EPDM,
automatic reel up

Code	Tube length
OS1857	10 m



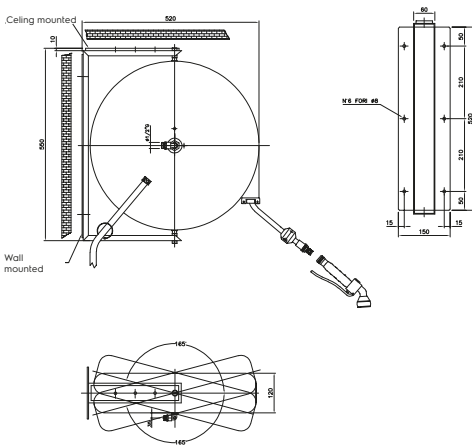
Washing groups



Washing group MAXIREEL 15m with standard shower head

wall mounted; water supply connection Ø1/2";
case in AISI 304, tube in EPDM,
automatic reel up

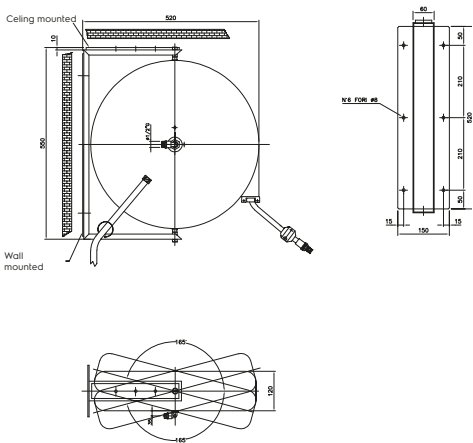
Code	Tube length
OS0878	15 m



Washing group MAXIREEL with NITO 2 shower unit

wall mounted; water supply connection Ø1/2";
case in AISI 304, tube in EPDM,
automatic reel up

Code	Tube length
OS1856	15 m
OS1923	20 m



Shower unit NITO 1 for MIDREEL

Code
OS0823



Shower unit NITO 2 for MAXIREEL

Code
OS1132

Water treatment



Filter PURITY 1200 CLEAN

for dishwashing equipments WITH PARTIAL DEMINERALIZATION including filter cartridge

- Connections: inlet 1" - outlet 3/4"
- Inward min/max pressure: 2-6 bar
- Working temperature 4°-60°C
- Capacity: 13000 lt at 10° KH with by pass at 10%

Code	ØxH (mm)
OS0801	Ø288x550

Code	Description
OS0802	Refil cartridge for PURITY1200 CLEAN



Filter PURITY 1200 CLEAN EXTRA

for dishwashing equipments, WITH TOTAL DEMINERALIZATION including filter cartridge;

- Connections: inlet 1" - outlet 3/4"
- Inward min/max pressure: 2-6 bar
- Working temperature 4°-60°C
- Capacity: 5000 lt at 10° KH with by-pass at 10%

Code	ØxH (mm)
OS0803	Ø288x550

Code	Description
OS0804	Refil cartridge for PURITY1200 CLEAN EXTRA

Code	Description
OS0945	Flowmeter



Manual water softener 8lt

- 8 lt/min.
- Tank for resins in AISI 304 of 5,6 lt
- Water attachments Ø 3/4"
- min/max pressure 1-8 bar
- temperature 8-25°C.
- Use 1 Kg salt to regenerate the resin every 1680lt water of 20°f

Code	ØxH (mm)
OC1903	Ø190x400



Manual water softener 12lt

- 12 lt/min.
- AISI 304 tank of 8,4 lt.
- Water attachments Ø 3/4"
- min/max pressure 1-8 bar
- temperature 8-25°C.
- Use 1,5 Kg Salt to regenerate the resin every 2520lt water of 20°f

Code	ØxH (mm)
OS0330	Ø190x515



Manual water softener 20lt

- 20 lt/min.
- Tank for resins in AISI 304 of 14 lt.
- Water attachments Ø 3/4"
- min/max pressure 1-8 bar
- temperature 8-25°C.
- Use 2,5 Kg Salt to regenerate the resin every 4200lt water of 20°f

Code	ØxH (mm)
OS0329	Ø190x900

Water treatment



Manual water softener 8lt with bypass

- ▶ 8 lt/min.
- ▶ Tank for resins in AISI 304 of 5,6 lt.
- ▶ Water attachments Ø 3/4"
- ▶ min/max pressure 1-8 bar
- ▶ temperature 4-25°C.
- ▶ Use 1 Kg Salt to regenerate the resin every 1680lt water of 20°F

Code	ØxH (mm)
OS1074	Ø190x400



Manual water softener 12lt with bypass

- ▶ 12 lt/min.
- ▶ Tank for resins in AISI 304 of 8,4 lt.
- ▶ Water attachments Ø 3/4"
- ▶ min/max pressure 1-8 bar
- ▶ temperature 4-25°C.
- ▶ Use 1,5 Kg Salt to regenerate the resin every 2520lt water of 20°F

Code	ØxH (mm)
OS1076	Ø190x500



Mechanical filter NK111

(recommended on each manual softener)

Code	Diameter	Water connection
OL1140	5"	3/8"

Code	Description
OS1027	Refill for 5" inch filter code OL1140 and OL1141



Mechanical filter NK112

(recommended on each manual softener)

Code	Diameter	Water connection
OL1141	5"	3/4"

Code	Description
OS1027	Refill for 5" inch filter code OL1140 and OL1141



Cationic resin for manual softeners

Use 0,814 Kg of resin to fill 1 liter of the tank

Code	Size
OS0333	pack of 25kg
OS2191	pack of 5kg

Water treatment



Automatic water softener 8lt

- ▶ with ALIA valve
- ▶ maximum water flow rate 1500 lt/h
- ▶ Power supply 230V 50Hz
- ▶ Tank in AISI of 8 lt using 5.6 lt of resin
- ▶ Salt container of 20Kg
- ▶ Water attachments Ø 3/4"
- ▶ min/max pressure 2-8 bar
- ▶ temperature range 4-30°C
- ▶ Use 1 Kg salt to regenerate the resin every 1680lt water of 20°F

Code	WxDxH (mm)
OS1946	145x450x440



Automatic water softener 8lt

- ▶ Automatic water softener with Autotrol 255 Logix 740 valve
- ▶ maximum water flow rate 1500 lt/h
- ▶ Power supply 230V 50Hz
- ▶ Tank in AISI of 8 lt using 5.6 lt of resin
- ▶ Salt container of 20Kg
- ▶ Water attachments Ø 3/4"
- ▶ min/max pressure 2-8 bar
- ▶ temperature range 4-30°C
- ▶ Regeneration salt 1 Kg 20°F 1680 lt

Code	WxDxH (mm)
OS1079	245x450x540



Automatic water softener mini

- ▶ Automatic water softener MINI with Autotrol 255 Logix 740 valve
- ▶ maximum water flow rate 1500 lt/h
- ▶ Power supply 230V 50/60Hz
- ▶ Fiberglass tank of 12 lt using 8.5 lt of resin
- ▶ Salt container of 25kg
- ▶ Water attachments Ø 3/4"
- ▶ min/max pressure 2-8 bar
- ▶ temperature range 4-25°C
- ▶ Regeneration salt 1,4 Kg 20°F 2520 lt

Code	WxDxH (mm)
OS1083	320x500x660



Automatic water softener maxi

- ▶ with Autotrol 255 Logix 740 valve
- ▶ maximum water flow rate 1500 lt/h
- ▶ Power supply 230V 50/60Hz
- ▶ Fiberglass tank of 24 lt using 17 lt of resin
- ▶ Salt container of 50Kg
- ▶ Water attachments Ø 3/4"
- ▶ min/max pressure 1-8 bar
- ▶ temperature range 4-25°C.
- ▶ Use 2,7 Kg Salt to regenerate the resin every 5040lt water of 20°F

Code	WxDxH (mm)
OS1089	320x500x1120



Resin sanitizer for water softener OS1079, OS1083, OS1089

Resin disinfection device for valve Autotrol 255 Logix (excepting valve Autotrol 366) with salt end alarm

Code	Compatible with
OS1090	OS1079, OS1083, OS1089

Water treatment



Reverse osmosis-single tank atmospheric

The external reverse osmosis is suited for installations in which high quality rinsing, spot-free drying and low operational costs are required. It has been specifically designed to be used with Undercounter and Hood type machines having atmospheric boiler. Thanks to the Reverse Osmosis technology, all the impurities (salts, particles and some kinds of bacteria) contained in the water are completely removed, eliminating any deposit on the glassware and tableware, thus guaranteeing shiny and brilliant results.

Code	WxDxH (mm)
OS1822	143x483x455



External carbon filter

for reverse osmosis code OS1822

Code	WxDxH (mm)
OS1821	225x466x460



Accessories & Consumables

Dynamic preparation

Index

Mini Green	108
TRS - TR210.....	109
Cutting disc guide	112
TR260 - TR300	120
RC14.....	122
Multigreen.....	123
TRK45 - 55 - 70.....	124
CT6/10 - DTA - CF4.....	126
K25 - 35 - 45 - 55 - 70.....	127
K120/KE120 - K120S/KE120S	130
K180/KE180 - K180S/KE180S	131
Speedy mixer - B3000	132
Emix.....	134
Ditomix.....	135
BE5.....	136
BE8.....	137
XBM10 - XBE10	138
XBM20 - XBE20 - XBB20.....	139
XBM30 - XBE30 - XBB30.....	140
MB40 - MBE40	141
BMX60 - BMXE60 - XBE60	142
BMXE80 - XBE80.....	143
Planetary mixers.....	144
T5S - T5E/T5M - T8E/T8M.....	145
T10E - T15E	147
Ti25 - T25E.....	148

Mini Green

Vegetable slicers



Mini Green accessories

653178



653178

RD2

S/steel grating disc 2 mm

653003

RD3

S/steel grating disc 3 mm

653004



653004

RD4

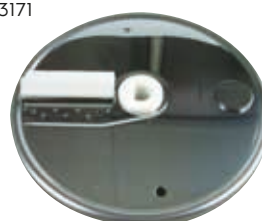
S/steel grating disc 4 mm

653005

RD7

S/steel grating disc 7 mm

653171



653171

ED2

S/steel stick cutting disc 2 mm

653006

ED4

S/steel stick cutting disc 4 mm

653176



653176

TD2

S/steel slicing disc 2 mm

653177

TD3

S/steel slicing disc 3 mm

653001



653001

TD5

S/steel slicing disc 5 mm

653002

TD7

S/steel slicing disc 7 mm

653007



653007

WD2

S/steel wavy slicing disc 2 mm



653050

Disc holder

TRS-TR210

Vegetable slicers



Accessories for discs and dicing grids for TRS and TR210

653773

**653773**

J2X

S/steel Julienne disc 2 mm

653774

J3X

S/steel Julienne disc 3 mm

653775

J4X

S/steel Julienne disc 4 mm

653776

**653776**

J7X

S/steel Julienne disc 7 mm
for mozzarella**653777**

J9X

S/steel Julienne disc 9 mm
for mozzarella**653778**

KX

S/steel grating disc
for dumplings and bread**653779**

PX

S/steel grating disc
for cheese and bread

650166

**650166**

AS2XX

S/steel stick cutting disc 2 mm

650158

AS2X8X

S/steel stick cutting disc with "S"
blades 2x8 mm (tagliatelle)**650159**

AS2X10X

S/steel stick cutting disc with "S"
blades 2x10 mm (tagliatelle)

650078

**650078**

AS6XX

S/steel stick cutting disc
with "S" blades 6x6mm
(also suitable for chips)**650079**

AS8XX

S/steel stick cutting disc
with "S" blades 8x8mm
(also suitable for chips)**650080**

AS10XX

S/steel stick cutting disc
with "S" blades 10x10mm
(also suitable for chips)**650167**

AS3XX

S/steel stick cutting disc 3 mm

650077

AS4XX

S/steel stick cutting disc 4 mm

TRS-TR210

Vegetable slicers

650082

**650081****C06SX****S/steel slicing disc with****"S" blades 0.6 mm**

(suitable for slicing or combining with dicing grids)

650082**C1SX****S/steel slicing disc with****"S" blades 1 mm**

(suitable for slicing or combining with dicing grids)

650083**C2SX****S/steel slicing disc with****"S" blades 2 mm**

(suitable for slicing or combining with dicing grids)

650084**C3SX****S/steel slicing disc with****"S" blades 3 mm**

(suitable for slicing or combining with dicing grids)

650085**C4SX****S/steel slicing disc with****"S" blades 4 mm**

(suitable for slicing or combining with dicing grids)

650160

**650086****C5SX****S/steel slicing disc with "S"****blades with pusher 5 mm**

(suitable for slicing or combining with dicing grids)

650087**C6SX****S/steel slicing disc with "S"****blades with pusher 6 mm**

(suitable for slicing or combining with dicing grids)

650088**C8SX****S/steel slicing disc with "S"****blades with pusher 8 mm**

(suitable for slicing or combining with dicing grids)

650160**C10SX****S/steel slicing disc with "S" blades with pusher 10 mm**

MOZZARELLA (suitable for slicing or combining with dicing grids)

650161**C12SX****S/steel slicing disc with "S" blades with pusher 12 mm**

(suitable for slicing or combining with dicing grids)

650165**C13SX****S/steel slicing disc with "S" blades with pusher 13 mm**

(suitable for slicing or combining with dicing grids)

650089

**650089****C2WX****S/steel disc with corrugated****"S" blades 2 mm**

(suitable for slicing or combining with dicing grids)

650090**C3WX****S/steel disc with corrugated****"S" blades 3 mm**

(suitable for slicing or combining with dicing grids)

650091**C6WX****S/steel disc with corrugated****"S" blades 6 mm**

(suitable for slicing or combining with dicing grids)

650162

**650162****C8WX****S/steel disc with corrugated****"S" blades with pusher 8 mm**

(suitable for slicing or combining with dicing grids)

650164**C10WX****S/steel disc with corrugated****"S" blades with pusher 10 mm**

(suitable for slicing or combining with dicing grids)

TRS-TR210

Vegetable slicers

653568

**653566****MT05T****S/steel dicing grid 5x5 mm**

for combining with slicing discs with smooth blades (C) and corrugated blades (CW)

653567**MT08T****S/steel dicing grid 8x8 mm**

for combining with slicing discs with smooth blades (C) and corrugated blades (CW)

653568**MT10T****S/steel dicing grid 10x10 mm**

for combining with slicing discs with smooth blades (C) and corrugated blades (CW)

653569**MT12T****S/steel dicing grid 12x12 mm**

for combining with slicing discs with smooth blades (C) and corrugated blades (CW)

653570**MT20T****S/steel dicing grid 20x20 mm**

for combining with slicing discs with smooth blades (C) and corrugated blades (CW)

653572

**653571****FT06****S/steel grid for chips/strips****6x6 mm**

for combining with slicing discs with smooth blades (C) and corrugated blades (CW)

653572**FT08****S/steel grid for strips 8x8 mm**

for combining with slicing discs with smooth blades (C) and corrugated blades (CW)

653573**FT10****S/steel grid for strips 10x10 mm**

for combining with slicing discs with smooth blades (C) and corrugated blades (CW)

653772**Ejector disc****653283****S/steel trolley with bench top, folding shelves, bottom shelf and disc rack**

for TRK, TRS and TR210 table top models

**650065****S/steel trolley for tray GN 2/1****(tray not included) for TR210.**

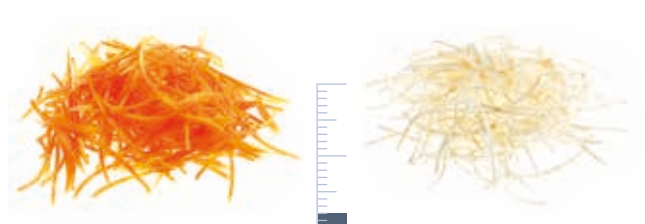
Recommended for collecting cut products, for placing under the product outlet

Cutting disc guide

TRS - TR210

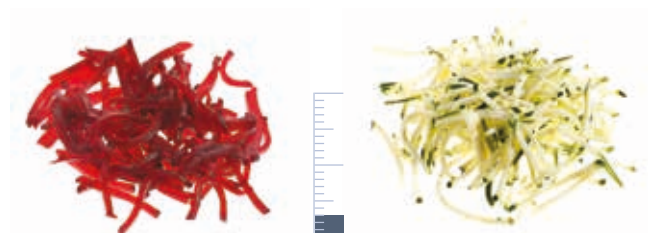


**Stick cutting discs
from 2 to 10 mm**



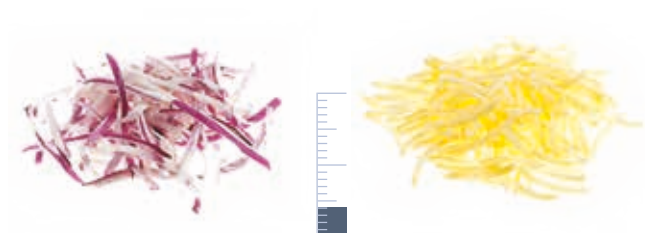
AS2XX
650166

2 mm



AS3XX
650167

3 mm



AS4XX
650077

4 mm



AS6XX
650078

6 mm



AS8XX
650079

8 mm



AS10XX
650080

10 mm



AS2X8X
650158

8 mm



AS2X10X
650159

10 mm

Cutting disc guide

TRS and TR210



Julienne discs
from 2 to 9 mm



J2X
653773

2 mm



J3X
653774

3 mm



J4X
653775

4 mm



J7X
653776

7 mm



J9X
653777

9 mm



KX
653778

for dumplings/bread/potatoes



PX
653779

for Parmesan cheese / chocolate

Cutting disc guide

TRS - TR210



**Slicing discs
from 0.6 to 13 mm**



C06SX
650081

0.6 mm



C1SX
650082

1 mm



C2SX
650083

2 mm



C3SX
650084

3 mm



C4SX
650085

4 mm



C5SX
650086

5 mm



C6SX
650087

6 mm



C8SX
650088

8 mm



C10SX
650160

10 mm



C12SX
650161

12 mm



C13SX
650165

13 mm



Cutting disc guide

TRS - TR210



Discs with corrugated
blades
from 2 to 9 mm



C2WX
650089

2 mm



C3WX
650090

3 mm



C6WX
650091

6 mm



C8WX
650162

8 mm



C10WX
650164

10 mm

Cutting disc guide

TRS - TR210



Dicing grids

from 5x5 mm to 20x20 mm

for combining with slicing discs with smooth blades (C) and corrugated blades (CW)



C5SX+MT05T
650086+653566

5x5x5 mm



C8SX+MT08T
650088+653567

8x8x8 mm



C10SX+MT10T
650160+653568

10x10x10 mm



C12SX+MT12T
650161+653569

12x12x12 mm



C10WX+MT20T 10x20x20 mm
650164+653570



C13SX+MT20T
650165+653570



13x20x20 mm



C2WX+MT20 2x20x20 mm
650089+653570



C3WX+MT10 3x10x10 mm
650091+653570



C3SX+MT12 3x12x12 mm
650084+653569



C4SX+MT20 4x20x20 mm
650085+653570



C3WX+MT12 3x12x12 mm
650090+653569



C6WX+MT10 6x10x10 mm
650091+653568

Cutting disc guide

TRS - TR210



Strip grids 6, 8 and 10 mm

for combining with slicing discs with smooth blades (C) and corrugated blades (CW)



C6SX+FT06 6x6 mm
650087+653571



C8SX+FT08 8x8 mm
650088+653572



C10WX+FT10 10x10 mm
650164+653573



C2SX+FT10 10x10 mm
650083+653573



C3WX+FT10 10x10 mm
650090+653573

Blades for discs TRS - TR210 - CX21D

OLD disc code	Knife/plate type	No. OLD knives	OLD spare part	Set pcs spare part	Disc code	NEW disc code	Disc model	Description	Knife/plate type	No. NEW knives	NEW spare part	Set pcs spare part code
					653728	650081	C06SX	S/steel SLICING disc with "S" blades 0.6 mm	curved	2	0D7431	2
653101	straight	3	OKJ658	3								
653111	curved	2	OKJ003	2	653729	650082	C1SX	S/steel SLICING disc with "S" blades 1 mm	curved	2	0D7431	2
653102	straight	3	OKJ658	3								
653112	curved	2	OKJ003	2	653730	650083	C2SX	S/steel SLICING disc with "S" blades 2 mm	curved	2	0D7431	2
653103	straight	2	OKJ658	3								
653113	curved	1	OKJ003	2	653731	650084	C3SX	S/steel SLICING disc with "S" blades 3 mm	curved	2	0D7431	2
					653732	650085	C4SX	S/steel SLICING disc with "S" blades 4 mm	curved	2	0D7431	2
653115	curved	1	OKJ003	2	653733	650086	C5SX	S/steel SLICING disc with "S" blades 5 mm	curved	2	0D7431	2
					650048			S/steel SLICING disc with "S" blades 5 mm with pusher	curved	1	0D7431	2
653106	straight	2	OKJ658	3	653735	650087	C6SX	S/steel SLICING disc with "S" blades 6 mm	curved	2	0D7431	2
					650049			S/steel SLICING disc with "S" blades 6 mm with pusher	curved	1	0D7431	2
653108	straight	1	OKJ658	3	653737	650088	C8SX	S/steel SLICING disc with "S" blades 8 mm	curved	2	0D7431	2
					650050			S/steel SLICING disc with "S" blades 8 mm with pusher	curved	1	0D7431	2
653110	straight	1	OKJ658	3	650051	650160	C10SX	S/steel SLICING disc with "S" blades 10 mm with pusher	curved	1	0D7431	2
					650052		C10PSMB	S/steel SLICING disc with "S" blades 10 mm with pusher MOZZARELLA				
					650053	650161	C12SX	S/steel SLICING disc with "S" blades 12 mm	curved	1	0D7431	2
					650054	650165	C13SX	S/steel SLICING disc with "S" blades 13 mm	curved	1	0D7431	2
653185	straight	1	OKJ658	3				Aluminium SLICING disc 14 mm				
653122	corrugated	3	OD0359	3	653749	650089	C2WX	S/steel disc with CORRUGATED "S" blades 2 mm	corrugated	2	0D7424	2
653123	corrugated	3	OD0359	3	653750	650090	C3WX	S/steel disc with CORRUGATED "S" blades 3 mm	corrugated	2	0D7424	2
653126	corrugated	3	OD0360	3	653751	650091	C6WX	S/steel disc with CORRUGATED "S" blades 6 mm	corrugated	2	0D7424	2
					650055	650162	C8WX	S/steel disc with CORRUGATED "S" blades 8 mm	corrugated	1	0D7424	2
					650056	650164	C10WX	S/steel disc with CORRUGATED "S" blades 10 mm	corrugated	1	0D7424	2
653162, 653713	julienne	1	OD0815	1	653773		J2X	S/steel JULIENNE disc 2 mm	julienne	1	0D7458	1
653163, 653714	julienne	1	OD0816	1	653774		J3X	S/steel JULIENNE disc 3 mm	julienne	1	0D7459	1
653164, 653715	julienne	1	OKQ435	1	653775		J4X	S/steel JULIENNE disc 4 mm	julienne	1	0D7460	1
653167, 653716	julienne	1	OD0822	1	653776		J7X	S/steel JULIENNE disc 7 mm	julienne	1	0D7461	1
653498, 653717	julienne	1	OD7114	1	653777		J9X	S/steel JULIENNE disc 9 mm	julienne	1	0D7462	1
653008, 653718	grating	1	OD0774	1	653778		KX	S/steel GRATING disc for dumplings and bread	grating	1	0D7463	1
653170, 653719	grating	1	OD0825	1	653779		PX	S/steel GRATING disc for Parmesan cheese and bread	grating	1	0D7464	1
653214	curved	2	OKL028	2								
	comb	2	OD0695	1	653743	650166	AS2XX	S/steel STICK cutting disc with "S" blades 2x2 mm	curved	2	0D7431	2
									comb	2	0D7425	1
					650095	650158	AS2X8X	S/steel STICK cutting disc with "S" blades 2x8 mm	curved	2	0D7431	2
									comb	2		
					650096	650159	AS2X10X	S/steel STICK cutting disc with "S" blades 2x10 mm	curved	2	0D7431	2
									comb	2		
653153	curved	2	OKL028	2								
	comb	2	OKQ411	1	653744	650167	AS3XX	S/steel STICK cutting disc with "S" blades 3x3 mm	curved	2	0D7431	2
									comb	2	0D7426	1
653154	curved	2	OKL028	2								
	comb	2	OKQ412	1	653745	650077	AS4XX	S/steel STICK cutting disc with "S" blades 4x4 mm	curved	2	0D7431	2
									comb	2	0D7427	1
					653746	650078	AS6XX	S/steel STICK cutting disc with "S" blades 6x6 mm	curved	1	0D7431	1
									comb	1	0D7428	1
					653747	650079	AS8XX	S/steel STICK cutting disc with "S" blades 8x8 mm	curved	1	0D7431	1
									comb	1	0D7429	1
					653748	650080	AS10XX	S/steel STICK cutting disc with "S" blades 10x10 mm	curved	1	0D7431	1
									comb	1	0D7430	1

New

Blades for discs TR 250 - TR260 - TR300

OLD disc code	Knife/plate type	No. OLD knives	OLD spare part code	Set pcs spare part code	NEW disc code	Disc model	Description	Knife/plate type	No. NEW knives	NEW spare part code	Set pcs spare part code
653188	slicing	2	OKJ769	2	653188	C301	SLICING disc 1 mm	curved	2	OKJ769	2
653172	slicing	2	OKJ769	2	653172	C302	SLICING disc 2 mm	curved	2	OKJ769	2
653173	slicing	2	OKJ769	2	653173	C303	SLICING disc 3 mm	curved	2	OKJ769	2
653189	slicing	1	OU0547	2	653189	C305	SLICING disc 5 mm	curved	1	OU0547	2
653190	slicing	1	OKJ769	2	653190	C306	SLICING disc 6 mm	curved	1	OKJ769	2
653191	slicing	1	OKJ769	2	653191	C308	SLICING disc 8 mm	curved	1	OKJ769	2
653192	slicing	1	OKJ769	2	653192	C310	SLICING disc 10 mm	curved	1	OKJ769	2
653193	slicing	1	OKJ769	2	653193	C316	SLICING disc 16 mm	curved	1	OKJ769	2
					653009	D601	Corer SLICING disc 1 mm	curved	2	OKJ769	2
					653227	D602	Corer SLICING disc 2 mm	curved	2	OKJ769	2
					653228	D603	Corer SLICING disc 3 mm	curved	2	OKJ769	2
653217	corrugated	3	OD0360	3	653217	C302	SLICING disc 2 mm for wavy cut	corrugated	3	OD0360	3
653218	corrugated	3	OD0360	3	653218	C303	SLICING disc 3 mm for wavy cut	corrugated	3	OD0360	3
653219	corrugated	1	OD0360	3	653219	C306	SLICING disc 6 mm for wavy cut	corrugated	3	OD0360	3
653174	julienne	1	OD0783		653761	NJ302	S/steel JULIENNE disc 2 mm	julienne	1	OD7437	1
					650150	J302N	S/steel Julienne disc 2 mm, reinforced	julienne	1	OD7834	1
653175	julienne	1	OU0430		653762	NJ303	S/steel Julienne disc 3mm	julienne	1	OD7438	1
					650151	J303N	S/steel Julienne disc 3mm, reinforced	julienne	1	OD7835	1
653194	julienne	1	OU0430		653763	NJ304	S/steel Julienne disc 4mm	julienne	1	OD7439	1
					650152	J304N	S/steel Julienne disc 4mm, reinforced	julienne	1	OD7836	1
653215	julienne	1	OU0550		653764	NJ307	S/steel Julienne disc 7mm	julienne	1	OD7440	1
					650153	J304N	S/steel Julienne disc 7mm, reinforced	julienne	1	OD7837	1
					650157	DJ607N	S/steel Julienne disc for corer 7 mm	julienne	1	OD7837	1
					650155	J307MN	S/steel GRATING disc 7 mm MOZZARELLA	grating	1	OD7837	1
					650156	J309MN	S/steel GRATING disc 9 mm MOZZARELLA	grating	1	OD7838	1
653216	grating	1	OD5411		653759	NP300	S/steel GRATING disc for Parmesan cheese	grating	1	OD7441	1
					650148	P300	S/steel GRATING disc for Parmesan cheese, reinforced	grating	1	OD7839	1
653220	grating	1	OD1919		653760	NK300	S/steel GRATING disc for dumplings	grating	1	OD7442	1
					650149	K300	S/steel GRATING disc for dumplings	grating	1	OD7840	1
653195	curved	3	OKJ726	3	653195	A302	STICK cutting disc 2X2 mm	curved	3	OKJ726	3
	comb	3	OD1528	1				comb	3	OD1528	1
653196	curved	3	OKJ726	3	653196	A303	STICK cutting disc 3X3 mm	curved	3	OKJ726	3
	comb	3	OU0444	1				comb	3	OU0444	1
653197	curved	3	OKJ726	3	653197	A304	STICK cutting disc 4X4 mm	curved	3	OKJ726	3
	comb	3	OKJ758	1				comb	3	OKJ758	1
653198	curved	1	OU0436	1	653198	AF306	STICK cutting disc 6X6mm (chips9	curved	1	OU0436	1
	comb	1	OD1499	1				comb	1	OD1499	1
653199	curved	1	OU0436	1	653199	AF308	STICK cutting disc 8X8mm (chips	curved	1	OU0436	1
	comb	1	OU0450	1				comb	1	OU0450	1
653200	curved	1	OU0436	1	653200	AF310	STICK cutting disc 10X10mm (chips	curved	1	OU0436	1
	comb	1	OU0458	1				comb	1	OU0458	1



When changing blades it is advisable to use threadlock glue

OD7727

LOCTITE 2700 threadlock glue

50ml tube

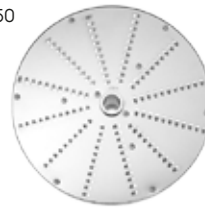
TR260-TR300

Vegetable slicers



Accessories for discs and dicing grids for TR260-TR300

650150



650150

J302N S/steel Julienne disc 2 mm

650151

J303N S/steel Julienne disc 3 mm

650152

J304N S/steel Julienne disc 4 mm

650153

J307N S/steel Julienne disc 7 mm

650155

J307MN

S/steel grating disc 7 mm

MOZZARELLA

only with cabbage hopper, hood (only for TR260)



650156

J309MN

S/steel grating disc 9 mm

MOZZARELLA

only with cabbage hopper, hood (only for TR260)



650148



650148

P300

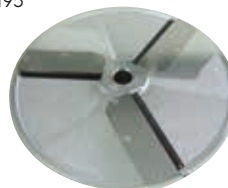
S/steel grating disc
Parmesan cheese

650149

K300

S/steel grating disc
dumplings

653195



653195

A302

Stick cutting disc 2x2 mm

653196

A303

Stick cutting disc 3x3 mm

653197

A304

Stick cutting disc 4x4 mm

653198



653198

AF306

Stick cutting disc 6x6 mm

653199

AF308

Stick cutting disc 8x8 mm

653200

AF310

Stick cutting disc 10x10 mm

653188



653188

C301 Slicing disc 1 mm

653172

C302 Slicing disc 2 mm

653173

C303 Slicing disc 3 mm

653189

C305 Slicing disc 5 mm
curved knife with knurling
for tomatoes

653190

C306 Slicing disc 6 mm

653191

C308 Slicing disc 8 mm

653192

C310 Slicing disc 10 mm

653193

C316 Slicing disc 16 mm



650157

DJ607N

S/steel Julienne disc

for corer 7 mm

for cabbage hopper, hood (only for TR260)

TR260-TR300

Vegetable slicers

653009

**653009****D601**

Corer slicer disc 1 mm
for cabbage hopper
only for TR260)

653227**D602**

Corer slicer disc 2 mm
for cabbage hopper, hood (only for
TR260)

653228**D603**

Corer slicer disc 3 mm
for cabbage hopper, hood (only for
TR260)

653217

**653217**

C302W Slicing disc 2 mm
for wavy cut

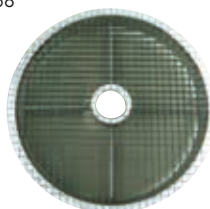
653218

C303W Slicing disc 3 mm
for wavy cut

653219

C306W Slicing disc 6 mm
for wavy cut

653068

**653068**

M310 Dicing grid 10x10 mm
for TR300

653499

M312 Dicing grid 12x12 mm
for TR300

653075

M316 Dicing grid 16x16 mm
for TR300

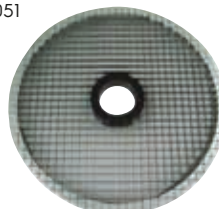
653073

M320 Dicing grid 20x20 mm
for TR300

653259

M332 Dicing grid 32x32 mm
for TR300

653051

**653051**

MT310 Dicing grid 10x10 mm
for TR260

653301

MT312 Dicing grid 12x12 mm
for TR260

653052

MT316 Dicing grid 16x16 mm
for TR260

653053

MT320 Dicing grid 20x20 mm
for TR260

653054

MT325 Dicing grid 25x25 mm
for TR260

653055

MT332 Dicing grid 32x32 mm
for TR260

653143

**653142**

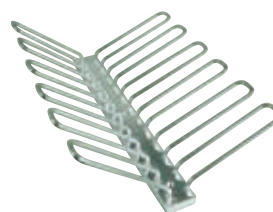
ES300 Universal ejector
(not chips) for TR300

653143

EF300 Ejector for chips
(only for chip cutting blocks)

**653017**

S/steel mount
with 4 wheels with brake
h=730 mm (only for TR260)

**653212**

S/steel disc holder
(for discs diam. 300)
for fixing to mount 653017
(only for TR260)

TR260-TR300

Vegetable slicers

653069



653076

Chip cutting block 6x6 mm
for combining with slicing discs
and ejector 653143
(only for TR300)

653074

Chip cutting block 8x8 mm
for combining with slicing discs
and ejector 653143
(only for TR300)

653069

Chip cutting block 10x10 mm
for combining with slicing discs
and ejector 653143
(only for TR300)



653224

**S/steel trolley
for tray GN 2/1
(tray not included)**
recommended for collecting cut
products, for placing under the
product outlet

RC14

Potato cutter



**Accessories for
Potato cutter RC14**

653022



Stick cutting blocks

653022

8x8 mm (chips)

653023

10x10 mm (chips)

653024

12x12 mm (chips)

653018

14x14 mm (chips)

653503



Slicing blocks

653503

4 mm (chips)

653504

6 mm (chips)

653505

8 mm (chips)



653017

**S/steel mount
with 4 wheels with brake h=730 mm**



653224

**S/steel trolley
for tray GN 2/1
(tray not included)**
recommended for collecting cut
products, for placing under the
product outlet

Multigreen

Combined vegetable slicer-cutter



Accessories for Multigreen



653145

Set of accessories for cutter function:

- 2.5 l ABS bowl
with cover and smooth blade
knife group

653047

Set of accessories for cutter function:

- 2.5 l s/steel bowl
with cover and smooth blade
knife group



653146

Smooth blade knife group
for Multigreen/K25



650035

Microtoothed blade knife group
for Multigreen/K25



653487

2.5 l s/steel bowl
for Multigreen cutter mixer



653488

2.5 l ABS bowl
for Multigreen cutter mixer



653512

**Transparent polycarbonate
cover for vegetable slicer**
(K25 and Multigreen)



653770

"Fresh cut" hopper
with safety lever



0D6447

Plastic knife group holder
also suitable for wall mounting

TRK45 - 55 - 70

Combined vegetable slicer-cutter



Accessories for TRK45-TRK55-TRK70

653581



653579

Smooth blade knife group
for cutter mixer TRK45

653581

Smooth blade knife group
for cutter mixer TRK55

653583

Smooth blade knife group
for cutter mixer TRK70

653665



653614

Smooth blade knife group
specific for emulsions
for cutter mixer TRK45

653665

Smooth blade knife group
specific for emulsions
for cutter mixer TRK55

653712

Smooth blade knife group
specific for emulsions
for cutter mixer TRK70

650040



650039

Microtoothed blade knife group
specific for emulsions
for cutter mixer TRK45

650040

Microtoothed blade knife group
specific for emulsions
for cutter mixer TRK55

650041

Microtoothed blade knife group
specific for emulsions
for cutter mixer TRK70

653582



653580

Microtoothed blade knife group
for cutter mixer TRK45

653582

Microtoothed blade knife group
for cutter mixer TRK55

653584

Microtoothed blade knife group
for cutter mixer TRK70



653772

Ejector disc TRK45-55-70



0D6447

Plastic knife group holder
also suitable for wall mounting

653588



653588

Cover and bowl scraper
for cutter mixer TRK45

653589

4.5 l s/steel bowl
for cutter mixer TRK45

653591



653591

Cover and bowl scraper
for cutter mixer TRK55

653590

5.5 l s/steel bowl
for cutter mixer TRK55

TRK45-55-70

Combined vegetable slicer-cutter

653592



653592

Cover and bowl scraper
for cutter mixer TRK70

653593

7 l s/steel bowl
for cutter mixer TRK70



653283

S/steel trolley
with bench top, folding
shelves, bottom shelf
and disc rack
for TRK, TRS and TR210 table top
models



Multi 200 accessories

653559



653559

Smooth blade knife group
for Multi 200

653281

3.5 l s/steel bowl
for Multi 200

CT6/10 - DTA - CF4

Manual vegetable slicers



Accessories for CT6/10

653104



653100

6 mm blade block
for cutter-slicer CT6

653107

10 mm blade block
for cutter-slicer CT10

653099

Guide 6 mm
for cutter-slicer CT6



Accessories for potato cutter CF4

653461



653445

Grid 7 mm

653460

Grid 9 mm

653461

Grid 11 mm

653462

Pusher 7 mm

653463

Pusher 9 mm

653464

Pusher 11 mm



653124

Cast iron base for CF4
on table



Accessories for DTA Divider for tomatoes, citrus fruit, apples

653467



653467

Grid 4 segments
for tomatoes and citrus fruit
portioners for tomato, citrus fruit
and apples

653468

Grid 6 segments
for tomatoes and citrus fruit
portioners for tomato, citrus fruit
and apples

653469

Grid 8 segments
for tomatoes and citrus fruit
portioners for tomato, citrus fruit
and apples

653470

Grid 12 segments
for tomatoes and citrus fruit
portioners for tomato, citrus fruit
and apples

653471



653471

Grid 8 segments for apples
for apples portioners

653472

Grid 12 segments for apples
for apples portioners

653118

Additional pusher
4/8 segments

653117

Additional pusher
6/12 segments

K25 - 35 - 45 - 55 - 70

Cutters



**Accessories for
K25**



653047

**Set of accessories for cutter
function:**

- 2.5 l s/steel bowl,
cover, smooth blade
knife group



653487

**2.5 l s/steel bowl
for K25**



653512

**Transparent polycarbonate
cover**

for vegetable slicer
(K25 and Multigreen)



653146

**Smooth blade knife group
for K25**



650035

**Microtoothed blade knife group
for K25/Multigreen**



**Accessories for
K35**



653029

**Smooth blade knife group
for K35**

653028

**Smooth blade knife group
for K35**



653096

S/steel bowl for K35

K25-35-45-55-70

Cutters



Accessories for K45



653579
Smooth blade knife group
for cutter mixer K45



653614
Smooth blade knife group
specific for emulsions for cutter
mixer K45



650039
Microtoothed blade knife group
specific for emulsions for cutter
mixer K45



653580
Microtoothed blade knife group
for cutter mixer K45

653588



653588
Cover and scraper
for cutter mixer K45

653589
4.5 l s/steel bowl
for cutter mixer K45



Accessories for K55



653581
Smooth blade knife group
for cutter mixer K55



653665
Smooth blade knife group
specific for emulsions for cutter
mixer K55



650040
Microtoothed blade knife group
specific for emulsions for cutter
mixer K55

K25 - 35 - 45 - 55 - 70

Cutters



653582
Microtoothed blade knife group
for cutter mixer K55

653591



653591
Cover and bowl scraper
for cutter mixer K55

653590
5.5 l s/steel bowl
for cutter mixer K55



**Accessories for
K70**



653583
Smooth blade knife group
for cutter mixer K70



653712
Smooth blade knife group
specific for emulsions for cutter
mixer K70



650041
Microtoothed blade knife group
specific for emulsions for cutter
mixer K70



653584
Microtoothed blade knife group
for cutter mixer K70

653592



653592
Cover and bowl scraper
for cutter mixer K70

653593
7 l s/steel bowl
for cutter mixer K70



0D6447
Plastic knife group holder
also suitable for wall mounting

K120/KE120 – K120S/KE120S

Cutters



Accessories for K120-KE120-K120S KE120S



653179
Smooth blade knife group
for cutter mixer 11.5 l



653299
Knurled knife group
for cutter mixer 11.5 l

650060



653538
Serrated blade knife group for meat
for cutter mixer 11.5 l (use
at speeds up to 1500 rpm)

650060
Microtoothed blade knife group
for cutter mixer 11.5 l



650073
11.5 l s/steel bowl
for cutter mixer K120S-KE120S



650059
Scraper for cutter mixer K120S and KE120S
use only with microtoothed blade knife group 650060



650044
Emulsion kit complete with:
scraper microtoothed blade knife group, plastic cover and seal only
for K120 and KE120



653017
S/steel mount with 4 wheels with brake
h=730 mm

K180/KE180 – K180S/KE180S

Cutters



**Accessories for
K180-KE180
K180S-KE180S**



653119
Smooth blade knife group
for cutter mixer 17.5 l



653120
Knurled knife group
for cutter mixer 17.5 l



653539
**Serrated blade knife group for
meat**
for cutter mixer 17.5 l (use
at speeds up to 1500 rpm)

650047
Microtoothed blade knife group
for cutter mixer 17.5 l



650074
17.5 l s/steel bowl
for cutter mixer K180S-KE180S



650046
**Scraper for cutter mixer K180S
and KE180S**



650045
**Emulsion kit complete with:
scraper**
microtoothed blade knife group,
plastic cover
and seal only for K180 and KE180



653017
**S/steel mount with 4 wheels with
brake**
h=730 mm

Speedy mixer - B3000

Hand mixers



**Accessories for
SPEEDY MIXER,
B3000, B2000**

OPRB64



OPR950
S/steel tube with blades
150 mm per Speedy Mixer

OPR951
S/steel tube with blades
200 mm per Speedy Mixer

OPRB64
S/steel tube with blades
250 mm for Speedy Mixer



650057
Whisk for Speedy Mixer
with variable speed



**Accessories for
Bermixer B3000
bayonet connection**

650134



650132
S/steel tube
with blades
353 mm per B3000 bayonet
connection

650133
S/steel tube
with blades
453 mm per B3000 bayonet
connection

650134
S/steel tube
with blades
553 mm per B3000 bayonet
connection

650135
S/steel tube
with blades
653 mm per B3000 bayonet
connection

653578
Reinforced s/steel whisk
for hand mixer B3000 bayonet
connection



653294
Mount for hand mixer B3000
to be used together with rail code
653292



653292
**Adjustable rails for containers/
pots**
diam. from 375 to 650 mm.
To be used together
with mount code 653294



0D6297
Plastic wall mount
for Bermixer and utensils

B3000

Hand mixers



Accessories for Bermixer B3000 clip connection

0D7069

**0D7068**

**S/steel tube
with blades**
353 mm for B3000 clip connection

0D7069

**S/steel tube
with blades**
453 mm for B3000 clip connection

0D7070

**S/steel tube
with blades**
553 mm for B3000 clip connection

0D7071

**S/steel tube
with blades**
653 mm for B3000 clip connection

0D7072

**0D7072**

Reinforced whisk for hand mixer
B3000 clip connection

0D7073

Whisk for hand mixer
B3000 clip connection

Accessories for Bermixer B2000

653264

**653313**

**S/steel tube
with blades**
352 mm for B2000

653264

**S/steel tube
with blades**
452 mm for B2000

653265

**S/steel tube
with blades**
552 mm for B2000

653274

**S/steel tube
with blades**
652 mm for B2000

653491

**653491**

Reinforced whisk for hand mixer
B2000

653489

Whisk for hand mixer
B2000

Emix

Planetary mixers



Accessories for Emix



653754
5 l s/steel bowl
only for Emix



653755
S/steel semi-spiral hook 5 l
(only for Emix)



653756
S/steel spatula
for Emix-DITOMIX-BE5



653757
S/steel whisk
for Emix-Ditomix-BE5



653043
Meat mincer 60 mm for machines with K-type accessory connection
(square connection 12mm).
Aluminium body complete with 1 s/ steel disc with holes diam. 6 mm



653044
Kit of 3 discs Ø holes 3- 4.5 - 8 mm for meat mincers



653610
Pasta kit with K-type connection complete with three accessories.
Sheeter (lasagne/puff pastry):
9 positions from 2.5 to 0.3 mm
Pasta cutter for tagliatelle: 6 mm
Pasta cutter for tagliolini: 1.5 mm



653611
Pasta accessory K connection for spaghetti 1.5 mm



0D6657
Pasta accessory K connection for lasagne/puff pastry 9 pos.
from 2.5 to 0.3 mm - PNC 650076

0D6658
Pasta accessory K connection for tagliatelle 6 mm - PNC 650062

0D6659
Pasta accessory K connection for tagliolini 1.5 mm - PNC 650075

Ditomix

Planetary mixers



**Accessories for
Ditomix 5**



653286
Aluminium flat hook
(only for DITOMIX5)



653508
5 l s/steel bowl
(only for DITOMIX5)



653756
S/steel spatula
for Emix-DITOMIX-BE5



653757
S/steel whisk
for Emix-DITOMIX-BE5

BE5

Planetary mixers



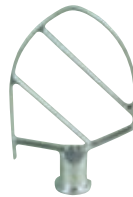
Accessories BE5 planetary 5 l



653295
5 l s/steel bowl
for BE5



653757
S/steel whisk
for Emix-DITOMIX-BE5



653756
S/steel spatula
for Emix-DITOMIX-BE5



653765
S/steel spiral hook
(only for BE5)



653781
Protection screen CLOSED
without BPA for BE5
without K connection



653782
Protection screen CLOSED
without BPA for BE5
with K connection



653043
Meat mincer 60 mm for
machines with
K-type accessory connection
(square connection 12mm).
Aluminium body complete with 1 s/
steel disc with holes diam. 6 mm.

653044
Kit of 3 discs Ø holes 3- 4.5 - 8
mm for meat mincers



653610
Pasta kit with K-type connection
complete with three accessories.
Sheeter (lasagne / puff pastry): 9
positions from 2.5 to 0.3 mm
Pasta cutter for tagliatelle: 6 mm.
Pasta cutter for tagliolini: 1.5 mm



653611
Pasta accessory K connection
for spaghetti 1.5 mm



0D6657
Pasta accessory K connection
for lasagne/puff pastry 9 pos.
from 2.5 to 0.3 mm - PNC 650076

0D6658
Pasta accessory K connection
for tagliatelle 6 mm - PNC 650062

0D6659
Pasta accessory K connection
for tagliolini 1.5 mm - PNC 650075

BE8

Planetary mixers



Accessories for BE8 planetary 8 l



653766
8 l s/steel bowl
for BE8



653769
S/steel whisk
for BE8



653768
S/steel spatula
for BE8



653767
S/steel spiral hook for BE8



653781
Protection screen CLOSED
without BPA for BE8
without K connection



653782
Protection screen CLOSED
without BPA for BE8
with K connection



653043
Meat mincer 60 mm for
machines with
K-type accessory connection
(square connection 12mm).
Aluminium body complete with 1 s/
steel disc with holes diam. 6 mm.



653610
Pasta kit with K-type connection
complete with three accessories.
Sheeter (lasagne / puff pastry): 9
positions from 2.5 to 0.3 mm
Pasta cutter for tagliatelle: 6 mm.
Pasta cutter for tagliolini: 1.5 mm



653611
Pasta accessory K connection
for spaghetti 1.5 mm



0D6657
Pasta accessory K connection
for lasagne/puff pastry 9 pos.
from 2.5 to 0.3 mm - PNC 650076



0D6658
Pasta accessory K connection
for tagliatelle 6 mm - PNC 650062



0D6659
Pasta accessory K connection
for tagliolini 1.5 mm - PNC 650075

XBM10-XBE10

Planetary mixers



**Accessories
for XBM10-XBE10
planetary 10 l**



653276
10 l s/steel bowl
for XBM10-XBE10



653269
S/steel whisk
for XBM10-XBE10



653267
Spatula
for XBM10-XBE10



653268
Hook
for XBM10-XBE10

XBM20 - XBE20 - XBB20

Planetary mixers



**Accessories for
XBM20-XBE20-XBB20
planetary 20 l**



650121
20 l s/steel bowl
for XBM20-XBE20-XBB20



653114
Hook
for XBM20-XBE20-XBB20



653116
Spatula
for XBM20-XBE20-XBB20

653254



653109
S/steel whisk
for XBM20-XBE20-XBB20

653254
Reinforced s/steel whisk
for XBM20-XBE20-XBB20



650122
**Reduction kit 10 l (bowl, hook,
spatula and whisk)**
for 20 l mixer XBM20 -XBE20-XBB20

0D7870
10 l s/steel bowl
for reduction kit 650122



0KQ278
Hook
for reduction kit 650122



0KQ277
Spatula
for reduction kit 650122



653434
Steel table with shelf
for 20 l planetary mixers
(except XBB20)

0H1017
S/steel whisk
for reduction kit 650122



653562
Trolley for 20/30 litre bowl
(cannot be used if the wheel kit
frame code 653552 is installed on
the XBs)



653552
Frame with 3 wheels for fixing
to 20/30/40 l mixers
(only XB models)

XBM30 - XBE30 - XBB30

Planetary mixers



Accessories for XBM30-XBE30-XBB30 planetary 30 l



650123
30 l s/steel bowl
for XBM30-XBE30-XBB30



653161
Hook
for XBM30-XBE30-XBB30



653165
Spatula
for XBM30-XBE30-XBB30

653253



653166
S/steel whisk
for XBM30-XBE30-XBB30

653253
Reinforced s/steel whisk
for XBM30-XBE30-XBB30

653562



653562
Trolley for 20/30 litre bowl
(cannot be used if the wheel kit frame code 653552 is installed on the XBs)

653552
Frame with 3 wheels for fixing
to 20/30/40 l mixers
(only XB models)



650124
Reduction kit 10 l (bowl, hook, spatula and whisk)
for mixer 30 l
XBM30-XBE30-XBB30



650125
Reduction kit 20 l (bowl, hook, spatula and whisk)
for 30 l mixer XBM30 -XBE30-XBB30



0D7871
10 l s/steel bowl
for reduction kit 650124

0KQ278
Hook
for reduction kit 650124

0KQ277
Spatula
for reduction kit 650124

0H1017
S/steel whisk
for reduction kit 650124



0D7813
20 l s/steel bowl
for reduction kit 650125

653114
Hook
for reduction kit 650125

653116
Spatula
for reduction kit 650125

653109
S/steel whisk
for reduction kit 650125

MB40 – MBE40

Planetary mixers



**Accessories
for MB40-MBE40
planetary 40 l**



650128
40 l s/steel bowl
for MB-MBE40



653092
Hook
for MB-MBE40



653093
Spatula
for MB-MBE40



653094
S/steel fine emulsion whisk
for MB-MBE40



653127
Reinforced s/steel whisk
for MB-MBE



650126
**Reduction kit 20 l (bowl, hook,
spatula and whisk)**
for 40 l mixer MB-MBE40



650186
Scraper
for 40 l bowl MB-MBE40



0D7872
20 l s/steel bowl
for reduction kit 650126

0KQ303
Hook
for reduction kit 650126

0KQ302
Spatula
for reduction kit 650126

0KJ061
S/steel whisk
for reduction kit 650126



653585
Trolley for 40/60/80 litre bowl
(cannot be used if the wheel kit
frame code 653552 is installed)

BMX60 – BMXE60 – XBE60

Planetary mixers



**Accessories for
BMX60
BMXE60
XBE60
planetary 60 l**



650129
60 l s/steel bowl
for BMX60-BMXE60-XBE60

653084



653084
S/steel spiral hook
for BMX60-BMXE60-XBE60



653083
Spatula
for BMX60-BMXE60-XBE60

653481
Reinforced s/steel spiral hook
for BMX60-BMXE60-XBE60

653086



653086
S/steel whisk
for BMX60-BMXE60-XBE60



653442
Scraper for 60 l bowl
BMX60-BMXE60-XBE60

653097
Reinforced s/steel whisk
for BMX60-BMXE60-XBE60



650127
**Reduction kit 40 l (bowl, hook,
spatula and whisk)**
for 60/80 l mixer BMX60-BMXE60-
XBE60-BMXE80-XBE80



653585
Trolley for 40/60/80 litre bowl
(cannot be used if the wheel kit
frame code 653552 is installed)

0D7798
40 l s/steel bowl
for reduction kit 650127



0D0463
Hook
for reduction kit 650127

0D0462
Spatula
for reduction kit 650127

0H1010
S/steel whisk
for reduction kit 650127

BMXE80 – XBE80

Planetary mixers



Accessories for BMXE80-XBE80 planetary 80 l



650130
80 l s/steel bowl
for BMXE80-XBE80

653585
Trolley for 40/60/80 litre bowl
(cannot be used
if the wheel kit frame code 653552
is installed)

653133



653133
S/steel spiral hook for
BMXE80-XBE80

653482
Reinforced s/steel spiral hook
for BMXE80-XBE80



653135
Spatula for BMXE80-XBE80



653134
S/steel whisk
for BMXE80-XBE80



653443
Scraper for 60 l bowl
BMX60-BMXE60-XBE60



650127
Reduction kit 40 l
(bowl, hook, spatula and whisk)
for 60/80 l mixer BMX60
-BMXE60-XBE60-BMXE80-XBE80

0D7798
40 l s/steel bowl
for reduction kit 650127

0D0463
Hook
for reduction kit 650127

0D0462
Spatula
for reduction kit 650127

0H1010
S/steel whisk
for reduction kit 650127



650131
Reduction kit 60 l
(bowl, hook, spatula and whisk)
for 80 l mixer
BMXE80-XBE80

650129
60 l s/steel bowl
for reduction kit 650131

653084
Hook
for reduction kit 650131

653083
Spatula
for reduction kit 650131

653086
S/steel whisk
for reduction kit 650131



Planetary mixers



Accessories for H connections



653720

Meat mincer 70 mm in aluminium (MMH70) with H-type connection

653724

Meat mincer 82 mm in aluminium (MMH82) with H-type connection

complete with loading hopper and meat pusher for combining with a grinding kit of choice

653721

"Enterprise" grinding kit in aluminium for meat mincer 70 mm



653726

"Enterprise" grinding kit in aluminium for meat mincer 82 mm

with H-type connection including 3 s/steel plates
hole Ø 4.5 - 6 - 8 mm



653722

"Enterprise" grinding kit in s/steel for meat mincer 70 mm

653725

"Enterprise" grinding kit in s/steel for meat mincer 82 mm

with H-type connection including knife and 3 s/steel plates
hole Ø 4.5 - 6 - 8 mm



653723

"1/2 Hunger" grinding kit in s/steel for meat mincer 70 mm

653727

"1/2 Hunger" grinding kit in s/steel for meat mincer 82 mm

with H-type connection including knife and 3 s/steel plates
hole Ø 4.5 - 6 - 8 mm



653062

Blade sharpener H-type connection model AF16
with very fine grit abrasive disc and Ø 160 mm (not suitable for XBE10AS).



653187

Puree/food strainer with H-type connection model P200
complete with 3 s/steel sieves
1.5-3-6 mm



653225

Vegetable slicer with H-type connection model CX21D
complete with ejector (without discs) disconnectable drive

T5S-T5E/T5M-T8E/T8M

Vegetable peelers



**Accessories for T5S
vegetable peeler 5 kg**



653182
Abrasive disc for T5S



653183
Knife disc for T5S



653057
Disc with wash-brushes for T5S



653784
**Filter-table with top for
vegetable peelers 5/10/15 kg**
complete with:
- pullout shelf with handle and
scrap container with filter



**Accessories for
T5E-T5M vegetable
peeler 5 kg**



653316
Abrasive disc
for T5E-T5M-T8E-T8M



653486
Mussel cleaner disc
for T5E-T5M-T8E-T8M

653314



653314
Filter basket only for T5E-T5M

653514



653514
**Filter basket for potato peeler
T8E-T8M**
and mussel cleaner for
T5E-T5M-T8E-T8M

T5S-T5E/T5M-T8E/T8M

Vegetable peelers



653315
Salad spinner basket
only for T5E



653496
S/steel stand for vegetable
peelers and mussel cleaners
T5E-T5M-T8E-T8M



653515
Kit for vegetable peelers
on mussel cleaner T5M
Includes bowl with abrasive disc



653316
Abrasive disc
for T5E-T5M-T8E-T8M



**Accessories for
T8E-T8M vegetable
peeler 8 kg**



653486
Mussel cleaner disc
for T5E-T5M-T8E-T8M



653514
Filter basket for potato peeler
and mussel cleaner T8E-T8M
for T5E-T5M-T8E-T8M



653495
Salad spinner basket
only for T8E



653516
Kit for vegetable peelers
on mussel cleaner T8M
Includes bowl with abrasive disc



T10E-T15E

Vegetable peelers



**Accessories T10E-T15E
vegetable peelers
10 and 15 kg**



653203
Abrasive disc for T10E-T15E



653205
Abrasive disc
for large onions T10E-T15E



653184
Abrasive disc
for onions, shallots and garlic
(not suitable for models with
abrasive cylinder) T10E-T15E



653204
Knife disc for T10E-T15E
(not suitable for models with
abrasive cylinder)



653058
Vegetable washi/brush plate
T10E-T15E



653208
Basket for spinner
only for T10E



653209
Basket for spinner
only for T15E



653784
Filter-table with top for
vegetable peelers 5/10/15 kg
complete with:
- pullout shelf with handle
and scrap container with filter

Ti25-T25E

Vegetable peelers



**Accessories TI25-T25E
vegetable peeler 25 kg**



653506
Abrasive disc for TI25-T25E



653302
Tray with trolley
with handle and filter
only for T25E



653509
Device to facilitate
the dilution of waste
only for T25E



Accessories & Consumables

Detergents

Index

Dishwashing detergents.....	152
Oven detergents	153
Delimer.....	153
Cooking plates detergents	154
Universal detergents.....	155
lagoon® detergents.....	156
myPRO Cleanstar detergents.....	160

Dishwashing detergents



C11 Detergent for dishwashers

- Ideal for all types of crockery: ceramic, porcelain, glass, crystal and metal
- It is very functional for removing caffeine and theine deposits from cups and teapots.
- Its delicate aroma helps minimize the unpleasant odour which can sometimes be found in dishwashers.
- Highly recommended for restaurants preparing fish and sea food.
- Particularly suitable for hard and medium hard water

Code	Package	Compatible with
OS2092	one pack of 2 cans of 5lt.	glasswasher, undercounter,
OS2281	1 can of 20lt.	front loading, hood type, rack type



C13 ECO Detergent for dishwashers

- Ideal for all type of crockery: ceramic, porcelain, glass, crystal and metals
- It's special "Eco-Formula" free of phosphates, EDTA and NTA makes the product ecologically friendly with a very low environmental impact
- Very efficient in case of dried food residues on all kind of dishes
- Particularly suitable for soft water and recommended for dishwashing systems with osmosis or demineralisers

Code	Package	Compatible with
OS2093	one pack of 2 cans of 5lt.	glasswasher, undercounter,
OS2280	1 can of 20lt.	front loading, hood type, rack type



C12 Rinse aid for dishwashers

- Brightener additive for crockery rinsing in the dishwasher
- Guarantees sparkling clean and dry crockery
- Use of vegetable origin surfactants
- Ideal for ceramics, porcelain, glass and crystal
- Specific formula for hard water and medium hard waters

Code	Package	Compatible with
OS2094	one pack of 2 cans of 5lt.	glasswasher, undercounter, front loading, hood type, rack type



C14 Rinse aid Plus for dishwashers

- Rinse additive for crockery rinsing in the dishwashers
- Super concentrated formula recommended for soft water conditions
- Offers a perfect drying without stains or any water trace, therefore highly recommended for glasses
- Use of vegetable origin surfactants
- Ideal for dishes in glass, crystal, ceramics, porcelain

Code	Package	Compatible with
OS2095	one pack of 2 cans of 5lt.	glasswasher, undercounter, front loading, hood type, rack type

Oven detergents



C20 Extra Strong Detergent for ovens

- ▶ Detergent for ovens with automatic washing system
- ▶ Tested and validated by Electrolux Labs for best appliance performance, compatibility and durability
- ▶ High degreasing power for ovens with integrated washing cycle
- ▶ Environmental friendly chemical formula - EDTA free

Code	Package	Compatible with
OS2282	one pack of 2 cans of 5 lt.	ovens with automatic cleaning system



C21 Extra Strong Rinse aid for ovens

- ▶ Rinse aid for ovens with automatic washing system
- ▶ Tested and validated by Electrolux Labs for best appliance performance, compatibility and durability
- ▶ Intensively tested and validated by Electrolux Labs for best appliance performance, compatibility and durability
- ▶ Quick drying and perfect shining cavity for ovens with integrated washing cycle
- ▶ Environmental friendly Eco product by use of vegetable origin surfactants

Code	Package	Compatible with
OS2283	one pack of 2 cans of 5 lt.	ovens with automatic cleaning system

Delimer



Extra LimeAway

- ▶ Delimer that effectively removes the deposits of limestone of washing equipment and boilers
- ▶ The regular use of Extra LimeAway maintains the washing performances of the equipment efficient over the time
- ▶ The strongly concentrated chemical formula of Extra LimeAway eliminates deposits of stubborn limestone from the washing arms, from the utensils and in general from the kitchen equipment. Also indicated for soaking.

Code	Package	Compatible with
OS1196	one pack of 4 cans of 5lt.	boilers and dishwashing equipment

Cooking plates detergents



C40 Degreaser for hot surfaces

- ▶ suitable for cleaning plates and grids with high temperature surfaces (max 175°C)
- ▶ Practical nozzle and spraying unit included

Code	Package
0S1841	1 pack of six 1lt. bottles



C41 RAPID GREASE for SpeedDelight

- ▶ for cleaning of SpeedDelight hot plates (max 175°C)
- ▶ Practical nozzle and spraying unit included
- ▶ sprayer 0S2331 included

Code	Package
0S2292	1 pack of six 1lt. bottles



Sprayer

for C41 RAPID GREASE with extension

Code	Description
0S2331	Sprayer for C41 RAPID GREASE with extension

Universal detergents



Super Clean

Keep your washing machine as clean and fresh as new. Constant low temperature washing and the increasing use of liquid detergents (enzyme based) can cause mould and gelatinous dirt to build up in the door seal, pipes and drum. They block up hoses, cause a bad odour in the washing machine and may leave deposits on your laundry. This kit removes all residuals, leaving all parts of your washing machine perfectly clean and maintaining optimal cleaning conditions.

Code	Part Number	Package
0W1X5U	9029792786	2 treatments (2x5 g + 2x125 g)



Steel Care

Stainless steel spray cleaner. Fingerprint proof cleaner for all stainless steel surfaces in your household. This product cleans and protects surfaces such as hobs, cooker hoods, stainless steel doors, sinks and fridges without scratching. The no-rinse formula is great for removing stains and finger marks.

Code	Part Number	Package
0W1X5S	9029792307	250 ml



Universal Descaler – for multi-use

Removes limescale to keep your washing machine working like new. It is environmental friendly: removing limescale build-up will reduce the power consumption of your appliance. This easy to use formula is ideal for hard water areas.

Code	Part Number	Package
0W1X5V	9029792984	1 L

lagoon® detergents

Fast, easy and green, lagoon® Advanced Care represents avant-garde professional wet-cleaning. Being a waterbased cleaning technique, it operates with simplicity of solvent-based cleaning processes but in an eco-friendly way.



lagoon® Sensitive Detergent

Detergent for Wool & Silk. Detergent for use in professional wet cleaning, with the appropriate Electrolux lagoon® wet cleaning programs and together with lagoon® Sensitive Conditioner.

Code	Part Number	Label*	Package
0W1Y92	432730598	A	10 lt.
0W1Y91	432730597	A	20 lt.
0W22SG	432731002	B	10 lt.
0W22SF	432731001	B	20 lt.



lagoon® Sensitive Conditioner

Conditioner for Wool & Silk. Conditioner for use in professional wet cleaning, with the appropriate Electrolux lagoon® wet cleaning programs and together with lagoon® Sensitive Detergent.

Code	Part Number	Label*	Package
0W1Y94	432730600	A	10 lt.
0W1Y93	432730599	A	20 lt.
0W22SJ	432731004	B	10 lt.
0W22SH	432731003	B	20 lt.



lagoon® Delicate 2 in 1

Detergent for Mixed Fibers. Detergent for use in professional wet cleaning, with the appropriate Electrolux lagoon® wet cleaning programs.

Code	Part Number	Label*	Package
0W1Y96	432730602	A	10 lt.
0W1Y95	432730601	A	20 lt.
0W22SL	432731006	B	10 lt.
0W22SK	432731005	B	20 lt.

***Label A:** GB, ES, SE, FR, PT, DK, DE, NL, IT, PL, FI

***Label B:** GB, SE, HR, SK, BG, HU, SL, CZ, RO, TR, GR, RU, UA

lagoon® detergents



lagoon® Pre-treatment

Universal mild pre-brushing agent for use in professional wet cleaning. Can be applied as pre-treatment on any type of fibers.

Code	Part Number	Label*	Package
0W1Y97	432730603	A	3 lt.
0W22SM	432731007	B	3 lt.



lagoon® Grease Remover

Degreasing agent for use in professional wet cleaning. To be applied as pre-treatment on stains caused by waxes, polishes, oils, greases and makeup.

Code	Part Number	Label*	Package
0W1Y99	432730605	A	1 lt.
0W22SP	432731009	B	1 lt.



lagoon® Ink Remover

Pre-spotting agent for use in professional wet cleaning. To be applied as pre-treatment on synthetic stains, stains caused by inks, adhesives, lacquers, synthetic paints and tar.

Code	Part Number	Label*	Package
0W1Y9A	432730606	A	1 lt.
0W22SR	432731010	B	1 lt.



lagoon® Protein Stain Remover

Pre-spotting agent for use in professional wet cleaning. To be applied as pre-treatment stains caused by blood, egg, milk, vomit and urine.

Code	Part Number	Label*	Package
0W22U0	432730898	A	1 lt.
0W22U2	432731011	B	1 lt.



lagoon® Tannin Stain Remover

Pre-spotting agent for use in professional wet cleaning. To be applied as pre-treatment stains caused by fruits, coffee, tea, red wine and grass.

Code	Part Number	Label*	Package
0W22U1	432730899	A	1 lt.
0W22U3	432731012	B	1 lt.

*Label A: GB, ES, SE, FR, PT, DK, DE, NL, IT, PL, FI

*Label B: GB, SE, HR, SK, BG, HU, SL, CZ, RO, TR, GR, RU, UA

lagoon® detergents



AC Detergent Prewet

Pre-treatment detergent suitable to remove grease and/or oil from machine-washed garments, together with specific cleaning products.

Code	Part Number	Package
0W1Y47	432730592	10 Kg



AC Detergent WET1

Product specially designed to prevent felting of wool and wool mixture garments during machine washing and during drying. Specially designed to avoid the formation of creases.

Code	Part Number	Package
0W1Y45	432730590	25 Kg



AC Detergent WET2

Liquid detergent for wool and wool mix garments, formulated for delicate washes at low temperatures without altering the physical and chemical characteristics of the fiber, thus leaving the tonality of the colour unaltered.

Code	Part Number	Package
0W1Y43	432730588	25 Kg



AC Superconcentrated size WET3

General use finishing product for various types of natural and synthetic fibers that facilitates subsequent ironing and gives a specific feeling of fluidity.

Code	Part Number	Package
0W1Y44	432730589	25 Kg



AC Softener WET4

Efficient fabric softener for wool mixture garments with a nourishing action on natural fibers.

Code	Part Number	Package
0W1Y46	432730591	25 Kg

lagoon® detergents



WET 2.2 lagoon® Detergent

Efficient fabric softener for wool mixture garments with a nourishing action on natural fibers.

Code	Part Number	Package
0W1Y48	432730593	25 Kg



WET 3.2 lagoon® Conditioner

General use finishing product for various types of natural and synthetic fibers that facilitates subsequent ironing and gives a specific feeling of fluidity.

Code	Part Number	Package
0W1Y49	432730594	25 Kg

myPRO Cleanstar detergents

The Cleanstar detergents are developed with your business and the environment in mind. For best wash results use the product that matches your need.



Cleanstar Wash Powder

Enzymatic washing powder. Thanks to its enhanced formulation that combines surfactants and active oxygen, Cleanstar Wash Powder removes the most stubborn stains.

Code	Part Number	Package
0W21S2	432730881	8 Kg



Cleanstar Green Liquid

Ecological liquid washing detergent. Biodegradable, Cleanstar Green Liquid is an innovative detergent containing surfactants made from vegetable materials; it removes stains efficiently while preserving colours and being gentle to the fibers.

Code	Part Number	Package
0W21T6	432730882	2 x 5 lt.



Cleanstar Wash Liquid

Concentrated liquid washing detergent. The 3-in-1 composition of Cleanstar Wash Liquid effectively removes stains and preserves the colours of the garment. It may also be used as a pre-treatment.

Code	Part Number	Package
0W21T8	432730884	2 x 5 lt.



Cleanstar Gentle Wash

Liquid detergent for delicate garments. With its formulation derived from vegetable raw material, Cleanstar Gentle Wash gently cleans delicate garments restoring their original softness.

Code	Part Number	Package
0W21T7	432730883	2 x 5 lt.

myPRO Cleanstar detergents



Cleanstar Soft Touch

Concentrated washing softener. Cleanstar Soft Touch restores elasticity and softness to the fibers of your garments; it makes ironing easier and prevents buildup of static electricity.

Code	Part Number	Package
0W21T9	432730885	2 x 5 lt.



Cleanstar Magic White

Powdered bleach. Already active at low temperature, Cleanstar Magic White removes stains and whitens your garments without damaging them.

Code	Part Number	Package
0W21TA	432730886	1 Kg



Cleanstar Sample Box

The Cleanstar Sample Box includes: Cleanstar Wash Powder 0.8 Kg, Cleanstar Wash Liquid 1 L, Cleanstar Soft Touch 1 L, Cleanstar Gentle Wash 1 L.

Code	Part Number	Package
0W21ZW	432730887	0.8 Kg + 3 x 1 lt.



Accessories & Consumables

Laundry

Index

Accessories for garment finishing FC48	164
myPRO accessories	165
myPROzip accessories	166
Consumables	167
Auxiliaries	170
Accessories	173
Installation	175

Accessories for garment finishing FC48

Get the outstanding results for your garments thanks to specialized accessories that are gentle on fine textiles for a premium result.

**Included in Wetcleaning kit:**

Clip Jacket & Trousers 16 pcs (74015002)

Sleeve Extend 16 pcs (74015001)

Hanger Padding 32 pcs (3310016)

Code	Part Number	Description
0W0D8H	33100110	Coat Hanger
0W1Y3A	74015002	Clip Jacket & Trousers
0W1Y39	74015001	Sleeve Extend
0W06B0	33100164	Hanger Padding
0W1NAH	55010854	Complete Wetcleaning kit

myPRO accessories

Selected accessories to ease the laundry process and keep the laundry area neat and fresh at all times.



Stacking Kit

This stacking kit enables you to safely and firmly stack the dryer on top of the washing machine, giving you extra valuable floor space.

Fits myPRO and myPROzip washing machines WE170V & WE170P and myPRO dryer TE1120

Code	Part Number	WxDxH (mm)
0W21ZG	432730871	600 x 600 x 65



Pedestal

This pedestal is suitable for washing machines and tumble dryers. By raising your appliance it makes loading and unloading laundry easier and more comfortable. **Fits myPRO and myPROzip** equipment.

Code	Part Number	WxDxH (mm)
0W21ZH	432730872	600 x 546,7 x 315,4



Anti-vibration Pads

These rubber pads absorb the vibrations from your appliance and keep it firmly on the floor, protecting it from scratches. Suitable for washers, dryers and other appliances. For washing machines.

Code	Part Number	WxDxH (mm)
0W21DM	9029795243	Ø 45 mm



Large Drip Tray

Minimize the risk of water damage on your floors and fittings with this drip tray. Often moisture and water damage starts with a small water leakage. The innovative design of this product runs collected water to the front of the tray so that the leak can be spotted in time. For washing machines.

Code	Part Number	WxDxH (mm)
0W21DL	9029793339	600 x 600



Liquid Detergent Connection

This stacking kit enables you to safely and firmly stack the dryer on top of the washing machine, giving you extra valuable floor space. Fits myPRO washing machines WE170V & WE170P and myPRO dryer TE1120

Code	Part Number	WxDxH (mm)
0W21PX	472997001	182 x 180 x 90

myPROzip accessories

Selected accessories to ease the laundry process and keep the laundry area neat and fresh at all times.



Smart Professional Coin Box Duo

Coin box with two coin meters for myPROzip washing machines and tumble dryers. Select any combination of two myPROzip machines (washer/washer, washer/dryer or dryer/dryer), and assign a coin meter to each machine to allow for payment of washing or drying cycle. Programming of price to be done on myPROzip washing machine or tumble dryer display.

Code	Part Number	WxDxH (mm)
0W1172	432731079	140 x 340 x 840



Smart Professional Coin Box Solo

Coin box with one coin meter for myPROzip washing machine and tumble dryer. Predisposed for installation of a second coin meter (model CoinMeter). Coin box allowing for payment of washing or drying cycle. Programming of price to be done on myPROzip washing machine or tumble dryer display.

Code	Part Number	WxDxH (mm)
0W1171	432731078	116 x 208 x 280



Smart Professional CoinMeter

Coin meter for retrofit on myPROzip CoinBoxSolo accessory, allowing for addition of second coin meter in case a second machine (washer or dryer) is installed.

Code	Part Number	WxDxH (mm)
0W1173	432731080	208 x 280 x 116



Smart Professional ExternalPay Harness

Harness for connection of myPROzip washing machine and tumble dryer to external payment systems (coin boxes or central payment systems).

Code	Part Number	Length (mm)
0W1186	432731081	1000



Visit the myPRO website to discover all related accessories and consumables in the webshop
www.electrolux.com/myPRO

Consumables

Maintain and improve your product's life by using Electrolux original consumables and accessories. Cleaning products are developed with the same high level of expertise we invest in our professional, white goods and household appliances.



Super Clean

Keep your washing machine as clean and fresh as new. Constant low temperature washing and the increasing use of liquid detergents (enzyme based) can cause mould and gelatinous dirt to build up in the door seal, pipes and drum. They block up hoses, cause a bad odour in the washing machine and may leave deposits on your laundry. This kit removes all residuals, leaving all parts of your washing machine perfectly clean and maintaining optimal cleaning conditions.

Code	Part Number	Package
0W1X5U	9029792786	2 treatments (2x5 g + 2x125 g)



Descaler – for washing machines

Extra Strong Descaler. Removes limescale to keep your washing machine working like new. The descaler is ideal for hard water areas, as it removes limescale deposits which extends the lifetime of your appliance and prevents the build-up of stale odours. It delivers optimum performance and reduces power consumption: keeping pipes and drum clean ensures the best possible wash results and the minimum electricity usage every cycle.

Code	Part Number	Package
0W1X5R	9029792257	200 g



Universal Descaler – for multi-use

Removes limescale to keep your washing machine working like new. It is environmental friendly: removing limescale build-up will reduce the power consumption of your appliance. This easy to use formula is ideal for hard water areas.

Code	Part Number	Package
0W1X5V	9029792984	1 lt.



Steel Care

Stainless steel cream cleaner. Extra-gentle cleaner for all stainless steel surfaces in your household. This product cleans and protects all surfaces without scratching. The no-rinse formula is great for removing stains and finger marks.

Code	Part Number	Package
0W1X5P	9029792232	250 ml

Consumables



Steel Care

Stainless steel spray cleaner. Fingerprint proof cleaner for all stainless steel surfaces in your household. This product cleans and protects surfaces such as hobs, cooker hoods, stainless steel doors, sinks and fridges without scratching. The no-rinse formula is great for removing stains and finger marks.

Code	Part Number	Package
0W1X5S	9029792232	250 ml



Sticker with Machine numbers

The machine numbers sticker help you to identify easily your machines when you for example use a central payment- or a booking system.

Code	Part Nr.	Description	Dim. (mm)
0W1X68	471467461	Numbers 1 to 5	95 x 95
0W1X69	471467462	Numbers 6 to 10	95 x 95
0W1X6A	471467463	Numbers 11 to 15	95 x 95
0W1X6B	471467464	Numbers 16 to 20	95 x 95
0W1X83	471467466	Numbers 21 to 25	95 x 95
0W1X84	471467467	Numbers 26 to 30	95 x 95
0W1XL2	471467471	Numbers 31 to 35	95 x 95
0W1XL3	471467472	Numbers 36 to 40	95 x 95
0W1XL4	471467473	Numbers 41 to 45	95 x 95
0W1XL5	471467474	Numbers 46 to 50	95 x 95

Protective tape

To protect your equipment from being damaged by trolleys.

Code	Part Number	Dimension (mm)
0W0EU4	432213401	50 x 860



Water Soluble Bags

Water soluble laundry bags are used to meet the requirements for handling contaminated and infected textiles through safe isolation, transportation and disinfection. Proper management ensures that patients and staff are not exposed to unnecessary risks of infection. Available in 3 sizes - Small, Medium and Large.

Code	Part Nr.	Description	Dim. (mm)
0W1XXU	432730582	Small	660 x 840 1 roll = 25 bags
0W1XXV	432730583	Medium	710 x 990 1 roll = 25 bags
0W1XXW	432730584	Large	910 x 990 1 roll = 25 bags

Consumables



Washing bag for delicates

These bags protect your delicates during the washing cycle. Avoiding the risk of wear and tear, stains and holes due to the friction of the laundry. It is also useful to keep small items together, e.g. baby socks and similar.

Code	Part Number	Dimension (mm)
0W21DJ	9029792877	400 x 600 + 300 x 400



Dryer Balls

The dryer balls use specially designed nodes to physically break down the stiffness created by water drying in fabric, thus softening laundry without the introduction of toxic chemicals.

The two balls have different tensile strengths (one is harder than the other) with different shaped softening nodes. Square nodes compress and soften fabric; round nodes relax fibers to reduce hardness. They work in combination to lift and separate the laundry whilst tumble drying. They also retain the heat and transfer it to the clothes as they tumble, aiding the drying process. For tumble dryers.

Code	Part Number	Quantity
0W21DH	9029791861	2 pieces



Soft Care

These disposable sheets help to soften and scent your laundry, and make it easier to iron. They are easy to use: simply pop a sheet in the dryer with each load. For tumble dryers.

Code	Part Number	Quantity
0W21DK	9029793198	30 pieces

Auxiliaries

Ergonomic laundry trolleys, garment racks and other equipment that fits into the real estate laundries, laundries, hospitals, nursing homes, hotels, spas, etc.

* The helical basket of the TRP2 and TRP4 Super facilitates the loading and unloading of the washer and dryer. The design also ensures that the trolley will come close to the equipment, so that the laundry does not end up on the floor. Frame in galvanized steel; basket in plastic coated wire.



*Trolley TRP2 – 80 liters

The handle height is adjusted so that one can stand behind the cart and load and unload. Delivered folded.

Code	Part nr.	Description	WxDxH (mm)
0W1XX2	432730552	Trolley TRP2	670 x 440
0W0FU5	432730287	Wheels	Ø 240



*Trolley TRP4 Super – 80 liters

Code	Part nr.	Description	WxDxH (mm)
0W1XX3	432730553	Trolley TRP4 Super	670 x 440
0W0FUK	432730300	Castor	Ø 70
0W1XCC	432730544	Basket	580 x 470
0W0FXC	432730439	Hooks	4 pieces



Trolley NV-21 – 240 liters

Code	Part nr.	Description	WxDxH (mm)
0W1XX4	432730554	Trolley NV-21	800 x 600 x 900
0W1XX1	432730545	Castor	Ø100



Round Trolley

Frame in galvanized steel; basket in plastic material.

Code	Part nr.	Description	WxDxH (mm)
0W7072	489670265	Round Trolley	Ø440 x H780
0W1CK7	489670324	Castor	Ø50
0W1XX7	489670260	Basket	Ø440

* Foldable trolley with bag made out of strong coated fabrics for storage of laundry.



*Canvas Trolley RV-73 – 80 liters

Code	Part nr.	Description	WxDxH (mm)
0W1XX5	432730555	Canvas Trolley RV-73	670 x 560 x 780
0W1Y24	432730542	Bag	670 x 560 x 400
0W1Y26	432730546	Wheel	Ø75



*Canvas Trolley RV-74 – 200 liters

Code	Part nr.	Description	WxDxH (mm)
0W1XFY	432730556	Canvas Trolley RV-74	1100 x 560 x 780
0W1Y25	432730543	Bag	1100 x 560 x 400
0W1Y26	432730546	Wheel	Ø75

* Stainless steel trolleys are an ergonomic tool that facilitates the handling of the laundry and helps to prevent repetitive strain injuries.



*Stainless Steel Trolley BV-220 / BV-131 – 220 liters

Code	Part nr.	Description	WxDxH (mm)
0W1Y2F	432730562	Stainless Steel Trolley BV-220 / BV-131	800 x 600 x 650
0W1XF1	432730551	Castor	Ø125



*Stainless Steel Trolley BV-141, elevated – 220 liters

Code	Part nr.	Description	WxDxH (mm)
0W1Y2G	432730563	Stainless Steel Trolley BV-141, elevated	800 x 600 x 890
0W1XF1	432730551	Castor	Ø125



*Spring Trolley – 229 liters

A trolley with load leveler allows the load to be constantly kept at the highest working level.

Code	Part nr.	Description	WxDxH (mm)
0W1Y2B	432730557	Spring Trolley	1030 x 450 x 800
0W1Y27	432730547	Swivel Castor	Ø125
0W1Y28	432730548	Castor	Ø125

Auxiliaries



Garment Rack (Flexible)

An all-round rack that fits into many fields and businesses: laundries, shops, tailors, bridal and party dress shops, theaters, public events and more. Foldable rack.

Code	Part nr.	Description	WxDxH (mm)
0W1Y2Y	432730555	Garment Rack (Flexible)	1500-2000 x 1600



Bulk Transport Cart HV-52

A cart used for storage and in-house transport of lighter goods like shirts and other garments, terry cloth, bed linen and blankets. One long side is open for easy access. The other sides have round bars. In white epoxy paint.

Code	Part nr.	Description	WxDxH (mm)
0W1Y2C	432730558	Bulk Transport Cart HV-52	L1150 x W550 x H1520 mm, 3 shelves 500 x 1000 mm
0W1XX0	432730581	Castor	Ø100 mm



Container cart Flex RT-511

A modern, flexible, small, easy to drive cart for a variety of uses. The small size makes it especially suitable in lifts, trucks and other confined spaces. Shelves can also be used to cover the open front of the trolley. In polished chromated zinc.

Code	Part nr.	Description	WxDxH (mm)
0W1Y2D	432730559	Container cart Flex RT-511	800 x 600 x 1570
0W1XZ2	432730560	Shelf	
0W1Y2E	432730561	Cover (blue)	
0W1Y2A	432730550	Castor	Ø125
0W1Y29	432730549	Swivel castor	Ø125



Working Table

Working tables with top in melamine. Available in 3 different lengths.

Code	Part nr.	Description	WxDxH (mm)
0W1Y2H	432730564	Working Table	1000 x 700 x 850
0W1Y2J	432730565	Working Table	1500 x 700 x 850
0W1Y2K	432730566	Working Table	2000 x 700 x 850



Chair

Adjustable height.

Code	Part nr.	Description
0W1Y2L	432730567	Chair

Accessories

Complete the range and facilitate the working experience by choosing the right accessories for your business, machine and/or garments.



Ironing table, free standing

Code	Part nr.	Description	WxDxH (mm)
0W23GL	432731033	Ironing table, free standing	400 x 1500
0W0TL2	471668381	Cloth with foam	420 x 1520



Ironing table, wall mounted

Code	Part nr.	Description	WxDxH (mm)
0W23GM	432731034	Ironing table, free standing	370 x 1270
0W0V6D	471680362	Cloth with foam	480 x 1300
0W23GN	432731035	Ironing table, free standing	400 x 900
0W0V6D	471680362	Cloth with foam	480 x 1300



Water spray gun

Complete with hose and suspension spring.

Code	Part nr.	Description
0W23GP	432731036	Water spray gun



Wall-mounted clothes hanger rack

In galvanized steel. Foldable.

Code	Part nr.	Description	Length (mm)
0W1Y2U	432730574	Wall-mounted clothes hanger rack	420

Accessories



Sheets tensioner

A sheets tensioner makes it easy for you to stretch sheets on your own. A basket that facilitates the folding of the sheets can be placed under the sheets tensioner. The sheets tensioners should be mounted on the wall, about 1.3 meters above the floor.

Code	Part nr.	Description	WxDxH (mm)
0W1Y2R	432730571	Sheet tensioner	600
0W1Y2S	432730572	Basket	580 x 350 x 300



Clothes Line

Complete clothes line installation kit. For installation refer to the document 471153097.

Code	Part number	Description	WxDxH (mm)
0W1Y2T	432730573	Clothes Line	
0W0WEM	471688066	Armature	
0W0B75	TEE0000353990	Wire	Ø5 mm, 90 m
0W0B76	TEE0000353993	Spacer	Kit of 50 spacers
0W0B7A	TEE0000418203	Bracket	
0W0B79	TEE0000418202	Bracket	
0W0B78	TEE0000418201	Bracket	
0W0B71	TEE0000301356	Turnbuckle	
0W0B72	TEE0000301375	Heat shrink tubing	
0W0B77	TEE0000353996	Wire lock	
0W0B7C	TEE0000418206	Bracket for line elevation, left hand side	Kit of 2 brackets
0W0B7B	TEE0000418205	Bracket for line elevation, right hand side	Kit of 2 brackets



Holder for garbage bag

Suitable environmental friendly paper bags. Should be mounted on the wall.

Code	Part nr.	Description	WxDxH (mm)
0W1Y2V	432730575	Holder for garbage bag	450 x 425 x 360



Brush with chain

Brush with chain for easy cleaning of lint filters.

Code	Part nr.	Description	WxDxH (mm)
0HM803	487162301	Brush with chain	850

Installation

The fluff collector's task is to separate lint from wastewater. It is placed behind the washer and acts as a filter to prevent the drainpipe from becoming clogged, which could lead to flooding in the laundry room.

The fluff collectors are made in stainless steel for highest durability, and have removable strainer plates for easy cleaning. Available in 25, 45, 75 and 100 liters. The size of the collector should be in line with the washer capacity. Suitable for models: W555H, W465H, W565H, W475H, W575H, W4105H, W5105H, W4130H, W5130H, W575N, W5105N, W5130N, W475S, W575S, W4105S, W5105S, W4130S, W5130S.



Fluff Collector – 25 liters

Code	Part nr.	Description	WxDxH (mm)
0W22EX	432730894	Fluff Collector – 25 liters	615 x 280 x 165, Ø32 mm
0W1X3Y	432183314	Strainer Plate	480 x 1300 mm



Fluff Collector, Complete – 25 liters

Code	Part nr.	Description	WxDxH (mm)
0W22EY	432730895	Fluff Collector – 25 liters	615 x 280 x 165, Ø32 mm
0W1X3Y	432183314	Strainer Plate	
0W1XWG	432183319	Cover	400 x 900 mm
0E2691	438504001	Drain Hose	480 x 1300 mm
0W0HHN	438524501	Drain Hose	
0W5953	471861305	Tube	
0W1TPW	736284051	Hose Clamp 65	



Fluff Collector – 45 liters

Code	Part nr.	Description	WxDxH (mm)
0W22EZ	432730896	Fluff Collector – 45 liters	680 x 345 x 220, Ø50
0W1X3X	432183214	Strainer Plate	



Fluff Collector – 75 liters

Code	Part nr.	Description	WxDxH (mm)
0W22F0	432730897	Fluff Collector – 75 liters	820 x 480 x 215, Ø50
0W1X3W	432183114	Strainer Plate	

Installation



Fluff Collector – 100 liters

Code	Part nr.	Description	WxDxH (mm)
0W22EW	432730893	Fluff Collector – 100 liters	970 x 480 x 220, Ø75
0W1X3Z	432183414	Strainer Plate	



Drainage Nets

Drainage nets in plastic material. Protect your sewage well by installing a drainage net on the drain pipe. Dirt such as lint will be trapped into the net.

Code	Part nr.	Description	Quantity
0W1Y2W	432730576	Drainage Nets	1000 pieces
0W1Y2X	432730577	Drainage Nets	100 pieces

Installation

Hose, Water Connection

Water connection for washers.



Code	Part number	Description	Length	R/Nut	Code
0W1VIP	438503102	Coupling: Y-Connection, Straight - Straight - Straight	1500 + 140 mm	3/4" x 3/4"	SW10



Code	Part number	Description	Length	R/Nut	Code
0W0FE8	438810802	Coupling: Straight - Straight	2000 mm	1"	1052



Code	Part number	Description	Length	R/Nut	Code
0W0FE3	438810803	Coupling: Straight - Bent	1500 mm	3/4" x 3/4"	SW19



Code	Part number	Description	Length	R/Nut	Code
0W004C	438810804	Coupling: Straight - Straight	1500 mm	3/4" x 3/4"	SW19



Code	Part number	Description	Length	R/Nut	Code
0W2801	471668966	Coupling: Y-Connection, Straight - Straight - Straight	1550 + 200 mm	3/4"x3/4"x1/2"	-



Code	Part number	Description	Length	R/Nut	Code
0W1V1T	471669344	Coupling: Straight - Straight	1500 mm	3/4"x3/4"	SW10



Code	Part number	Description	Length	R/Nut	Code
0W1CLE	487799196	Coupling: Straight - Straight	1400 mm	3/4" x 3/4"	DN13



Code	Part number	Description	Length	R/Nut	Code
0W1CLF	487799197	Coupling: Straight - Straight	1250 mm	1/2" x 3/4"	DN13



Code	Part number	Description	Length	R/Nut	Code
0W1CLG	487799198	Coupling: Straight - Bent	1250 mm	3/4" x 3/4"	DN13



Discover the Electrolux Excellence
and share more of our thinking at
www.professional.electrolux.com

Follow us on:



ElectroluxPro



ElectroluxPro



ElectroluxProfessional

Excellence with particular attention to the environment

- ▶ All Electrolux Professional plants are ISO 14001 certified.
- ▶ All Electrolux Professional solutions are designed to consume the minimum in terms of water, energy and detergents, with low emissions into the environment.
- ▶ In recent years more than 70% of Electrolux Professional solutions have been renewed and designed keeping in mind the customer's needs, and with particular attention to the environment.
- ▶ All Electrolux Professional solutions comply with ROHS and REACH and are over 95% recyclable.
- ▶ All Electrolux Professional solutions are 100% quality tested and all the functions are individually checked by expert technicians.

