

Slim outside Multiple benefits inside

MultiSlim, eco-friendly compact and robust oven.

The perfect fit for any business



You talk...

I'm looking for an oven to **fit the limited space** I have available, but that won't compromise on performance.

Space is at a premium.

I need to make my business profitable and adjust to provide quick-service and delivery options for my customers.

I'm struggling to find a **solidly built compact** oven that will help my business grow.



...we listen

Our MultiSlim compact oven offers exceptional efficiency and multifunction performance with less water waste.

It is the new eco-friendly, robust, compact oven you can rely on.



Green savings

15% less water*
Save on water bills



Cook in less space

Just 4.5 ft²



Long-lasting

159 lbs. Robust build
for heavy duty use

*versus standard injection oven.
Maximum moisture level hourly consumption



Take your business to the max with MultiSlim

Want to cut your water bills by **15%** and guarantee cooking performance?
The all new MultiSlim **compact oven** from Electrolux Professional is best in class for solidity and profitability when space is an issue.



Green



Less water* waste. Savings and respect for nature

Using up to **15% less water** than standard injection ovens, MultiSlim is better for the environment and **saves on your utility bills.**

*versus standard injection oven.
Maximum moisture level hourly consumption



Compact

just
4.5 ft²

Short on space?

Space-saving dimensions, just 4.5 ft², make MultiSlim **ideal for small kitchen.**

The perfect fit. Even if you move

Left or right door opening*.
And if your kitchen layout changes, simply replace the door on site with one that opens the other way.

*Left opening as standard. Right hinged door retrofittable on site. See spare parts catalog.



31 1/2 in



Solid

Built to last

Long term, heavy duty use is what MultiSlim is designed for, built using **high quality materials**

High visibility

Long-lasting LED lights inside door for perfect illumination of internal cavity

weight
159
lbs



Easy

Maximum simplicity

Perfect cooking guaranteed service after service. **Intuitive 5" touch screen interface** lets you create, save and program over 1000 of your favorite recipes

Precise cooking

1-sensor food probe included for accurate measurement of core temperature. Ideal for meat, fish or poultry.

Minimize maintenance

Maximize your time by letting MultiSlim do the cleaning. **Automatic Cleaning System** with four programs, self-dispensed detergent and auto-switch off. So you can get on with other tasks.



Fast access

Minimize downtime and simplify inspection with **easy front panel access** to all electrics and components. Less than 5 minutes to open the panel and inspect

Easy to install, anywhere

One oven, easy plug-in solution
Plug-in anywhere.



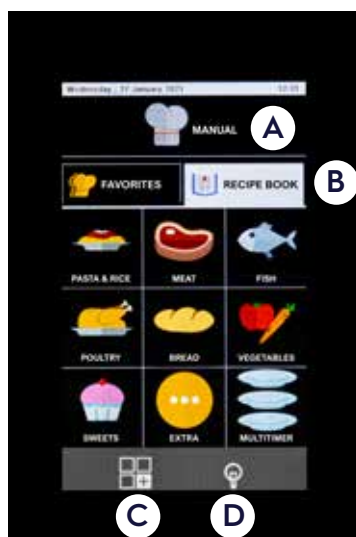
Your menu at your fingertips

Guaranteed results service after service. The simple to use MultiSlim programmable interface lets you create, **save and load over 1000 of your favorite recipes**.

Cooking made easy.

Choose "Manual" cooking (A) to set the cooking parameters specific for your single recipe or access the "Recipe Book" (B) where you can program your favorite recipes for easy access, time after time.

From the touch display easily access other functions (C) such as (cleaning, import/export cooking programs and oven settings and also activate the chamber lights (D).



Cooking mode:
convection



Delta-temperature
cooking mode



Manual water
injection



Cooking mode:
mixed



Vent valve:
closed



Programmed
start key



Cooking mode:
steam



Vent valve:
open



Home key: brings
one back to the
start screen



Holding
mode



Relative humidity
percentage



Cooking mode:
standard steam



Cool down.
Present only from
phase 2



Unlock key: allows
a program
to be changed



Cooking mode:
intensive steam



Cooking
time



Indicator of program
changed by the user,
or new program



Food probe
temperature



During cooking, it
allows the program
SET to be checked



Restaurant

Short on space and need to cut your running costs without compromising on performance? Multifunctional, compact MultiSlim is your new best friend.

Comforting, classic Crème Brûlée



180 °F humidity level 10



30 minutes

2

Suggested trayloads

30

Cocotte - 2 ¾ oz/each

No need to plastic wrap your trays. High steam saturation keeps your brûlées perfectly creamy with just the right amount of wobble.



922062
Single 304 stainless
steel grid (12" x 20")

Simply great gratin



374 °F humidity level 1



25 minutes

2

Suggested trayloads

36

Portions - 5 ¼ oz/each

Add some steam to create a tasty, golden gratin.



925002
Non-stick universal pan
(12" x 20" x 2 ½")

Perfectly steamed potatoes



212 °F humidity level 10



45 minutes

3

Suggested trayloads - 6.6 lbs/each

90

Portions - 19 ¼ lbs total

Steam your potatoes to perfection then simply season and serve or bake for a crispy skin.



922239
Pair of frying baskets
(20 7/8" x 12 13/16" x 1 9/16")



Bar, Bistro, Coffee shop

Rush hour orders flooding in? Stay ahead of the game with multifunction MultiSlim.

Crusty, freshly baked bread



-  374 °F convection
-  15 minutes
- 3** Suggested trayloads
- 12** Baguettes

The easy way to bake bread in just 15 minutes.



925007
Baking tray for (4)
baguettes (12" x 20")

Crispy, breaded fillets



-  410 °F convection
-  6 minutes
- 2** Suggested trayloads
- 12** Pieces - 5 oz/each



Tasty, high quantity frying is simple with our specially designed trays.



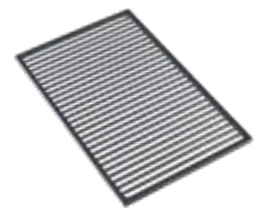
925000
Non-stick universal pan
(12" x 20" x 3/4")

Fast, even grilling



-  465 °F convection
-  7 minutes to medium/rare
- 2** Suggested trayloads
- 12** Pieces - 10 oz/each

Speed up cooking times and reduce smoke and odors with oven grilling.



925004
Non-stick grill
(12" x 20")

Accessories

Installation solution bases



Open base

Pre-mounted for easy oven installation.

PNC	922369
WxDxH	18 1/2" x 24 7/16" x 31 1/2"



Tray support

Mount on open base to provide additional storage.

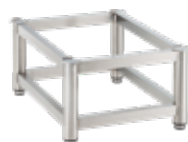
PNC	922370
Grid nr	6
WxDxH	2 5/16" x 5 1/16" x 28 15/16"



Stacking kit

Ideal for saving kitchen space.
The kit can be mounted on site.

PNC	922371
WxDxH	30 11/16" x 23 5/8" x 2 3/16"



Base support for stacked compact oven

Pre-arranged for an easy installation of the ovens.

PNC	922368
WxDxH	18 1/2" x 24 7/16" x 12 5/8"



Kit front air filter

Makes daily maintenance easy.

PNC	922379
WxDxH	15 3/4" x 13 3/4" x 13 3/4"



Hand shower

Pre-mounted for easy installation.

PNC	922372
WxDxH	8 1/16" x 8 1/16" x 8 1/16"



4 high adjustable feet

Height adjustable for better cleanability (5 5/16"-7 5/32")

PNC	922395
WxDxH	16 1/8" x 7 1/2" x 5 1/2"

Exhaust hood (available on request)

for odor reduction in the kitchen

GastroNorm trays



Oven grid

Ideal:
- for roasting large items.
- as support for non-standard containers and plates for regeneration.

PNC	922062
Material	AISI 304



Chicken grids

Ensure chickens roast evenly, browning skin and keeping meat juicy.

PNC	922086 (single)	922266 (single)
Chicken per grid	4 (1 ½- 4 ½ lbs size)	8 (1 ½- 4 ½ lbs size)
Material	AISI 304	



Pair of frying baskets

Ideal for air frying frozen pre-fried finger food (French fries, chicken nuggets, crab sticks...).

PNC	922239 (pair)
Material	AISI 304

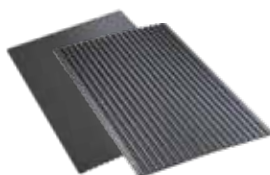


Non-stick U-pan

Ideal for:
- reducing cooking time up to 10% and energy consumption up to 8% (no surface preheating is required; differently from fry tops, the pan can come directly from the refrigerator).
- reducing food weight loss by 2-4% in comparison with traditional methods, enabling juicier products.
- improving operations (eliminates smoke, heat, necessity to grease pans and turn food).

Use plastic utensils to extend life of special surface coating.

Size	GN 1/1
PNC - ¾ in	925000 (single)
PNC - 1 ½ in	925001 (single)
PNC - 2 ¾ in	925002 (single)
Material	aluminum alloy with non-stick coating
Size	GN 1/2
PNC - ¾ in	925009 (single)
PNC - 1 ½ in	925010 (single)
PNC - 2 ¾ in	925011 (single)
Material	aluminum alloy with non-stick coating



Non-stick frying griddle

Ideal for:
- various cooking needs (double-faced pan features ribbed side for grilling and marking, flat side for baking and toasting)
- improving operations (no pre-heating needed, eliminates smoke and heat exhaustion, aluminum enhances the heat exchange for faster and more even cooking)

PNC	925003
Material	aluminum alloy with non-stick coating



Mesh grilling grid

Ideal for:
- adding grill marks
- improving operations (no pre-heating needed)

PNC	922713
Material	aluminum alloy with non-stick coating

GastroNorm trays



Non-stick egg fryer

Ideal for:

- automatic egg cooking process; may be used for pancakes, hamburgers, quiches and other round food
- improving operations (no pre-heating needed, aluminum)
- enhances the heat exchange for faster and more even cooking)

PNC	925005
Material	aluminum alloy with non-stick coating



Non-stick flat baking tray

Ideal for browning uniformity

PNC	925006
Material	aluminum alloy with non-stick coating

Food probe



Core probe (included)

Monitor core temperature. One-sensor probe. Essential for ECO-Delta and probe-guided cooking cycles.

PNC	922373
WxDxH	9 13/16" x 1 1/16" x 1 1/16"

Hood

Extraction hood

PNC	9R0123
WxDxH	20 1/8" x 14 1/2" x 48 2/3"

Detergent



C20 - Extra Strong Detergent for Ovens

- Ergonomic, easy-to-handle and store pack contains 2x1.3G jugs.
- Scan the QR code to download the Safety Data Sheet

PNC	0S2282
-----	--------

Water treatment



Reverse Osmosis Water System

PNC	9R011B
Oven size	6 half size sheet pans (GN1/1)
Filter capacity	500 GPD + 4 gallon tank
WxDxH	20" x 8" x 18"

Visit partstown.com to find genuine Electrolux Professional parts, accessories, and consumables.

Teamed to serve you



Your satisfaction is our satisfaction. Anything you need is always available thanks to an extensive Customer Care global network with over **2,200 Authorized Electrolux Professional Service Partners** in more than **149 countries**. **10,000 professional technicians** and over **170,000 managed spare parts**.

Keep your equipment performing

Undertaking correct maintenance in **accordance with Electrolux Professional Manuals** and recommendations is essential to avoid unexpected issues. **Electrolux Professional Customer Care** offers a number of **tailor made service packages**. For more information contact your preferred Electrolux Professional **Authorized Service Partner**.

Service network, always available

We stand ready and committed to support you with a **unique service network** that makes **your work-life easier**.



Find out more
on our website



MultiSlim compact oven		260650
	Left hinged door	•
	Right hinged door	optional kit available
	External dimensions (wxdxh)	20 7/16" x 31 3/4" x 30 5/16"
	Internal dimensions (wxdxh)	14 15/16" x 21 1/4" x 14 9/16"
	Tray capacity	6 half size sheet pans (GN1/1)
	Humidity control	21 settings
	Electric power	6.9 kW / 19.8 A
	Electrical connection	208 V / 3 ph / 60 Hz
	Weight	159 lbs
	Water supply	3/4"
	Water drain	1/16"
	Water supply pressure	1.5 - 4.5 bar
	Cleaning system	•





Excellence is central to everything we do.
By anticipating our customers' needs, we strive for
Excellence with our people, innovations, solutions and services.
To be the OnE making our customers' work-life easier,
more profitable – and truly sustainable every day.

Follow us on



www.electroluxprofessional.com

Electrolux Professional

4003 Collins Lane
Louisville, KY 40245
Phone +1-800-695-4500

Excellence with the environment in mind

- ▶ All our factories are ISO 14001-certified
- ▶ All our solutions are designed for low consumption of water, energy, detergents and harmful emissions
- ▶ In recent years over 70% of our product features have been updated with the environmental needs of our customers in mind
- ▶ Our technology is RoHS and REACH compliant and over 95% recyclable
- ▶ Our products are 100% quality tested by experts

