



Electrolux Professional
Customer Care

Accessories & Consumables

Catalog 2019

Release 2.0 US version





To make our customer's work-life easier and more profitable



Essentia
Teamed
to serve
you.



Your satisfaction is our satisfaction. Anything you need is always available thanks to an extensive Customer Care global network of over **2,200** authorized service partners worldwide.



Make your work simple and your equipment last longer with **original Accessories & Consumables**.

To guarantee the best performance and boosting the highest profitability.



Accessories & Consumables

Contents



Modular cooking
page 5



Cook&Chill
page 17



Dishwashing
page 29



Dynamic Preparation
page 33



Detergents
page 59



Accessories & Consumables

Modular cooking

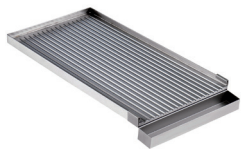
Index

Cookers and stoves - Gas range.....	6
Fry top.....	7
Fryers	8
Pasta cookers.....	10
Multifunctional range	14
Gastronorm containers.....	14
Speedelight accessories.....	15

Cookers and stoves - Gas range

Double burner ribbed plate for steaks

Fry top mode for gas burner and simple service;
equipped with a removable grease collector container



Code	WxDxH (mm)	Compatible with
921685	292.5x572.5x23	700XP; N700; PR700; B700; EVO700; ELCO700

Fry top

Scraper for smooth cooking plate



Code	WxDxH (mm)	Compatible with
164255	320x120x30	generic, for all smooth fry tops

Scraper for ribbed cooking plate

Scraper for ribbed plate fry top



Code	WxDxH (mm)	Compatible with
206420	200x80x60	generic, for all ribbed fry tops

C40 Degreaser for hot surfaces

Detergent active at high temperature for free cooking surfaces, fry tops and grills. Practical nozzle and spraying unit included.



Code	Packing
0S1841	1 pack of 6x1 liter bottle

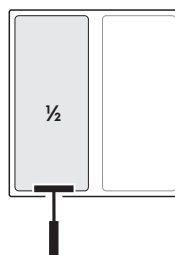
Fryers



Basket for fryer

Chromed half size basket fits to 18-23lt appliances and electric programmable fryer

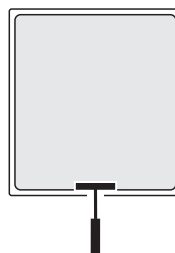
Code	WxDxH (mm)	Compatible with
927223	137x330x142	900XP; EVO900; ELCO900; HD900; N900



Basket for fryer

Chromed full size basket fits to 18-23lt appliances and electric programmable fryer

Code	WxDxH (mm)	Compatible with
927226	285x330x142	900XP; EVO900; ELCO900; HD900; N900



Sediment tray for 23lt fryer

For free standing v-shape fryers

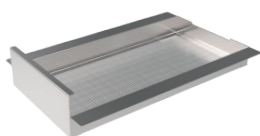
Code	WxDxH (mm)	Compatible with
206173	61x384x126	900XP; N900; EVO900; ELCO900



Unclogging rod for 23lt fryer drain pipe

Diameter 6mm

Code	WxDxH (mm)	Compatible with
927227	781x125x6	900XP; 700XP; EVO700; EVO900; ELCO700; ELCO900; HD900; MD700; N700; N900; PR700

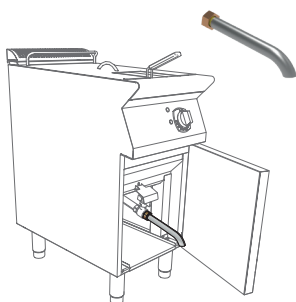


Oil filter

For free standing fryers

Code	WxDxH (mm)	Compatible with
206359	242x490x50	900XP; N900; EVO900; ELCO900

Fryers



Extension for oil drainage

1" - 270 mm long. Suitable for 23lt fryers.

Code	WxDxH (mm)	Compatible with
206209	30x400x30	700XP; 900XP; EVO700; EVO900



Deflector

For floured products for freestanding V-shape fryers. the deflector is lying on the inclined part of the well, in order to avoid the bread or flour released by the products to lie there and get burned. Suitable for 23lt fryers.

Code	WxDxH (mm)	Compatible with
960645	295x390x65	700XP; 900XP; EVO700; EVO900; ELCO900; N900

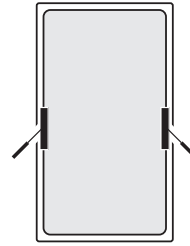
Pasta cookers



Basket for pasta cooker in stainless steel

Full size square basket with 2 side handles

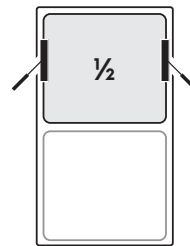
Code	WxDxH (mm)	Compatible with
921611	230x360x240	700XP; EVO700; ELCO700; N700; PR700



Basket for pasta cooker in stainless steel

Half size square basket with 2 side handles

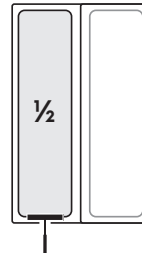
Code	WxDxH (mm)	Compatible with
921610	230x180x240	700XP; EVO700; ELCO700; N700; PR700



Basket for pasta cooker in stainless steel

Half size square basket with one handle on the front side

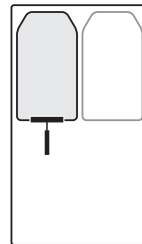
Code	WxDxH (mm)	Compatible with
921619	105x350x265	700XP; EVO700; ELCO700; N700; PR700



Basket for pasta cooker in stainless steel

For automatic pasta cookers

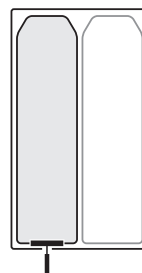
Code	WxDxH (mm)	Compatible with
206312	115x160x123	700XP; EVO700; ELCO700; N700



Basket for pasta cooker in stainless steel

For automatic pasta cookers

Code	WxDxH (mm)	Compatible with
206314	105x320x123	700XP; EVO700; ELCO700; N700



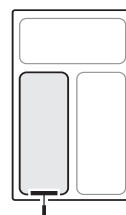
Pasta cookers



Basket for pasta cooker in stainless steel

Square basket with handle on the front side

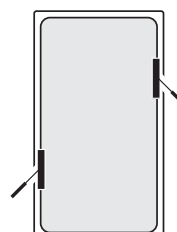
Code	WxDxH (mm)	Compatible with
206237	135x310x215	900XP; N900; EVO900; ELCO900



Basket for pasta cooker in stainless steel

Full size square basket 1/1

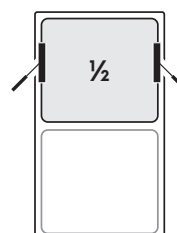
Code	WxDxH (mm)	Compatible with
927216	276x485x210	900XP; EVO900; ELCO900; HD900; N900; PR700



Basket for pasta cooker in stainless steel

Square basket 1/2

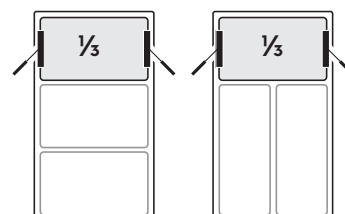
Code	WxDxH (mm)	Compatible with
927211	275x230x210	900XP; EVO900; ELCO900; HD900; N900; PR700



Basket for pasta cooker in stainless steel

Square basket 1/3

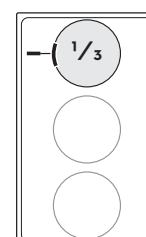
Code	WxDxH (mm)	Compatible with
927210	275x150x210	900XP; EVO900; ELCO900; HD900; N900; PR700



Basket for pasta cooker in stainless steel

Round basket 1/3 diam. 170 mm

Code	Ø x H (mm)	Compatible with
927212	170x180	900XP; EVO900; ELCO900; EVO700; ELCO700; HD900; MD700; N700; N900 PR700



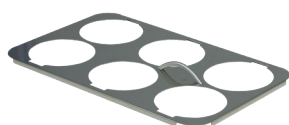
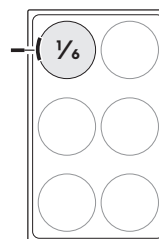
Pasta cookers



Basket for pasta cooker in stainless steel

Round basket 1/6 diam. 135 mm

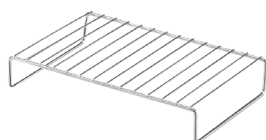
Code	Ø x H (mm)	Compatible with
927213	135x180	900XP; EVO900; ELCO900; EVO700; ELCO700; HD900; MD700; N700; N900 PR700



Support frame

To hold 6 round baskets code 927213;
to be used to fix the position of the basket during the cooking

Code	WxDxH (mm)	Compatible with
960644	330x535x10	900XP; N900; EVO900; ELCO900



Bottom grid

Support for pasta cooker baskets for automatic pasta cookers

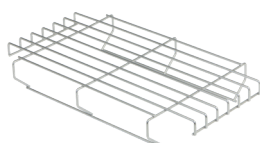
Code	WxDxH (mm)	Compatible with
206362	230x350x147	700XP; EVO700; ELCO700; N700; PR700



Bottom grid

Support for pasta cooker baskets

Code	WxDxH (mm)	Compatible with
927219	290x500x115	900XP; EVO900; ELCO900; HD900; N900; PR700



Bottom grid

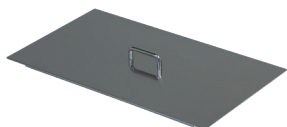
Support for pasta cooker baskets

Code	WxDxH (mm)	Compatible with
206238	290x500x80	900XP; EVO900; ELCO900; N900

Pasta cookers

Lid for pasta cookers

For 700 series



Code	WxDxH (mm)	Compatible with
921607	250x450x50	700XP; EVO700; ELCO700; N700; PR700

Lid and lid holder for pasta cookers

For 900 series



Code	WxDxH (mm)	Compatible with
206190	300x700x100	900XP; EVO900; ELCO900; N900

Multifunctional range

Scraper for smooth cooking plate



Code	WxDxH (mm)	Compatible with
164255	320x120x30	700XP; 900XP; EVO900; ELCO900; EVO700; ELCO700; HD900; MD700; N700; N900; PR700; 600; B700

Gastronorm containers

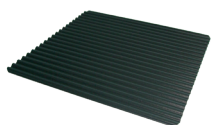
Gastronorm container GN 1/2



Code	WxD (mm)	Height (mm)
329040	325x265	65



SpeedDelight accessories



Teflon coated corrugated aluminum plate

Suitable for machines arranged for the insertion of the removable teflon plate

Code	WxDxH (mm)
653787	213x203x4



Silicone plate spatula

Versatile for multiple uses

Code	Package
653625	1 each



Plate cleaning brush

Suitable for high temperatures, removes solid residues and crumbs

Code	Package
653623	1 each

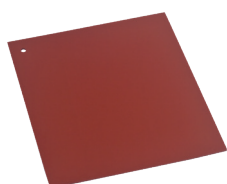


C41 RAPID GREASE for SpeedDelight

For cleaning of SpeedDelight hot plates (max 347°F / 175°C). Practical nozzle and spraying unit included.

1 pack of six 1l bottles
(Sprayer OS2331 included)

Code	Package
0S2292	1 pack of six 1l bottles



Silicone protective mat

For glass ceramic plate. Suitable for protecting the glass when cleaning the top plate (to be used only during servicing).

Code	WxDxH (mm)
653527	240x240x5



Accessories & Consumables

Cook&Chill

Index

GN grids and trays	18
Grids and trays for bakery rack	21
Grids and trays for convection ovens.....	22
Generic trays in stainless steel	23
Filters	23
Sous-vide cooking	24
Smokers.....	24
Cleaning system	25
Thermal blanket for racks	26

GN grids and trays



Aluminum alloy trays with non-stick coating

- ▶ Reduces cooking time up to 10% and energy consumption up to 8%
- ▶ Reduces food weight loss by 2% - 4% in comparison with traditional trays
- ▶ Improve operations

Code	GN Size	WxDxH (mm)
925009	GN 1/2	325x265x20
925010	GN 1/2	325x265x40
925011	GN 1/2	325x265x60

⚠ Warning

- ▶ Recommended to use plastic spatulas in order to extend special coating life
- ▶ Recommended not to clean with granule-type dishwashers

Code	GN Size	WxDxH (mm)
925000	GN 1/1	530x325x20
925001	GN 1/1	530x325x40
925002	GN 1/1	530x325x60



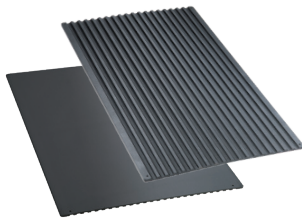
Aluminum grill with non-stick coating

Ideal for marking steaks and improving operations (no pre-heating needed)

Code	GN Size	WxDxH (mm)
925004	GN 1/1	530x325x12

⚠ Warning

- ▶ Recommended to use plastic spatulas in order to extend special coating life
- ▶ Recommended not to clean with granule-type dishwashers



Non-stick frying plate

In aluminum alloy with non-stick coating.

For various cooking needs: **double faced plate** features ribbed side for grilling and marking, flat side for baking and toasting

Code	GN Size	WxDxH (mm)
925003	GN 1/1	530x325x5

⚠ Warning

- ▶ Recommended to use plastic spatulas in order to extend special coating life
- ▶ Recommended not to clean with granule-type dishwashers



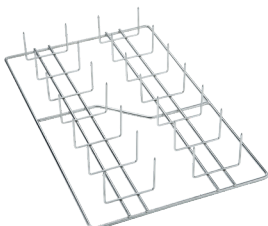
Non-stick egg fryer

Tray for 8 eggs in aluminum alloy with non-stick coating for automatic egg cooking process; may be used for pancakes, hamburgers, omelet, quiches and other round shaped food

Code	GN Size	WxDxH (mm)
925005	GN 1/1	530x325x12

⚠ Warning

- ▶ Recommended to use plastic spatulas in order to extend special coating life
- ▶ Recommended not to clean with granule-type dishwashers



Potato baker

In AISI 304 for 28 potatoes

Code	GN Size	WxDxH (mm)
925008	GN 1/1	530x325x85

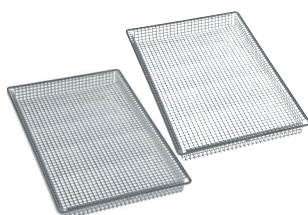
GN grids and trays



Non-stick baguette tray GN 1/1

Perforated aluminum, silicon coating, ideal for baking baguettes (enables fitting 4 pieces, 290g each)

Code	GN Size	WxDxH (mm)
925007	GN 1/1	530x325x14



Frying basket, set of 2 pieces

Frying basket in AISI 304; ideal for air frying frozen pre-fried finger food (french fries, chicken nuggets, crab sticks)

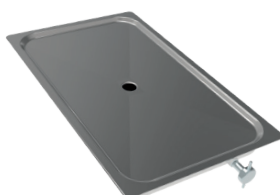
Code	GN Size	WxDxH (mm)
922239	GN 1/1	530x325x40



Chicken grids

In AISI 304, ideal for obtaining perfect browning and juicy cooking results, thanks to the distribution of the chickens on the grid. 8 chickens per grid.

Code	GN Size	WxDxH (mm)
922036	GN 1/1	530x325x140



Grease drip trays in AISI 304

In stainless steel AISI 304; ideal for an easy fat collection and drain all thanks to the integrated stainless steel drain. Includes tray with integrated drain and lid.

Code	GN Size	WxDxH (mm)
922329	GN 1/1	530x325x40

Code	GN Size	WxDxH (mm)
922321	GN 1/1	530x325x100

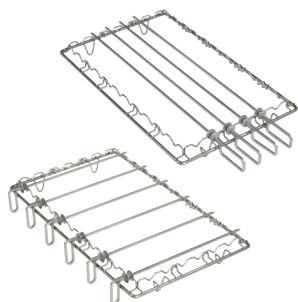


Aluminum baking tray with 2 edges GN 1/1

For bakery

Code	GN Size	WxDxH (mm)
925006	GN 1/1	530x325x10

GN grids and trays

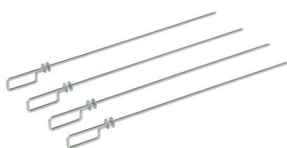


Universal skewer rack with skewers

In AISI 304, Ideal for preparing all type of kebab, tandoori grill, churrasco, yakitori and any other kind of cooking using skewers

Code	GN Size	WxDxH (mm)	Skewers
922324	GN 1/1	530x325x55	4 long

Code	GN Size	WxDxH (mm)	Skewers
922325	GN 1/1	530x325x55	6 short



Long skewers

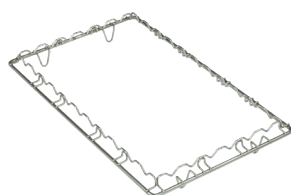
Set of 4 pieces

Code	GN Size	WxDxH (mm)
922327	GN 1/1	240x615x10

Short skewers

Set of 6 pieces

Code	GN Size	WxDxH (mm)
922328	GN 1/1	240x355x10



Universal skewer rack

Code	GN Size	WxDxH (mm)
922326	GN 1/1	530x325x55

Grids and trays for bakery rack



Oven grid

In AISI 304, used as support for containers and pans without removing the bakery rack

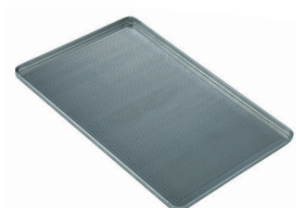
Code	WxDxH (mm)
922264	600x400x12



Baguette tray

In perforated aluminum, silicon coated, ideal for baking baguettes (enables fitting 5 pieces, max. 600 mm long)

Code	WxDxH (mm)
922189	600x400x38



Perforated bakery/pastry tray

In aluminum, Ideal for baking light pastry (ex. beignets)

Code	WxDxH (mm)
922190	600x400x20



Smooth bakery/pastry tray

In aluminum, ideal for baking breads and pastry

Code	WxDxH (mm)
922191	600x400x20

Grids and trays for convection ovens

Oven pan in stainless steel

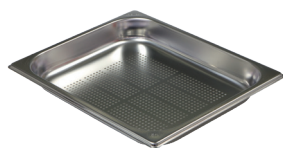
For 3 GN 1/2 combi ovens



Code	GN Size	WxDxH (mm)
921181	GN 1/2	325x265x40

Perforated baking tray

For 3 GN 1/2 combi ovens



Code	GN Size	WxDxH (mm)
921180	GN 1/2	325x265x40

Smooth baking tray

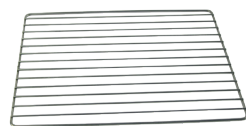
For 3GN 1/2 combi ovens



Code	GN Size	WxDxH (mm)
921183	GN 1/2	325x265x5

Wire grid

In stainless steel AISI 304 for 3 GN 1/2 combi ovens



Code	GN Size	WxDxH (mm)
921182	GN 1/2	325x265x5

Generic trays in stainless steel

Smooth trays



Code	GN Size	WxDxH (mm)
925000	GN 2/1	530x650x20
925001	GN 2/1	530x650x40
925002	GN 2/1	530x650x65

Filters



Fat filters

Recommended for greasy cooking to facilitate cleaning operations.
Can be washed in the dishwasher.

Code	Oven Size	WxDxH (mm)
922177	6 GN 1/1	450x360x30



Fat filters

Recommended for greasy cooking to facilitate cleaning operations..
Can be washed in the dishwasher.

Code	Oven Size	WxDxH (mm)
922178	10 GN 1/1 - 10 GN 2/1 20 GN 1/1 - 20 GN 2/1	620x490x100

- For 20 GN ovens use 2 pieces

Sous-vide cooking



USB sous-vide probe

Ideal for sous-vide cooking to ensure that the correct core temperature is accurately reached without affecting the vacuum in the bag.

1 mm in diameter, 60 mm in length, with a special diagonal-cut needle point design to avoid breaking the vacuum seal when inserted.

Only for air-o-steam Touchline and air-o-convect Touchline

Code	GN Size	WxDxH (mm)
922281	all	160x170x90

Smokers



Volcano smoker

In AISI 304. For cooking and smoking of fish, pork, poultry, beef, cheese, bread, and vegetables using wood chips, dried spices.

Low temperature cooking with smoked flavor. The quantity of smoke produced can be adjusted (registered design @ EPO).

Code	Oven compatibility	WxDxH (mm)
922338	all	220x220x85



**Experience
how it works
with the smoky touch**
watch our video

Cleaning system



C20 Extra Strong Detergent for ovens

Cleaning detergent for ovens with automatic washing system. Pack of 2 x 5 liter can.

Code	Package
0S2282	one pack of 2 cans of 5 lt.



C21 Extra Strong Rinse aid for ovens

Rinse aid for ovens with automatic washing system. Pack of 2 x 5 liter can.

Code	Package
0S2283	one pack of 2 cans of 5 lt.



External spray unit

Includes a support to be mounted on the external side panel of the oven

Code	Oven Size	Length (mm)
922171	all	2000

Thermal blanket for racks



Thermal blanket for racks

Ideal for keeping food warm up to 30 minutes.
Enables easy folding with straps. Washable: ETL Sanitation approved.

Code	Oven size	WxDxH (mm)
922048	10 GN 2/1	2225x2165x720



Thermal blanket for racks

Ideal for keeping food warm up to 30 minutes.
Enables easy folding with straps. Washable: ETL Sanitation approved.

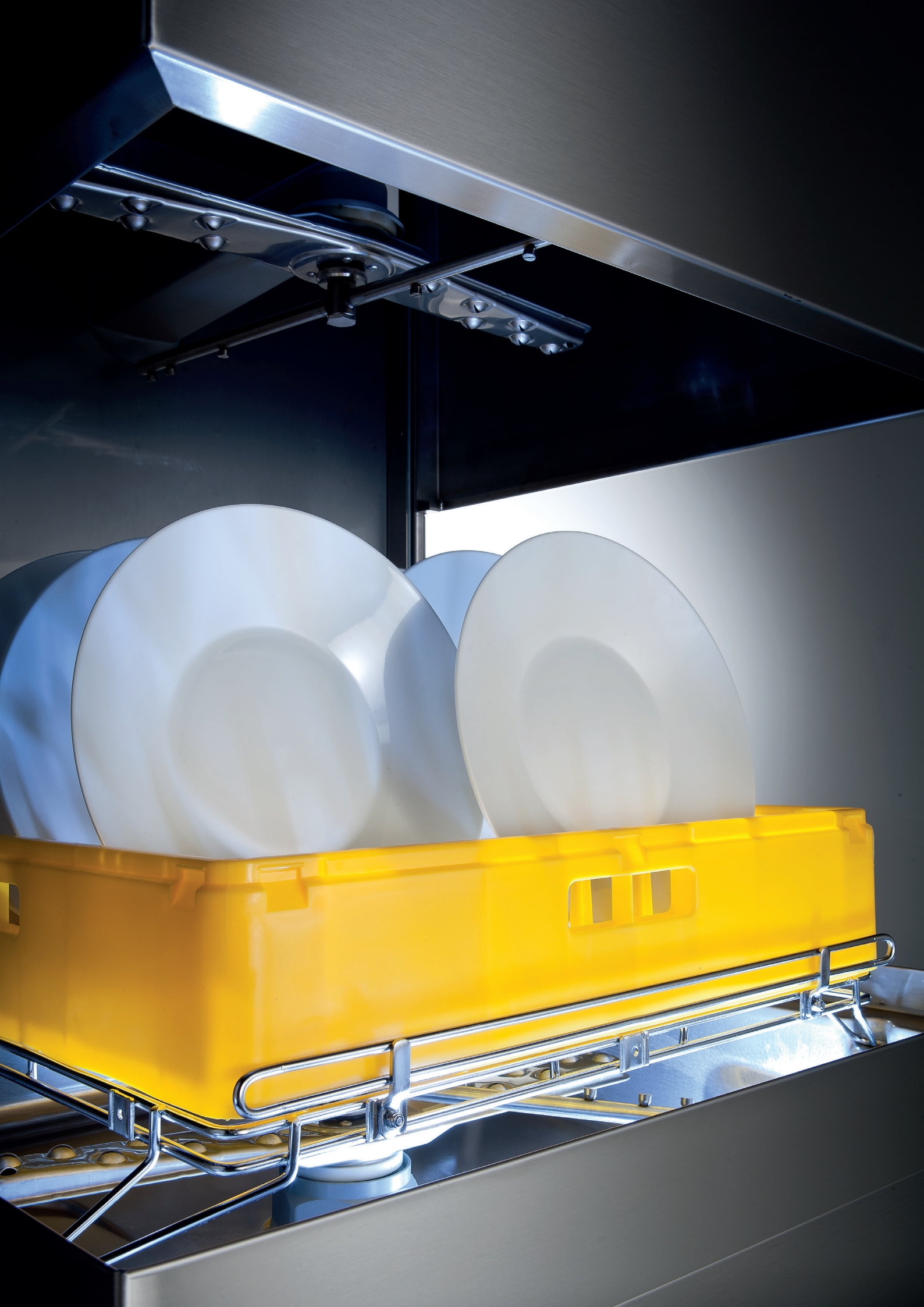
Code	Oven size	WxDxH (mm)
922014	20 GN 1/1	385x660x1560



Thermal blanket for racks

Ideal for keeping food warm up to 30 minutes.
Enables easy folding with straps. Washable: ETL Sanitation approved.

Code	Oven size	WxDxH (mm)
922049	20 GN 2/1	625x785x1550



Accessories & Consumables

Dishwashing

Index

Detergents.....	30
Baskets for Pot&Pan washers.....	31

Detergents



C11 Detergent for dishwashers

- Ideal for all types of crockery: ceramic, porcelain, glass, crystal and metal
- It is very functional for removing caffeine and theine deposits from cups and teapots.
- Its delicate aroma helps minimize the unpleasant odor, which can sometimes be found in dishwashers.
- Highly recommended for restaurants preparing fish and sea food.
- Particularly suitable for hard and medium hard water

Code	Package	Compatible with
OS2092	one pack of 2 cans of 5lt.	glasswasher, undercounter, front loading, hood type, rack type



C13 ECO Detergent for dishwashers

- Ideal for all type of crockery: ceramic, porcelain, glass, crystal and metals
- Its special "Eco-Formula" free of phosphates, EDTA and NTA makes the product ecologically friendly with a very low environmental impact
- Very efficient in case of dried food residues on all kind of dishes
- Particularly suitable for soft water and recommended for dishwashing systems with osmosis or demineralisers

Code	Package	Compatible with
OS2093	one pack of 2 cans of 5lt.	glasswasher, undercounter, front loading, hood type, rack type



C12 Rinse aid for dishwashers

- Brightener additive for crockery rinsing in the dishwasher
- Guarantees sparkling clean and dry crockery
- Use of vegetable origin surfactants
- Ideal for ceramics, porcelain, glass and crystal
- Specific formula for hard water and medium hard waters

Code	Package	Compatible with
OS2094	one pack of 2 cans of 5lt.	glasswasher, undercounter, front loading, hood type, rack type



C14 Rinse aid Plus for dishwashers

- Rinse additive for crockery rinsing in the dishwashers
- Super concentrated formula recommended for soft water conditions
- Offers a perfect drying without stains or any water trace, therefore highly recommended for glasses
- Use of vegetable origin surfactants
- Ideal for dishes in glass, crystal, ceramics, porcelain

Code	Package	Compatible with
OS2095	one pack of 2 cans of 5lt.	glasswasher, undercounter, front loading, hood type, rack type

Baskets for Pot&Pan washers

Basket for pot washers

In stainless steel



Code	WxDxH (mm)	Compatible with
864191	688x716x100	hood type, pot&pan washer

Rack for containers and trays



Code	WxDxH (mm)	Compatible with
864182	500x500x110	for all baskets for all pot washers



Accessories & Consumables

Dynamic preparation

Index

Mini Green	34
TRS - TR210.....	35
Cutting disc guide	38
TR260 - TR300	46
Multigreen.....	48
TRK45 - 55 - 70.....	49
CT6	50
K25 - 45 - 55 - 70	51
K120/KE120 - K120S/KE120S	55
K180/KE180 - K180S/KE180S	56
Speedy mixer - B3000	57

Mini Green

Vegetable slicers



Mini Green accessories

653178



653178

RD2

S/steel grating disc 2 mm

653003

RD3

S/steel grating disc 3 mm

653004



653004

RD4

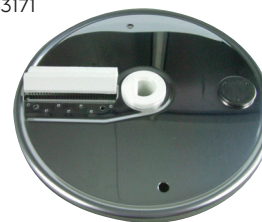
S/steel grating disc 4 mm

653005

RD7

S/steel grating disc 7 mm

653171



653171

ED2

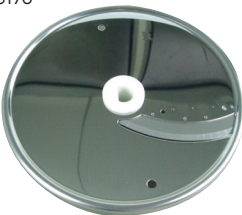
S/steel stick cutting disc 2 mm

653006

ED4

S/steel stick cutting disc 4 mm

653176



653176

TD2

S/steel slicing disc 2 mm

653177

TD3

S/steel slicing disc 3 mm

653001



653001

TD5

S/steel slicing disc 5 mm

653002

TD7

S/steel slicing disc 7 mm

653007



653007

WD2

S/steel wavy slicing disc 2 mm



653050

Disc holder

TRS-TR210

Vegetable slicers



Accessories for discs and dicing grids for TRS and TR210

653773

**653773**

J2X

S/steel Julienne disc 2 mm

653774

J3X

S/steel Julienne disc 3 mm

653775

J4X

S/steel Julienne disc 4 mm

653776

**653776**

J7X

S/steel Julienne disc 7 mm
For mozzarella**653777**

J9X

S/steel Julienne disc 9 mm
For mozzarella**653778**

KX

S/steel grating disc
For dumplings and bread**653779**

PX

S/steel grating disc
For cheese and bread

650166

**650166**

AS2XX

S/steel stick cutting disc 2 mm

650158

AS2X8X

S/steel stick cutting disc with "S" blades 2x8 mm For tagliatelle

650159

AS2X10X

S/steel stick cutting disc with "S" blades 2x10 mm For tagliatelle

650078

**650078**

AS6XX

S/steel stick cutting disc with "S" blades 6x6mm
Also suitable for chips**650079**

AS8XX

S/steel stick cutting disc with "S" blades 8x8mm
Also suitable for chips**650080**

AS10XX

S/steel stick cutting disc with "S" blades 10x10mm
Also suitable for chips**650167**

AS3XX

S/steel stick cutting disc 3 mm

650077

AS4XX

S/steel stick cutting disc 4 mm

TRS-TR210

Vegetable slicers

650082

**650081****C06SX****S/steel slicing disc with****"S" blades 0.6 mm**Suitable for slicing or combining
with dicing grids**650082****C1SX****S/steel slicing disc with****"S" blades 1 mm**Suitable for slicing or combining
with dicing grids**650083****C2SX****S/steel slicing disc with****"S" blades 2 mm**Suitable for slicing or combining
with dicing grids**650084****C3SX****S/steel slicing disc with****"S" blades 3 mm**Suitable for slicing or combining
with dicing grids**650085****C4SX****S/steel slicing disc with****"S" blades 4 mm**Suitable for slicing or combining
with dicing grids

650160

**650086****C5SX****S/steel slicing disc with "S"****blades with pusher 5 mm**Suitable for slicing or combining
with dicing grids**650087****C6SX****S/steel slicing disc with "S"****blades with pusher 6 mm**Suitable for slicing or combining
with dicing grids**650088****C8SX****S/steel slicing disc with "S"****blades with pusher 8 mm**Suitable for slicing or combining
with dicing grids**650160****C10SX****S/steel slicing disc with "S" blades**
with pusher 10 mmFor Mozzarella. Suitable for slicing
or combining with dicing grids.**650161****C12SX****S/steel slicing disc with "S" blades**
with pusher 12 mmSuitable for slicing or combining
with dicing grids**650165****C13SX****S/steel slicing disc with "S" blades**
with pusher 13 mmSuitable for slicing or combining
with dicing grids

650089

**650089****C2WX****S/steel disc with corrugated****"S" blades 2 mm**Suitable for slicing or combining
with dicing grids**650090****C3WX****S/steel disc with corrugated****"S" blades 3 mm**Suitable for slicing or combining
with dicing grids**650091****C6WX****S/steel disc with corrugated****"S" blades 6 mm**Suitable for slicing or combining
with dicing grids

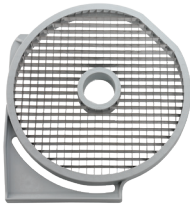
650162

**650162****C8WX****S/steel disc with corrugated****"S" blades with pusher 8 mm**Suitable for slicing or combining
with dicing grids**650164****C10WX****S/steel disc with corrugated****"S" blades with pusher 10 mm**Suitable for slicing or combining
with dicing grids

TRS-TR210

Vegetable slicers

653568

**653566****MT05T****S/steel dicing grid 5x5 mm**

For combining with slicing discs with smooth blades (C) and corrugated blades (CW)

653567**MT08T****S/steel dicing grid 8x8 mm**

For combining with slicing discs with smooth blades (C) and corrugated blades (CW)

653568**MT10T****S/steel dicing grid 10x10 mm**

For combining with slicing discs with smooth blades (C) and corrugated blades (CW)

653569**MT12T****S/steel dicing grid 12x12 mm**

For combining with slicing discs with smooth blades (C) and corrugated blades (CW)

653570**MT20T****S/steel dicing grid 20x20 mm**

For combining with slicing discs with smooth blades (C) and corrugated blades (CW)

653572

**653571****FT06****S/steel grid for chips/strips****6x6 mm**

For combining with slicing discs with smooth blades (C) and corrugated blades (CW)

653572**FT08****S/steel grid for strips 8x8 mm**

For combining with slicing discs with smooth blades (C) and corrugated blades (CW)

653573**FT10****S/steel grid for strips 10x10 mm**

For combining with slicing discs with smooth blades (C) and corrugated blades (CW)

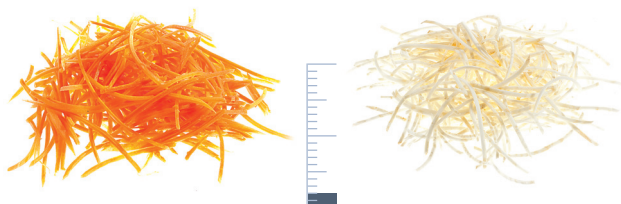
**653772****Ejector disc**

Cutting disc guide

TRS - TR210

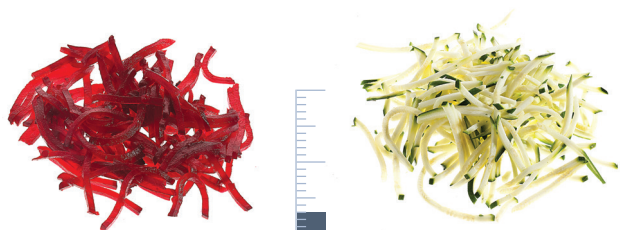


Stick cutting discs
from 2 to 10 mm



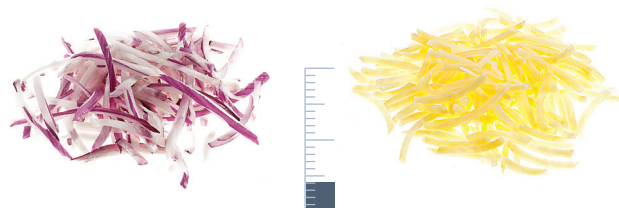
AS2XX
650166

2 mm



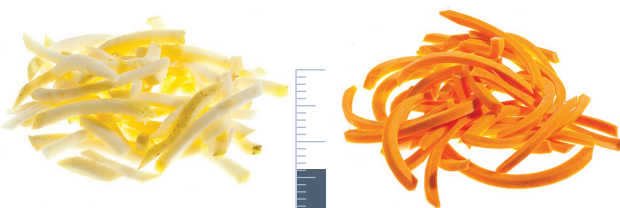
AS3XX
650167

3 mm



AS4XX
650077

4 mm



AS6XX
650078

6 mm



AS8XX
650079

8 mm



AS10XX
650080

10 mm



AS2X8X
650158

8 mm



AS2X10X
650159

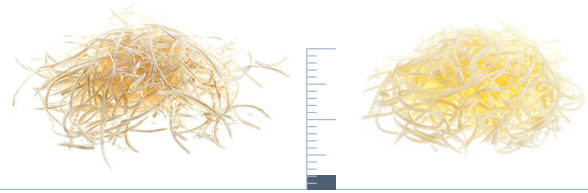
10 mm

Cutting disc guide

TRS and TR210

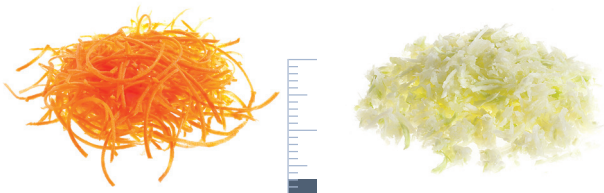


Julienne discs
from 2 to 9 mm



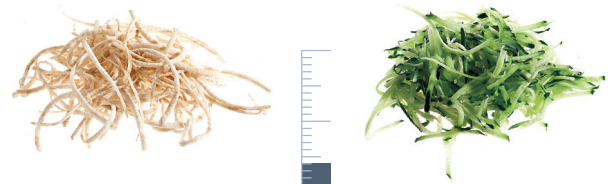
J2X
653773

2 mm



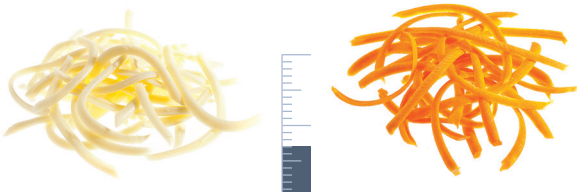
J3X
653774

3 mm



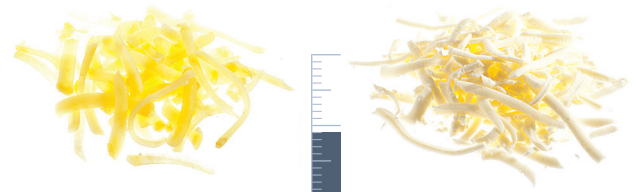
J4X
653775

4 mm



J7X
653776

7 mm



J9X
653777

9 mm



KX
653778

for dumplings/bread/potatoes



PX
653779

for Parmesan cheese / chocolate

Cutting disc guide

TRS - TR210



Slicing discs
from 0.6 to 13 mm



C06SX
650081

0.6 mm



C1SX
650082

1 mm



C2SX
650083

2 mm



C3SX
650084

3 mm



C4SX
650085

4 mm



C5SX
650086

5 mm



C6SX
650087

6 mm



C8SX
650088

8 mm



C10SX
650160

10 mm



C12SX
650161

12 mm



C13SX
650165

13 mm

Cutting disc guide

TRS - TR210



Discs with corrugated
blades
from 2 to 9 mm



C2WX
650089

2 mm



C3WX
650090

3 mm



C6WX
650091

6 mm



C8WX
650162

8 mm



C10WX
650164

10 mm

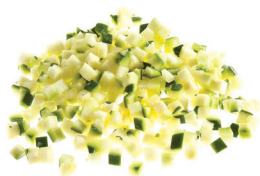
Cutting disc guide

TRS - TR210



Dicing grids from 5x5 mm to 20x20 mm

For combining with slicing discs with smooth blades (C) and corrugated blades (CW)



C5SX+MT05T
650086+653566

5x5x5 mm



C8SX+MT08T
650088+653567

8x8x8 mm



C10SX+MT10T
650160+653568

10x10x10 mm



C12SX+MT12T
650161+653569

12x12x12 mm



C10WX+MT20T 10x20x20 mm
650164+653570



C13SX+MT20T
650165+653570



13x20x20 mm



C2WX+MT20 2x20x20 mm
650089+653570



C3WX+MT10 3x10x10 mm
650091+653570



C3SX+MT12 3x12x12 mm
650084+653569



C4SX+MT20 4x20x20 mm
650085+653570



C3WX+MT12 3x12x12 mm
650090+653569



C6WX+MT10 6x10x10 mm
650091+653568

Cutting disc guide

TRS - TR210



Strip grids 6, 8 and 10 mm

For combining with slicing discs with smooth blades (C) and corrugated blades (CW)



C6SX+FT06 6x6 mm
650087+653571



C8SX+FT08 8x8 mm
650088+653572



C10WX+FT10 10x10 mm
650164+653573



C2SX+FT10 10x10 mm
650083+653573



C3WX+FT10 10x10 mm
650090+653573

Blades for discs TRS - TR210 - CX21D

OLD disc code	Knife/plate type	No. OLD knives	OLD spare part	Set pcs spare part	Disc code	NEW disc code	Disc model	Description	Knife/plate type	No. NEW knives	NEW spare part	Set pcs spare part code
					653728	650081	C06SX	S/steel SLICING disc with "S" blades 0.6 mm	curved	2	0D7431	2
653101	straight	3	OKJ658	3								
653111	curved	2	OKJ003	2	653729	650082	C1SX	S/steel SLICING disc with "S" blades 1 mm	curved	2	0D7431	2
653102	straight	3	OKJ658	3								
653112	curved	2	OKJ003	2	653730	650083	C2SX	S/steel SLICING disc with "S" blades 2 mm	curved	2	0D7431	2
653103	straight	2	OKJ658	3								
653113	curved	1	OKJ003	2	653731	650084	C3SX	S/steel SLICING disc with "S" blades 3 mm	curved	2	0D7431	2
					653732	650085	C4SX	S/steel SLICING disc with "S" blades 4 mm	curved	2	0D7431	2
653115	curved	1	OKJ003	2	653733	650086	C5SX	S/steel SLICING disc with "S" blades 5 mm	curved	2	0D7431	2
					650048			S/steel SLICING disc with "S" blades 5 mm with pusher	curved	1	0D7431	2
653106	straight	2	OKJ658	3	653735	650087	C6SX	S/steel SLICING disc with "S" blades 6 mm	curved	2	0D7431	2
					650049			S/steel SLICING disc with "S" blades 6 mm with pusher	curved	1	0D7431	2
653108	straight	1	OKJ658	3	653737	650088	C8SX	S/steel SLICING disc with "S" blades 8 mm	curved	2	0D7431	2
					650050			S/steel SLICING disc with "S" blades 8 mm with pusher	curved	1	0D7431	2
653110	straight	1	OKJ658	3	650051		C10SX	S/steel SLICING disc with "S" blades 10 mm with pusher	curved	1	0D7431	2
					650052	650160	C10PSMB	S/steel SLICING disc with "S" blades 10 mm with pusher MOZZARELLA	curved	1	0D7431	
					650053	650161	C12SX	S/steel SLICING disc with "S" blades 12 mm	curved	1	0D7431	2
					650054	650165	C13SX	S/steel SLICING disc with "S" blades 13 mm	curved	1	0D7431	2
653185	straight	1	OKJ658	3				Aluminium SLICING disc 14 mm				
653122	corrugated	3	OD0359	3	653749	650089	C2WX	S/steel disc with CORRUGATED "S" blades 2 mm	corrugated	2	0D7424	2
653123	corrugated	3	OD0359	3	653750	650090	C3WX	S/steel disc with CORRUGATED "S" blades 3 mm	corrugated	2	0D7424	2
653126	corrugated	3	OD0360	3	653751	650091	C6WX	S/steel disc with CORRUGATED "S" blades 6 mm	corrugated	2	0D7424	2
					650055	650162	C8WX	S/steel disc with CORRUGATED "S" blades 8 mm	corrugated	1	0D7424	2
					650056	650164	C10WX	S/steel disc with CORRUGATED "S" blades 10 mm	corrugated	1	0D7424	2
653162, 653713	julienne	1	OD0815	1	653773		J2X	S/steel JULIENNE disc 2 mm	julienne	1	0D7458	1
653163, 653714	julienne	1	OD0816	1	653774		J3X	S/steel JULIENNE disc 3 mm	julienne	1	0D7459	1
653164, 653715	julienne	1	OKQ435	1	653775		J4X	S/steel JULIENNE disc 4 mm	julienne	1	0D7460	1
653167, 653716	julienne	1	OD0822	1	653776		J7X	S/steel JULIENNE disc 7 mm	julienne	1	0D7461	1
653498, 653717	julienne	1	OD7114	1	653777		J9X	S/steel JULIENNE disc 9 mm	julienne	1	0D7462	1
653008, 653718	grating	1	OD0774	1	653778		KX	S/steel GRATING disc for dumplings and bread	grating	1	0D7463	1
653170, 653719	grating	1	OD0825	1	653779		PX	S/steel GRATING disc for Parmesan cheese and bread	grating	1	0D7464	1
653214	curved	2	OKL028	2								
	comb	2	OD0695	1	653743	650166	AS2XX	S/steel STICK cutting disc with "S" blades 2x2 mm	curved	2	0D7431	2
									comb	2	0D7425	1
					650095	650158	AS2X8X	S/steel STICK cutting disc with "S" blades 2x8 mm	curved	2	0D7431	2
									comb	2		
					650096	650159	AS2X10X	S/steel STICK cutting disc with "S" blades 2x10 mm	curved	2	0D7431	2
									comb	2		
653153	curved	2	OKL028	2								
	comb	2	OKQ411	1	653744	650167	AS3XX	S/steel STICK cutting disc with "S" blades 3x3 mm	curved	2	0D7431	2
									comb	2	0D7426	1
653154	curved	2	OKL028	2								
	comb	2	OKQ412	1	653745	650077	AS4XX	S/steel STICK cutting disc with "S" blades 4x4 mm	curved	2	0D7431	2
									comb	2	0D7427	1
					653746	650078	AS6XX	S/steel STICK cutting disc with "S" blades 6x6 mm	curved	1	0D7431	1
									comb	1	0D7428	1
					653747	650079	AS8XX	S/steel STICK cutting disc with "S" blades 8x8 mm	curved	1	0D7431	1
									comb	1	0D7429	1
					653748	650080	AS10XX	S/steel STICK cutting disc with "S" blades 10x10 mm	curved	1	0D7431	1
									comb	1	0D7430	1

New

Blades for discs TR 250 - TR260 - TR300

OLD disc code	Knife/plate type	No. OLD knives	OLD spare part code	Set pcs spare part code	NEW disc code	Disc model	Description	Knife/plate type	No. NEW knives	NEW spare part code	Set pcs spare part code
653188	slicing	2	0KJ769	2	653188	C301	SLICING disc 1 mm	curved	2	0KJ769	2
653172	slicing	2	0KJ769	2	653172	C302	SLICING disc 2 mm	curved	2	0KJ769	2
653173	slicing	2	0KJ769	2	653173	C303	SLICING disc 3 mm	curved	2	0KJ769	2
653189	slicing	1	0U0547	2	653189	C305	SLICING disc 5 mm	curved	1	0U0547	2
653190	slicing	1	0KJ769	2	653190	C306	SLICING disc 6 mm	curved	1	0KJ769	2
653191	slicing	1	0KJ769	2	653191	C308	SLICING disc 8 mm	curved	1	0KJ769	2
653192	slicing	1	0KJ769	2	653192	C310	SLICING disc 10 mm	curved	1	0KJ769	2
653193	slicing	1	0KJ769	2	653193	C316	SLICING disc 16 mm	curved	1	0KJ769	2
					653009	D601	Corer SLICING disc 1 mm	curved	2	0KJ769	2
					653227	D602	Corer SLICING disc 2 mm	curved	2	0KJ769	2
					653228	D603	Corer SLICING disc 3 mm	curved	2	0KJ769	2
653217	corrugated	3	0D0360	3	653217	C302	SLICING disc 2 mm for wavy cut	corrugated	3	0D0360	3
653218	corrugated	3	0D0360	3	653218	C303	SLICING disc 3 mm for wavy cut	corrugated	3	0D0360	3
653219	corrugated	1	0D0360	3	653219	C306	SLICING disc 6 mm for wavy cut	corrugated	3	0D0360	3
653174	julienne	1	0D0783		653761	NJ302	S/steel JULIENNE disc 2 mm	julienne	1	0D7437	1
					650150	J302N	S/steel Julienne disc 2 mm, reinforced	julienne	1	0D7834	1
653175	julienne	1	0U0430		653762	NJ303	S/steel Julienne disc 3mm	julienne	1	0D7438	1
					650151	J303N	S/steel Julienne disc 3mm, reinforced	julienne	1	0D7835	1
653194	julienne	1	0U0430		653763	NJ304	S/steel Julienne disc 4mm	julienne	1	0D7439	1
					650152	J304N	S/steel Julienne disc 4mm, reinforced	julienne	1	0D7836	1
653215	julienne	1	0U0550		653764	NJ307	S/steel Julienne disc 7mm	julienne	1	0D7440	1
					650153	J304N	S/steel Julienne disc 7mm, reinforced	julienne	1	0D7837	1
					650157	DJ607N	S/steel Julienne disc for corer 7 mm	julienne	1	0D7837	1
					650155	J307MN	S/steel GRATING disc 7 mm MOZZARELLA	grating	1	0D7837	1
					650156	J309MN	S/steel GRATING disc 9 mm MOZZARELLA	grating	1	0D7838	1
653216	grating	1	0D5411		653759	NP300	S/steel GRATING disc for Parmesan cheese	grating	1	0D7441	1
					650148	P300	S/steel GRATING disc for Parmesan cheese, reinforced	grating	1	0D7839	1
653220	grating	1	0D1919		653760	NK300	S/steel GRATING disc for dumplings	grating	1	0D7442	1
					650149	K300	S/steel GRATING disc for dumplings	grating	1	0D7840	1
653195	curved	3	0KJ726	3	653195	A302	STICK cutting disc 2X2 mm	curved	3	0KJ726	3
	comb	3	0D1528	1				comb	3	0D1528	1
653196	curved	3	0KJ726	3	653196	A303	STICK cutting disc 3X3 mm	curved	3	0KJ726	3
	comb	3	0U0444	1				comb	3	0U0444	1
653197	curved	3	0KJ726	3	653197	A304	STICK cutting disc 4X4 mm	curved	3	0KJ726	3
	comb	3	0KJ758	1				comb	3	0KJ758	1
653198	curved	1	0U0436	1	653198	AF306	STICK cutting disc 6X6mm (chips9	curved	1	0U0436	1
	comb	1	0D1499	1				comb	1	0D1499	1
653199	curved	1	0U0436	1	653199	AF308	STICK cutting disc 8X8mm (chips	curved	1	0U0436	1
	comb	1	0U0450	1				comb	1	0U0450	1
653200	curved	1	0U0436	1	653200	AF310	STICK cutting disc 10X10mm (chips	curved	1	0U0436	1
	comb	1	0U0458	1				comb	1	0U0458	1



When changing blades it is advisable to use threadlock glue

0D7727

LOCTITE 2700 threadlock glue

50ml tube

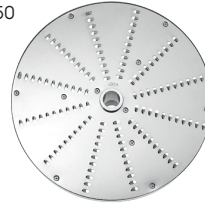
TR260-TR300

Vegetable slicers



Accessories for discs and dicing grids for TR260-TR300

650150



650150

J302N S/steel Julienne disc 2 mm

650151

J303N S/steel Julienne disc 3 mm

650152

J304N S/steel Julienne disc 4 mm

650153

J307N S/steel Julienne disc 7 mm

650155

J307MN

S/steel grating disc 7 mm
For Mozzarella.
Only with cabbage hopper, hood
(only for TR260).



650156

J309MN

S/steel grating disc 9 mm
For Mozzarella.
Only with cabbage hopper, hood
(only for TR260).



650148

650148

P300

S/steel grating disc
For Parmesan cheese



650149

K300

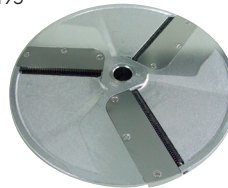
S/steel grating disc
For dumplings

653195

653195

A302

Stick cutting disc 2x2 mm



653196

A303

Stick cutting disc 3x3 mm

653197

A304

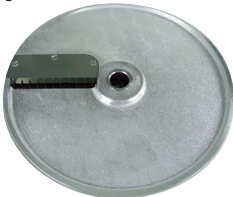
Stick cutting disc 4x4 mm

653198

653198

AF306

Stick cutting disc 6x6 mm



653199

AF308

Stick cutting disc 8x8 mm

653200

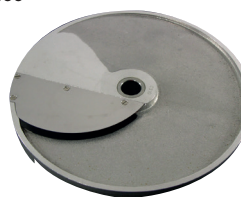
AF310

Stick cutting disc 10x10 mm

653188

653188

C301 Slicing disc 1 mm



653172

C302 Slicing disc 2 mm

653173

C303 Slicing disc 3 mm

653189

C305 Slicing disc 5 mm
Curved knife with knurling
for tomatoes

653190

C306 Slicing disc 6 mm

653191

C308 Slicing disc 8 mm

653192

C310 Slicing disc 10 mm

653193

C316 Slicing disc 16 mm



650157

DJ607N

S/steel Julienne disc
for corer 7 mm
For cabbage hopper, hood
(only for TR260)

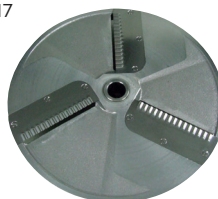
TR260-TR300

Vegetable slicers

653009

**653009****D601****Corer slicer disc 1 mm**For cabbage hopper.
Only for TR260.)**653227****D602****Corer slicer disc 2 mm**For cabbage hopper, hood.
Only for TR260.**653228****D603****Corer slicer disc 3 mm**For cabbage hopper, hood.
Only for TR260.

653217

**653217****C302W Slicing disc 2 mm**

For wavy cut

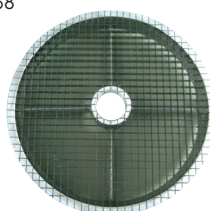
653218**C303W Slicing disc 3 mm**

For wavy cut

653219**C306W Slicing disc 6 mm**

For wavy cut

653068

**653068****M310 Dicing grid 10x10 mm**

For TR300

653499**M312 Dicing grid 12x12 mm**

For TR300

653075**M316 Dicing grid 16x16 mm**

For TR300

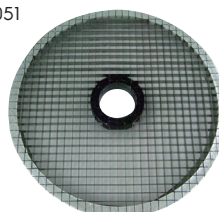
653073**M320 Dicing grid 20x20 mm**

For TR300

653259**M332 Dicing grid 32x32 mm**

For TR300

653051

**653051****MT310 Dicing grid 10x10 mm**

For TR260

653301**MT312 Dicing grid 12x12 mm**

For TR260

653052**MT316 Dicing grid 16x16 mm**

For TR260

653053**MT320 Dicing grid 20x20 mm**

For TR260

653054**MT325 Dicing grid 25x25 mm**

For TR260

653055**MT332 Dicing grid 32x32 mm**

For TR260

653143

**653142****ES300 Universal ejector**

For TR300. Not chips.

653143**EF300 Ejector for chips**

Only for chip cutting blocks

**653017****S/steel mount****with 4 wheels with brake**

H=730 mm. Only for TR260.

**653212****S/steel disc holder**

For discs diam. 300.

For fixing to mount 653017.

Only for TR260.

Multigreen

Combined vegetable slicer-cutter

Accessories for Multigreen



653146
Smooth blade knife group
For Multigreen/K25



653488
2.5 l ABS bowl
For Multigreen cutter mixer



653770
"Fresh cut" hopper
With safety lever



653145
Set of accessories for cutter function:
- 2.5 l ABS bowl
with cover and smooth blade knife group



653047
Set of accessories for cutter function:
- 2.5 l s/steel bowl
with cover and smooth blade knife group



653487
2.5 l s/steel bowl
For Multigreen cutter mixer

653512
Transparent polycarbonate cover for vegetable slicer K25 and Multigreen



TRK45-55-70

Combined vegetable slicer-cutter



Accessories for TRK45-TRK55-TRK70

653581

**653579**

Smooth blade knife group
For cutter mixer TRK45

653581

Smooth blade knife group
For cutter mixer TRK55

653583

Smooth blade knife group
For cutter mixer TRK70

653665

**653614**

Smooth blade knife group
Specific for emulsions.
For cutter mixer TRK45.

653665

Smooth blade knife group
Specific for emulsions.
For cutter mixer TRK55.

653712

Smooth blade knife group
Specific for emulsions.
For cutter mixer TRK70.

650040

**650039**

Microtoothed blade knife group
Specific for emulsions.
For cutter mixer TRK45.

650040

Microtoothed blade knife group
Specific for emulsions.
For cutter mixer TRK55.

650041

Microtoothed blade knife group
Specific for emulsions.
For cutter mixer TRK70.

653582

**653580**

Microtoothed blade knife group
For cutter mixer TRK45

653582

Microtoothed blade knife group
For cutter mixer TRK55

653584

Microtoothed blade knife group
For cutter mixer TRK70

**653772**

Ejector disc TRK45-55-70

653588

**653588**

Cover and bowl scraper
For cutter mixer TRK45

653589

4.5 l s/steel bowl
For cutter mixer TRK45

653591

**653591**

Cover and bowl scraper
For cutter mixer TRK55

653590

5.5 l s/steel bowl
For cutter mixer TRK55

653592

**653592**

Cover and bowl scraper
For cutter mixer TRK70

653593

7 l s/steel bowl
For cutter mixer TRK70

CT6

Manual vegetable slicers



Accessories for CT6/10

653104



653100
6 mm blade block
For cutter-slicer CT6

653099
Guide 6 mm
For cutter-slicer CT6

K25 - 45 - 55 - 70

Cutters



Accessories for K25



653047

Set of accessories for cutter function:

- 2.5 l s/steel bowl,
cover, smooth blade
knife group



653487

2.5 l s/steel bowl
For K25



653512

Transparent polycarbonate cover

For vegetable slicer
K25 and Multigreen



653146

Smooth blade knife group
For K25



650035

Microtoothed blade knife group
For K25/Multigreen

K25 - 45 - 55 - 70

Cutters



Accessories for K45



653579
Smooth blade knife group
For cutter mixer K45



653614
Smooth blade knife group
Specific for emulsions for cutter mixer K45



650039
Microtoothed blade knife group
Specific for emulsions for cutter mixer K45



653580
Microtoothed blade knife group
For cutter mixer K45

653588



653588
Cover and scraper
For cutter mixer K45

653589
4.5 l s/steel bowl
For cutter mixer K45

K25-45-55-70

Cutters



Accessories for K55



653581
Smooth blade knife group
For cutter mixer K55



653665
Smooth blade knife group
Specific for emulsions for cutter
mixer K55



650040
Microtoothed blade knife group
Specific for emulsions for cutter
mixer K55



653582
Microtoothed blade knife group
For cutter mixer K55

653591



653591
Cover and bowl scraper
For cutter mixer K55

653590
5.5 l s/steel bowl
For cutter mixer K55

K25 - 45 - 55 - 70

Cutters



Accessories for K70



653583
Smooth blade knife group
For cutter mixer K70



653712
Smooth blade knife group
Specific for emulsions for cutter mixer K70



650041
Microtoothed blade knife group
Specific for emulsions for cutter mixer K70



653584
Microtoothed blade knife group
For cutter mixer K70

653592



653592
Cover and bowl scraper
For cutter mixer K70

653593
7 l s/steel bowl
For cutter mixer K70

K120/KE120 – K120S/KE120S

Cutters



**Accessories for
K120-KE120-K120S
KE120S**



653179
Smooth blade knife group
For cutter mixer 11.5 l



653299
Knurled knife group
For cutter mixer 11.5 l



650073
11.5 l s/steel bowl
For cutter mixer K120S-KE120S



653017
**S/steel mount with 4 wheels
with brake**
H=730 mm

K180/KE180 – K180S/KE180S

Cutters



**Accessories for
K180-KE180
K180S-KE180S**



653119
Smooth blade knife group
For cutter mixer 17.5 l



653120
Knurled knife group
For cutter mixer 17.5 l



650074
17.5 l s/steel bowl
For cutter mixer K180S-KE180S



650046
**Scraper for cutter mixer K180S
and KE180S**



653017
**S/steel mount with 4 wheels with
brake**
H=730 mm

Speedy mixer – B3000

Hand mixers



Accessories for Bermixer B3000 bayonet connection

650134



650132
S/steel tube
with blades
353 mm per B3000 bayonet
connection

650133
S/steel tube
with blades
453 mm per B3000 bayonet
connection

650134
S/steel tube
with blades
553 mm per B3000 bayonet
connection

650135
S/steel tube
with blades
653 mm per B3000 bayonet
connection

653578
Reinforced s/steel whisk
For hand mixer B3000 bayonet
connection



653294
Mount for hand mixer B3000
To be used together with rail code
653292



653292
**Adjustable rails for containers/
pots**
Diam. from 375 to 650 mm.
To be used together
with mount code 653294.



Accessories & Consumables

Detergents

Index

Dishwashing detergents.....	60
Oven detergents	61
Cooking plates detergents	62

Dishwashing detergents



C11 Detergent for dishwashers

- Ideal for all types of crockery: ceramic, porcelain, glass, crystal and metal
- It is very functional for removing caffeine and theine deposits from cups and teapots
- Its delicate aroma helps minimize the unpleasant odor, which can sometimes be found in dishwashers
- Highly recommended for restaurants preparing fish and sea food
- Particularly suitable for hard and medium hard water

Code	Package	Compatible with
OS2092	one pack of 2 cans of 5lt.	glasswasher, undercounter, front loading, hood type, rack type



C13 Eco detergent for dishwashers

- Ideal for all type of crockery: ceramic, porcelain, glass, crystal and metals
- It's special "Eco-Formula" free of phosphates, EDTA and NTA makes the product ecologically friendly with a very low environmental impact
- Very efficient in case of dried food residues on all kind of dishes
- Particularly suitable for soft water and recommended for dishwashing systems with osmosis or demineralisers

Code	Package	Compatible with
OS2093	one pack of 2 cans of 5lt.	glasswasher, undercounter, front loading, hood type, rack type



C12 Rinse aid for dishwashers

- Brightener additive for crockery rinsing in the dishwasher
- Guarantees sparkling clean and dry crockery
- Use of vegetable origin surfactants
- Ideal for ceramics, porcelain, glass and crystal
- Specific formula for hard water and medium hard waters

Code	Package	Compatible with
OS2094	one pack of 2 cans of 5lt.	glasswasher, undercounter, front loading, hood type, rack type



C14 Rinse aid Plus for dishwashers

- Rinse additive for crockery rinsing in the dishwashers
- Super concentrated formula recommended for soft water conditions
- Offers a perfect drying without stains or any water trace, therefore highly recommended for glasses
- Use of vegetable origin surfactants
- Ideal for dishes in glass, crystal, ceramics, porcelain

Code	Package	Compatible with
OS2095	one pack of 2 cans of 5lt.	glasswasher, undercounter, front loading, hood type, rack type

Oven detergents



C20 Extra Strong Detergent for ovens

- ▶ Detergent for ovens with automatic washing system
- ▶ Tested and validated by Electrolux Labs for best appliance performance, compatibility and durability
- ▶ High degreasing power for ovens with integrated washing cycle
- ▶ Environmental friendly chemical formula - EDTA free

Code	Package	Compatible with
OS2282	one pack of 2 cans of 5 lt.	ovens with automatic cleaning system



C21 Extra Strong Rinse aid for ovens

- ▶ Rinse aid for ovens with automatic washing system
- ▶ Intensively tested and validated by Electrolux Labs for best appliance performance, compatibility and durability
- ▶ Quick dry and perfect shine for ovens with integrated washing cycle
- ▶ Environmental friendly Eco product by use of vegetable origin surfactants

Code	Package	Compatible with
OS2283	one pack of 2 cans of 5 lt.	ovens with automatic cleaning system

Cooking plates detergents



C40 Degreaser for hot surfaces

- Suitable for cleaning plates and grids with high temperature surfaces (max 347°F / 175°C)
- Practical nozzle and spraying unit included

Code	Package
0S1841	1 pack of six 1lt. bottles



C41 RAPID GREASE for SpeedDelight

- for cleaning of SpeedDelight hot plates (max 347°F / 175°C)
- Practical nozzle and spraying unit included
- Sprayer 0S2331 included

Code	Package
0S2292	1 pack of six 1lt. bottles



Experience the Excellence
professional.electroluxusa.com

Follow us on:



ElectroluxPro



ElectroluxPro



ElectroluxProfessional

Excellence with particular attention to the environment

- ▶ All Electrolux Professional plants are ISO 14001 certified.
- ▶ All Electrolux Professional solutions are designed to consume the minimum in terms of water, energy and detergents, with low emissions into the environment.
- ▶ In recent years more than 70% of Electrolux Professional solutions have been renewed and designed keeping in mind the customer's needs, and with particular attention to the environment.
- ▶ All Electrolux Professional solutions comply with ROHS and REACH and are over 95% recyclable.
- ▶ All Electrolux Professional solutions are 100% quality tested and all the functions are individually checked by expert technicians.

