

# Payment Systems

Electrolux offers a wide range of payment systems, from payment at the machine with coin or token to the possibility of connecting the machines to central payment systems. Whatever your needs are, we have a solution for you.

## Application

For Front Loaded Washers and Tumble Dryers

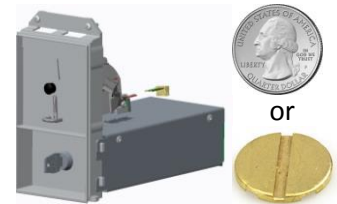
## Kits and PNCs

Payment systems are available as kits with coin meters only, coin boxes only or complete kits with coin meter and coin box. Your sales representative will be pleased to assist you in defining the right solution for your needs.

## Individual payment solution for each machine

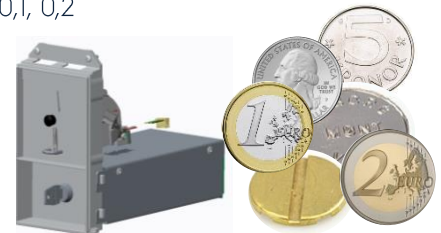
### Electromechanical Coin meter

- For when one coin value only or one token value only is used
- Can be configured for local currency coins and 14 different sizes of token.
- Limited flexibility: can handle only one type of coin or token.
- Security: Anti-theft design



### Electronic Coin meter

- For when several values of coins and/or tokens are required (ex. EUR 0,1, 0,2 0,5, 1, 2)
- Flexibility: can handle several types of coins and currencies (ex. EUR, GBP JPY, WON, NZD, AUD, EUR, DKK, NOK, SEK, HKD, TWD, MOP, MYR, SGD, CHF, CZK, LTL and several different tokens)
- Up to 16 different coins values and/or tokens can be accepted at once
- Can combine both, coins and tokens
- Can easily be switched to another currency locally
- Security: Anti-theft design and tampering proof with integrated thread blocking device.
- Intelligence: Possibility to locally set the coin meter to accept other currencies than the one it has been programmed for, ex. if customers have their own existing tokens.
- Flexibility of use: Selection if overpayment should be possible (accept payment values higher than the washing/drying price but not give change back) or not possible (blocking to high values, only accepting exact change).



## Tokens

Tokens offer flexibility and ease of use: they can be handed out for free, the risk of burglary is low, customers can choose/vary the price for a token depending on the applications and they can combine tokens with other applications ex. in camping sites or apartment house laundries. Use of tokens is also beneficial in international environments such as hotels where guests do not necessarily have coins in the local currency.

Electrolux offers a wide selection of tokens to meet the needs of diversity. There are 14 different tokens available with variations in marking, color, diameter and thickness.

When selecting token, please consider the following:

- Select a token which differs most from your local currency
- Select a token which differs from other token operated launderettes in the neighborhood
- Select a token which differs from other nearby vending machines

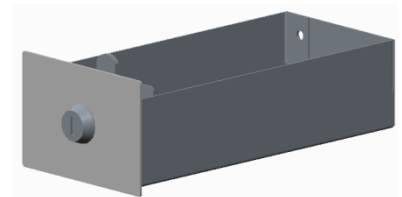
Tokens can be purchased by unit or by batches up to 100 pieces per bag



## Coin boxes

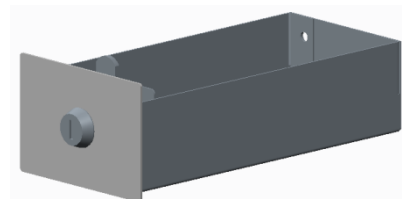
### Coin box (170x88x51)

- Brand: Electrolux
- Follow standard measurements: (170x88x51mm)
- Capacity: 350 coins (of the size of 0,25 USD, diameter = 24,26mm)
- Individual key for each box – security against theft
- Material: Galvanized, Painted steel, designed in line with the rest of the machine panel (same grey color)



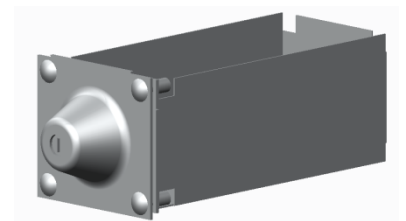
### Coin box (170x88x51) – Lower front plate for dryers

- Brand: Electrolux
- Follow standard measurements: (170x88x51mm)
- Capacity: 350 coins (of the size of 0,25 USD, diameter = 24,26mm)
- Individual key for each box – security against theft
- Material: Galvanized, Painted steel, designed in line with the rest of the machine panel (same grey color)



**Coin box (185x89x81)**

- Brand: Greenwald UG800B
- Follow standard measurements: 7,3x3,5x3,2" (185x89x81mm)
- Capacity: 600 coins (of the size of 0,25 USD, diameter = 24,26mm)
- Individual key for each box – safety reasons
- Reinforced lock system, more robust.
- Material: Galvanized Steel

**Coin box (203x95x64)**

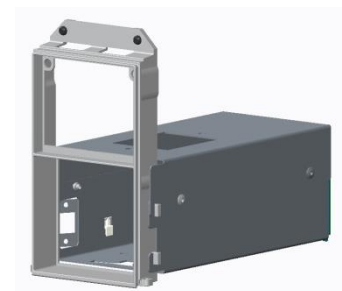
- Brand: Monarch JBX
- Follow standard measurements: 8,3x3,75x2,5" (203x95x64mm)
- Capacity: 550 coins (of the size of 0,25 USD, diameter = 24,26mm)
- Individual key for each box – safety reasons
- Reinforced lock system, more robust.
- Material: Galvanized Steel

**Housing for Coin meter / Coin box****Housing for Coin meter / Housing for Coin box****Housing for coin meter**

- Coin meter is purchased separately and assembled locally
- Can be combined with coin box

**Housing for coin box**

- Coin box is purchased separately and assembled locally
- Standard dimensions for box: 89x81mm
- Length is 170mm. Also fit systems with a shorter length.
- Housing is suitable for ex, Greenwald, Monarch, EDS
- Can be combined with coin meter



## Connection of Card Readers

Electrolux washers and dryers are prepared to receive card systems or similar (Exception W555H, T5130). We offer a range of kits with power supply, screw terminals and price programming buttons to make connection and operation easier for customers.

### Housing for Card Reader

- Plate with hole for card reader, PCB and cables for connection of card reader
- For customers who want to install payment systems with Card, Keys etc, - Convenient as, easy to mount on machines with a nice aesthetics of the machine.
- If the hole in the plate is too small/too big for a specific card reader, it is easy to locally replace the plate with a suitable one.



### Additional kits for easy connection of card readers

- Card Reader kit (including frame, cover plate, bracket, pcb and cable)
- Frame and cover plate for card reader
- Cover plate for card reader
- Cover plate for coin box housing
- Bracket for printed circuit board
- Printed circuit board with fuses for connection of card reader to line voltage
- Printed circuit board and cables for connection of card reader to Compass Pro or Compass Control

### Adapter Plate for dual payment

- For customers who want payment with both built-in coin meter and card reader
- Adapter plate with one hole as well as prepunched holes for main suppliers (Spyderwash, ESD, etc)
- Allows a broader choice of payment, more revenue for the owner
- Nice aesthetics, avoid that customers drill holes in the machine themselves, which can cause quality issues on the machine
- More convenience for customers
- Simple and safe to install



## Other Payment Solutions

Upon demand, Electrolux washers and dryers are prepared for connection of payment systems from payment systems manufacturers.

Our equipment is compatible with the vast majority of payment systems available today globally. Please contact your local sales representative for more information.

## Stop Button and Key Switch

- Frame and cover plate with stop button
- Frame and cover plate with key switch

