

Electrolux Professional  
Marine Laundry



# One expert in every harbour

Unique laundry solutions  
for every need within Marine



Electrolux





---

.....

**'This machine, which is Electrolux, for me is good... environmentally and for my health especially (because I don't have to inhale the fumes of chemicals). Electrolux feels easier to use. lagoon<sup>®</sup> machines are better than the traditional ones because it does not take long to learn.'**

.....

**Earl Gutierrez**

Laundry Master

Saga Sapphire passenger ship

# Highest productivity per square meter and more robust

With customisable programs for any fabric or degree of soilage, you can determine washing and drying standards for your individual workwear needs. Remove tough stains while preserving important protective features or use the eco-friendly delicate cleaning for your uniforms or guests' delicates. Everything onboard and easy to use – from workwear and mops to delicate garments.

All kind of ships need to rely on their laundry equipment working at sea with cost efficient processes, easy maintenance and flexible programs.



## Electrolux Excellence

Excellence is central to everything we do. By anticipating our customers' needs, we strive for Excellence with our people, innovations, solutions and services. Thus making our customers' work and life easier and more profitable.



### Superior efficiency and economy

Up to 50 % cost savings thanks to Automatic Saving System and Efficient Dosing System



### Highest flexibility

Best-in-class wash results with fast and customised programs



### Maximum durability

High reliability and extra-long lifetime with heavy-duty construction



### Global service network

for prompt, expert advice worldwide.  
– 1,900 authorised service centres  
– Over 7,000 expert technicians





# Meet our solutions on seven seas and our service in millions of ports

A whole range of merchant ships, oil rigs/platforms, and passenger ships are taking advantage of Electrolux expertise in marine laundry solutions. For more detailed information around your marine solution please contact your Electrolux Professional expert.

## Tailor-made solutions

Whatever your business requires, we design the most innovative and efficient solutions to fit the needs of any marine laundry. With innovative planning tools, our laundry experts will simulate any kind of configuration and provide you with a virtual reality draft.

## Consultative approach

We are your partner throughout the entire process.



## Unique Service Excellence Always near Always there for you

- ▶ 1,900 authorised service centres
- ▶ Over 7,000 expert technicians
- ▶ 44,000 available spare parts in stock
- ▶ 24 - 48 hr spare parts delivery worldwide

Scan the QR code  
to enter the most  
extensive service  
network.



# Excellent solutions tailored to your needs



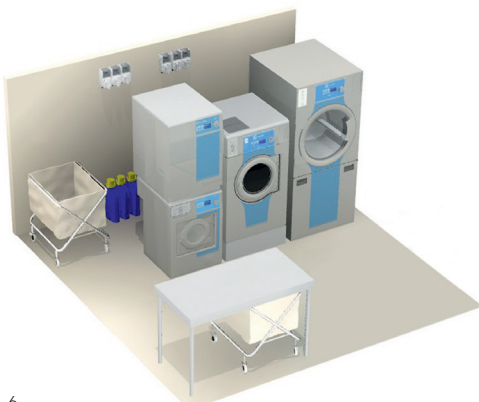
## 1 Cargo Ship Laundry **Adding lifetime to your workwear**

Give heavily soiled workwear the most thorough clean possible to remove oil, grease and finest dust while preserving the quality.

- ▶ Highest quality output and protection level thanks to total program flexibility and optimised processes
- ▶ Maximum efficiency and problem-free operations with durable machines and unique technologies for increased life time
- ▶ Cost savings thanks to smart technology for optimised water, energy and detergent consumption

### **Cargo ship – 25 staff**

**Machine set-up** W555H & T5130, W5130N & T5250



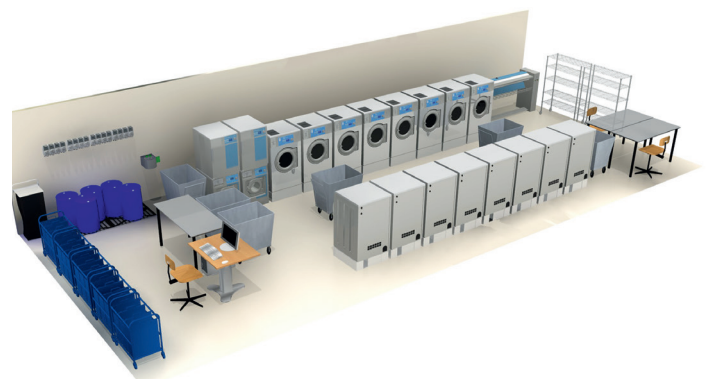
## 2 Oil-Rig Laundry **The highest performance on clothes cleaned to perfection**

If you are looking for laundry equipment that is designed for workers on oil platforms, you will need robust machines with long lifespan and safety features to guarantee the health of the workers.

- ▶ High productivity and trouble-free operation due to intelligent and user-friendly technologies and robust construction
- ▶ Faster maintenance thanks to best ergonomic construction and easy-to-clean lint screen

### **Oil-Rigs – 300 crew members**

**Machine set-up** 8 x W5105N & T5190, 2 x W555H & T5130, IB43316





**lagoon®**  
Wet Cleaning by Electrolux



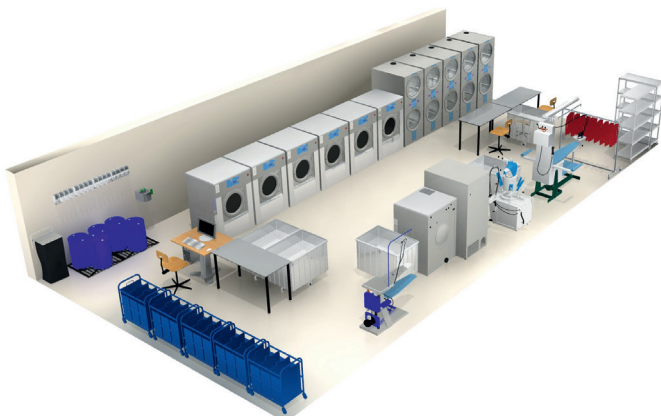
### 3 Passenger Ship Laundry **Best quality and cost control** for interior textiles, uniforms and valet laundry

Do you have large amounts of different types of laundry to wash every day? Then a passenger ship laundry is bound to be worth your while, less dangerous and complicated than dry cleaning.

- ▶ Lowest cost per wash and the best quality results
- ▶ Return on investment within a few months – including finance and maintenance costs
- ▶ Less textile replacement thanks to gentler laundry processes
- ▶ Perfect finishing of bed and table linen, terry towelling, guests' clothes, uniforms and workwear e.g.

#### Passenger ship – 1,000 passengers

**Machine set-up** lagoon® Advanced Care set for valet laundry W4180H & T5350 and Finishing equipment plus 6 x W5240H, 5 x T5300S for the main laundry



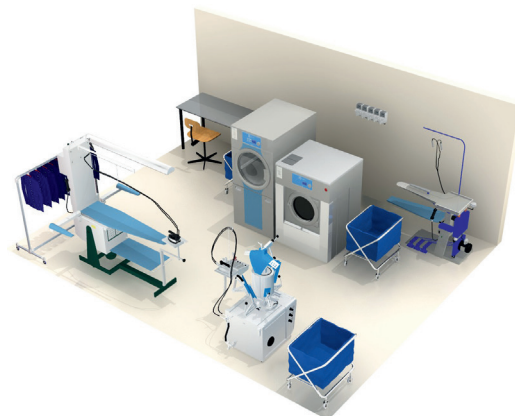
### 4 lagoon® Wet-cleaning **Wash greener, more gently** and improve your service

lagoon® Advanced Care, the solvent-free process that's delicate on fabrics and gentle on the environment. Your customers will see, feel and smell the difference. Your staff will love the safe and easy processes.

- ▶ **Sustainable** Environmentally friendly with no toxic chemicals used in processes, as water is the solvent
- ▶ **Delicate on the delicates** Outstanding results with your guests most precious textiles and fine wool labelled 'dry clean only' garments
- ▶ **A real game changer** Easy wet cleaning with no hard-to-learn procedure and no bottlenecks
- ▶ **The best cleaning performance** Fast effective cleaning lets you offer customers an express delivery service. Take care of your staff' uniforms at the same time

#### lagoon® Wet-cleaning – 1,000 passengers

**Machine set-up** W4180H lagoon® & T5350 lagoon® plus FIT1WC lagoon® Ironing Table, FFTWC Former and FSU3 Spotting Table



## Excellence for your Marine Laundry

### Intelligent features and unique extras



#### Best utility cost optimisation thanks to Compass Pro®

- Flexible and customisable
- Up to 55 programs available of which 15 programmable
- Available on Washers and Dryers



#### Best-in-class wash results

- with unique programs and special designed machine
- Optimised drum holes for easy rinsing/dirt drainage
- Special programs for highest hygiene levels



#### Cost savings in water/energy due to Automatic Saving System

- Up to 50 % water savings for half loads
- Energy savings due to less water to heat



#### Wet-cleaning Excellence

- due to lagoon® Advanced Care
- Makes it possible to operate wet-cleaning with the same process time, productivity and seamless handling of dry cleaning



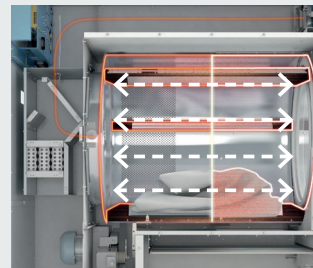
#### Faster wash cycle

- with drum Speed Soak
- Speeds up soaking process
- More hygienic with faster drainage of particles



#### Superior efficiency/economy

- with Efficient Dosing System
- Up to 20 % savings in running costs
- Best quality results/skin care
- No overdosing



#### Best drying results

- No over-drying due to Residual Moisture Control
- Measures the exact moisture content throughout the whole process
- Energy savings thanks to shorter drying time



#### Most kg washed and dried/m²

- Smallest footprint on the market
- Up to 40 % smaller in comparison to competitor machines



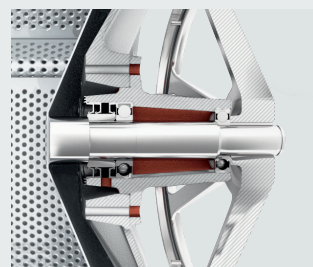
#### Maximum convenience and ultimate time savings

- with Wash&Dry technology
- Three in one – washing, drying, washing & drying
- Washed and dried to perfection without reloading



#### Time savings in finishing

- as a result of Reversing Drum Action
- Prevents tangling and reduces creasing of large items



#### Extra-long lifetime

- Heavy-duty bearings with 3 sealing lips and seal drain preventing fluids from reaching the bearings



#### Total cost control

- thanks to Certus Management™ Information System
  - Boosts savings/profitability
  - Enables process validation
- Innovative software from Electrolux**



## Supplements, accessories and consumables for total solutions



### **lagoon® Sensitive Detergent** for Wool & Silk

- For use in professional wet cleaning, with the appropriate Electrolux lagoon® Wet-cleaning programs and together with lagoon® Sensitive Conditioner



### **lagoon® Sensitive Conditioner** for Wool & Silk

- For use in professional wet cleaning, with the appropriate Electrolux lagoon® Wet-cleaning programs and together with lagoon® Sensitive Detergent



### **lagoon® Delicate 2 in 1** for Mixed Fibres

- Detergent for use in professional wet cleaning, with the appropriate Electrolux lagoon® Wet-cleaning programs



### **Cleanstar Detergents** for clean and green wash results



### **Laundry Trolley** for easy laundry handling



### **Rolltainer** for easy laundry handling



### **Stainless Steel Trolley** for easy laundry handling



### **Stainless Steel Working Table** for optimum hygiene

## Finishing equipment that meets your business Excellence



### **Tables**

**FIT2B**  
Vacuum Ironing Table with integrated automatic boiler



### **Tables**

**FIT1-WC**  
Vacuum / Blowing Table (left ended) without boiler



### **Finisher**

**FSF2**  
Blowing Shirt Finisher  
**FSF3**  
Pressing Shirt Finisher



### **Presses**

**FPA1-WC**  
Automatic Laundry Press with universal shape

## Range overview

### Choose the solution that suits you best

**For Cargo- and Passenger ships / Oil rigs**  
**H** High spin range



Washer Extractors Soft Mount*	W555H	W565H	W575H	W5105H	W5130H	W5180H	W5240H	W5300H	W4400H	W4600H	W4850H	W41100H
Drum volume, l	53	65	75	105	130	180	240	300	400	600	850	1100
Dry weight capacity, kg/lb	6/13	7/15	8/18	11/25	14/30	20/45	27/60	33/75	45/100	65/145	90/200	120/350
G-factor	530	450	450	450	450	450	450	400	350	350	350	300
Width, mm	595	720	720	830	910	970	1020	1020	1325	1390	1640	1640
Depth, mm	681	721	721	757	821	947	990	1134	1450	1585	1635	1850
Height, mm	832	1132	1132	1212	1340	1426	1462	1462	1975	1975	2190	2190
Electric/Steam/Non-heated	x/-/x	x/x/x	x/x/x	x/x/x	x/x/x	x/x/x	x/x/x	x/x/x	x/x/x	x/x/-	-/x/x	-/x/x

**For Cargo- and Passenger ships / Oil rigs / Platforms**  
**N / S** Normal / Super spin range



Washer Extractors Solid Mount*	W575N/S	W585N/S	W5105N/S	W5130N/S	W5180N/S	W5250N/S	W5330N/S
Drum volume, l	75	85	105	130	180	250	330
Dry weight capacity, kg/lb	8/18	9/20	11/25	14/30	20/45	28/62	35/75
G-factor	100/200	100/200	100/200	100/200	100/200	100/200	100/200
Width, mm	660	660	720	720	750	830	910
Depth, mm	681	722	697	787	914	1029	1114
Height, mm	1131	1133	1217	1216	1345	1426	1465
Electric/Steam/Non-heated	x/x/x	x/x/x	x/x/x	x/x/x	x/x/x	x/x/x	x/x/x

**For small productivity units**  
**myPRO** Smartprofessional solutions



myPRO Washer / Dryer	WE170P/V	TE1120
Drum volume, l	67	120
Dry weight capacity, kg/lb	8/18	8/18
G-factor	536	
Width, mm	597	596
Depth, mm	624	625
Height, mm	850	850

\* Front and side panel in stainless steel as option.  
 More information on product data sheet.



**Soft Mount machines** Direct installation on all type of floors  
**Solid Mount machines** Need to be fixed to the floor

● standard ○ option  
x available - not available

### For Cargo- and Passenger ships / Oil rigs / Platforms



Tumble Dryer*	T5130	T5190	T5190LE	T5250	T5290	T5350	T5550	T5675	T4900	T41200
Drum volume, l	130	190	190	250	290	350	550	675	900	1200
Dry weight capacity, kg/lb	6/13	10.6/23	10.6/23	13.9/30.7	16.1/35.5	19.4/42.8	30.5/67.2	37.5/82.7	50/110	66.7/147
Width, mm	597	721	722	790	713	790	961	961	1290	1290
Depth, mm	723	778	777	958	1210	1177	1365	1560	1295	1485
Height, mm	839	1114	1685	1770	1688	1770	1869	1857	2465	2465
Electric/Gas/Steam	●/-/-	●/-/-	●/-/-	x/x/x	x/x/x	x/x/x	x/x/x	x/x/x	x/x/x	x/x/x

### For Cargo- and Passenger ships / Oil rigs Smart solutions all in 1 for limited space



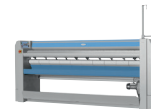
Wash & Dry	WD5130	WD5240
Drum volume, l	130	240
Dry weight capacity, kg/lb	8/18	15/33
G-factor	350	350
Electric/Electric	●	●
Width, mm	910	1020
Depth, mm	1110	1350
Height, mm	1330	1450
Electric//Gas	○	○
Non-heated/Gas or Electric	○	○

### For Cargo- and Passenger ships / Oil rigs Special drying solutions



Drying Cabinets	FC48	TS560	TS5121
Garments/h	70		
Capacity, kg		4	8
Width, mm	870	600	1200
Depth, mm	1300	625	580
Height, mm	1975	1915	1820
Electric/Gas/Steam	x/x/x	●/-/-	●/-/-

### For Cargo- and Passenger ships / Oil rigs



Ironer	IC43316	IC43320	IC44819
Roll diameter, mm/in	325/13	325/13	479/19
Ironing width, mm/in	1650/65	2065/81	1910/75
Width, mm	2030	2445	2575
Depth, mm	690	690	1070
Height, mm	1145	1145	1270
Electric/Gas/Steam	x/-/x	x/-/x	x/x/x

\* Front and side panel in stainless steel as option.  
More information on product data sheet.



Discover the Electrolux Excellence  
and share more of our thinking at  
[www.professional.electrolux.com](http://www.professional.electrolux.com)

Follow us on



## Excellence with the environment in mind

- ▶ All our factories are ISO 14001-certified
- ▶ All our solutions are designed for low consumption of water, energy, detergents and harmful emissions
- ▶ In recent years over 70% of our product features have been updated with the environmental needs of our customers in mind
- ▶ Our technology is ROHS and REACH compliant and over 95% recyclable
- ▶ Our products are 100% quality tested by experts

